



**Green Dragon Road,  
Winterbourne, BS36 1HF**

**PRICE: Offers In  
Excess Of £350,000**



## Property Features

- End Of Terrace Home
- Three Bedrooms
- Two Reception Rooms
- 17' Kitchen
- Utility Room With Shower
- Gas Central Heating
- Garage
- Front & Rear Gardens
- No Onward Chain
- Close to Local Shops and Schools

## Full Description

Located in Green Dragon Road in Winterbourne, this end-terrace house with a generous garden, boasts three well-proportioned bedrooms, making it an ideal home for families.

Upon entering, you will find two separate reception rooms that provide ample space for those who need a home with areas with versatility. The extended ground floor enhances the property further providing separate utility room with shower.

The property also features a garage, offering additional storage or parking options, which is a valuable asset.

Located in the friendly community of Winterbourne, you will enjoy easy access to local amenities, schools, and parks, making it a wonderful place to be. This property presents an excellent opportunity for those looking to settle in a welcoming neighbourhood while enjoying the comforts of a well-designed home. Don't miss the chance to make this lovely house your own.

### Entrance Porch

Entrance Via obscure UPVC double glazed doors to entrance porch, wooden door with glass inset and matching side panels to

### Entrance Hall

Stairs to first floor accommodation, laminate flooring, double radiator, under stairs cupboard, cupboard housing consumer unit, doors to all ground floor accommodation.

### Dining Room

13'5 x 11'11 (4.09m x 3.63m)

UPVC double glazed window to front aspect, laminate flooring, double radiator.

### Living Room

13'1 x 11'8 (3.99m x 3.56m)

UPVC double glazed window to rear aspect, double radiator.





**Kitchen**  
17'9 x 7'10 (5.41m x 2.39m)  
UPVC double glazed windows to side aspect, part glazed door to rear garden, access to loft space, range of fitted wall and base units with laminate work surfaces over, stainless steel sink unit with mixer tap, plumbing for dishwasher, integral oven and hob with cooker hood over, cupboard housing Worcester central heating boiler, door to

**Utility/Shower Room**  
Obscure UPVC double glazed window to rear aspect, plumbing for washing machine, walk in shower cubicle, low level w.c., part tiled walls, extractor fan.

**Landing**  
Obscure UPVC double glazed window to side aspect, access to loft space., doors to all first floor accommodation.

**Bedroom One**  
13'1 x 12'1 (3.99m x 3.68m)  
UPVC double glazed window to the rear, radiator, textured ceiling, built in wardrobe.

**Bedroom Two**  
12'1 x 11'11 (3.68m x 3.63m)  
UPVC double glazed window to the front, radiator, textured ceiling.

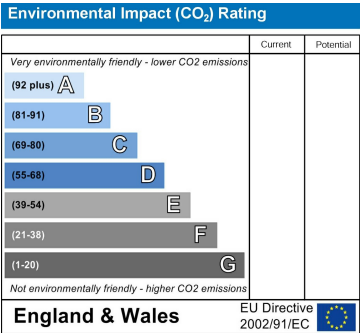
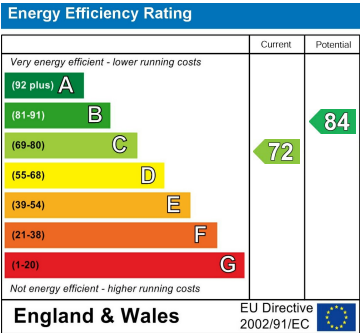
**Bedroom Three**  
12'1 x 11'11 (3.68m x 3.63m)  
UPVC double glazed window to the front, textured ceiling, radiator.

**Bathroom**  
UPVC double glazed window to the rear, panelled bath with shower over, pedestal wash hand basin, low level w.c., radiator, textured ceiling, part tiled walls.

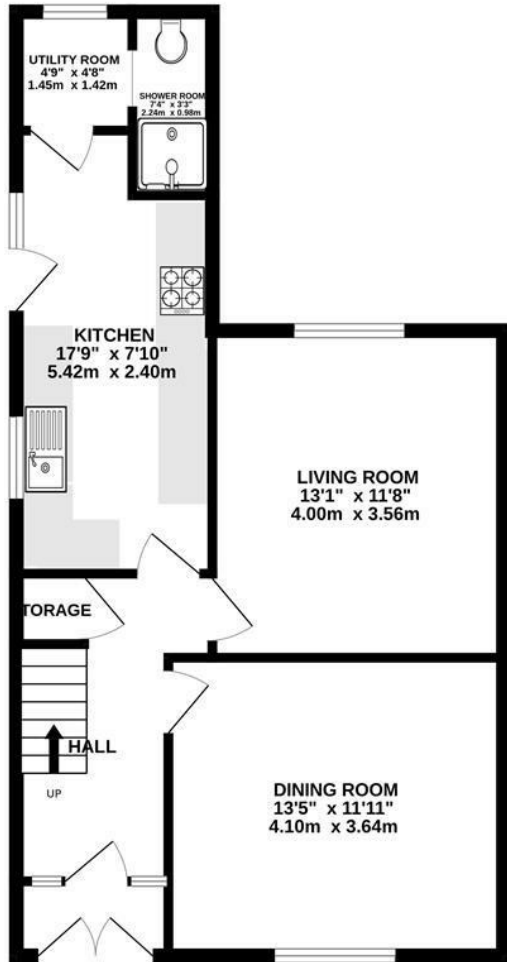
**Rear Garden**  
Enclosed by fencing, mainly laid to lawn, decked seating area, gravelled area, side access gate, tap, lighting, hardstanding with two sheds.

**Garage**  
With up and over door.

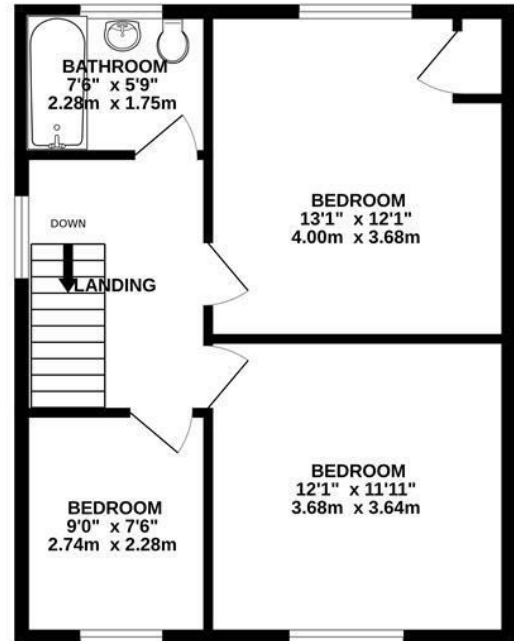
**Front**  
Lawned with path leading to front door, planted area, side access.



GROUND FLOOR  
591 sq.ft. (54.9 sq.m.) approx.



1ST FLOOR  
490 sq.ft. (45.5 sq.m.) approx.



TOTAL FLOOR AREA : 1081 sq.ft. (100.4 sq.m.) approx.

Whilst every attempt has been made to ensure the accuracy of the floorplan contained here, measurements of doors, windows, rooms and any other items are approximate and no responsibility is taken for any error, omission or mis-statement. This plan is for illustrative purposes only and should be used as such by any prospective purchaser. The services, systems and appliances shown have not been tested and no guarantee as to their operability or efficiency can be given.  
Made with Metropix ©2025

4 Flaxpits Lane  
Winterbourne  
Bristol  
BS36 1JX

[www.aj-homes.co.uk](http://www.aj-homes.co.uk)  
[info@aj-homes.co.uk](mailto:info@aj-homes.co.uk)  
01454 252140

Agents Note: Whilst every care has been taken to prepare these sales particulars, they are for guidance purposes only. All measurements are approximate are for general guidance purposes only and whilst every care has been taken to ensure their accuracy, they should not be relied upon and potential buyers are advised to recheck the measurements