

Hay Leaze
Bristol BS37 7YJ

Price:
£875 PCM

Property Features

- Second Floor Flat
- One Bedroom
- Popular Location
- Unfurnished
- 10th August 2025
- MUST BE VIEWED

Full Description

Communal Entrance Hall

Second Floor Landing

Entrance Hall

Living Room

14'1" x 10'5"

Kitchen/Breakfast Room

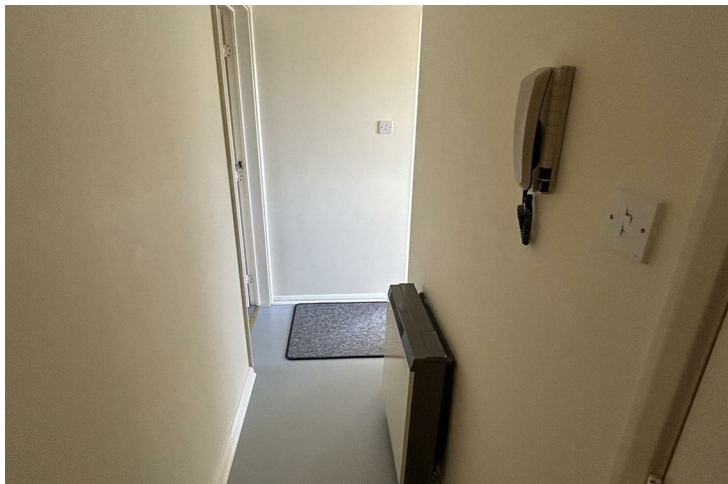
13'5" x 9'2"

Bedroom

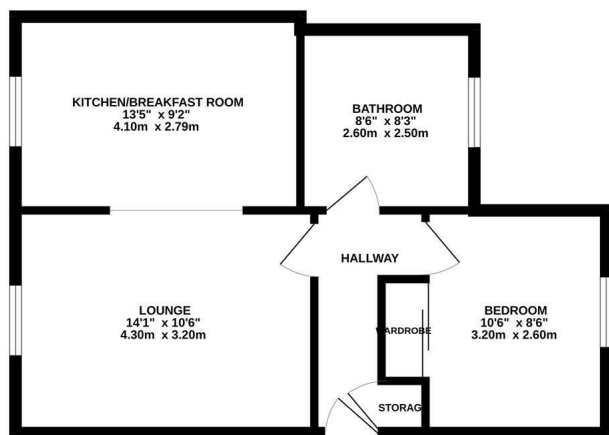
10'5" x 8'6"

Bathroom

Off Street Parking Space



GROUND FLOOR



Measurements are approximate. Not to scale. Illustrative purposes only.
Based on Mortgage L2023

4 Flaxpits Lane
Winterbourne
Bristol
BS36 1JX

www.aj-homes.co.uk
info@aj-homes.co.uk
01454 252140

Agents Note: Whilst every care has been taken to prepare these sales particulars, they are for guidance purposes only. All measurements are approximate are for general guidance purposes only and whilst every care has been taken to ensure their accuracy, they should not be relied upon and potential buyers are advised to recheck the measurements