



Alexander Road
Bristol BS16 1UZ

Price:
£2,000 PCM

Property Features

- Popular Development
- Redrow Charlecote 4 Bed Semi-Detached Town House
- Popular Location
- 4 Good Sized Bedrooms, Master En-suite
- Kitchen / Diner with Built in Fridge / Freezer, Dishwasher, Double Electric Oven, Gas Hob
- Garden, Garage & Parking
- Available July 2025



Full Description

LOUNGE
16'8" x 11'1"
French doors to rear garden, radiator

KITCHEN/DINER
16'7" x 9'7"
Kitchen with built in fridge freezer, electric double oven, gas hob, dishwasher. Dining area, radiator.

DOWNSTAIRS CLOAKROOM

UTILITY CUPBOARD
Space and plumbing for a washing machine

BEDROOM 2
13'4" x 8'10"
Built in wardrobes, radiator

BEDROOM 3
12'4" x 9'0"
Radiator

BEDROOM 4
9'10" x 7'7"
Radiator

BEDROOM 1
12'3" x 11'2"
Built in wardrobes, radiator

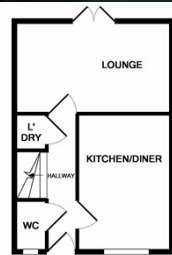
ENSUITE SHOWER ROOM
Shower, WC and basin

STORAGE CUPBOARD

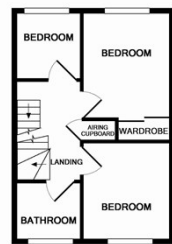
FAMILY BATHROOM
Fitted with bath with shower over, WC and basin

GARAGE

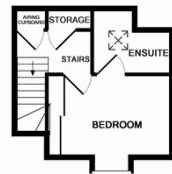
REAR GARDEN



GROUND FLOOR



1ST FLOOR



2ND FLOOR

Measurements are approximate. Not to scale. Illustrative purposes only.
Made with Memento 62019

Agents Note: Whilst every care has been taken to prepare these sales particulars, they are for guidance purposes only. All measurements are approximate are for general guidance purposes only and whilst every care has been taken to ensure their accuracy, they should not be relied upon and potential buyers are advised to recheck the measurements

4 Flaxpits Lane
Winterbourne
Bristol
BS36 1JX

www.aj-homes.co.uk
info@aj-homes.co.uk
01454 252140