



Pye Croft
Bradley Stoke BS32 0EB

Price:
£261,500

Property Features

- Two bedrooms
- Terraced Home
- Gas central heating
- Double Glazing
- No Onward Chain
- Garden and Parking



Full Description

Hallway

UPVC door to hallway with tiled floor, door to inner hall with laminate floor, door to radiator and stairs rising to 1st floor landing.

Living Room

Double glazed window to front, laminate flooring, radiator and door to.

Kitchen/Diner

Double glazed window and double glazed UPVC door to rear garden. A arrange of wall and base units with work surface over, tiled splashback, stainless steel sink with mixer tap, space for washing machine space and space for fridge freezer. Oven with hob and extractor fan.

Landing

Access to loft, storage cupboard and doors to;

Bedroom 1

Double glazed window to front, radiator, wall mounted boiler.

Bedroom 2

Two double glazed windows to rear, radiator and laminate flooring.

Bathroom

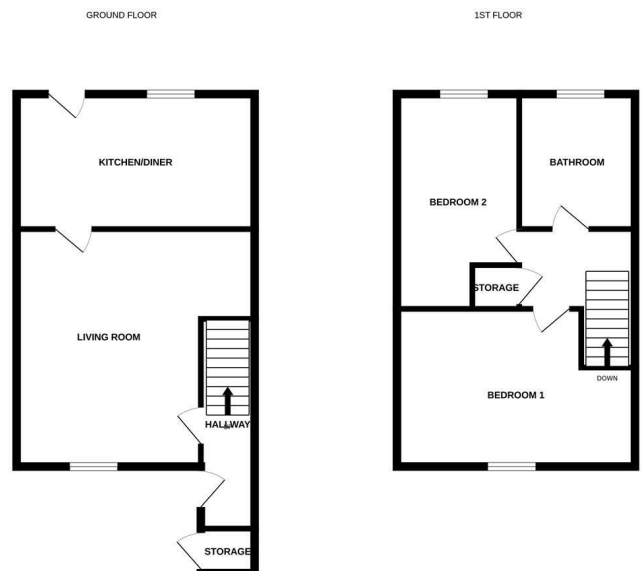
Double glazed obscure window to rear, suite comprising of a panelled bath with mixer tap and electric shower over. Low level WC, pedestal hand wash basin, radiator and extractor fan.

Garden

Patio area, mainly laid to lawn, enclosed by fencing. Rear access gate.

Frontage

Storage cupboard and off street parking.



Measurements are approximate. Not to scale. Illustrative purposes only. Made with Maptools 10025

4 Flaxpits Lane
Winterbourne
Bristol
BS36 1JX

www.aj-homes.co.uk
info@aj-homes.co.uk
01454 252140

Agents Note: Whilst every care has been taken to prepare these sales particulars, they are for guidance purposes only. All measurements are approximate are for general guidance purposes only and whilst every care has been taken to ensure their accuracy, they should not be relied upon and potential buyers are advised to recheck the measurements