



Badminton Road
BRISTOL BS36 2QL

Price:
£1,450 PCM

Property Features

- Semi Detached Home
- Three Bedrooms
- Kitchen/Dining Room
- Living Room
- Garage & Off Street Parking
- Popular Location
- Unfurnished
- Available June 2025
- Must Be Viewed



Full Description

ENTRANCE HALL

LOUNGE
14'6" x 11'1"

KITCHEN/DINING ROOM
17'6" x 11'2"
Appliances include; Oven & hob

LANDING

MASTER BEDROOM
12'10" x 9'2"
Built in wardrobes

BEDROOM TWO
10'2" x 9'2"

BEDROOM THREE
7'7" x 7'0"

BATHROOM
W/C, hand wash basin and bath with shower over

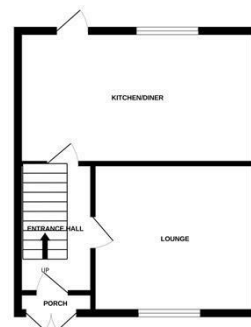
REAR GARDEN

GARAGE

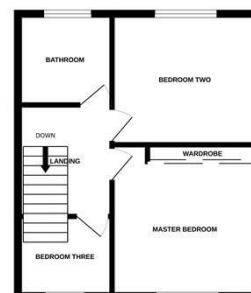
FRONT GARDEN
Off street parking and gated side access



GROUND FLOOR



1ST FLOOR



Measurements are approximate. Not to scale. Illustrative purposes only.
Made with Metropix ©2024

4 Flaxpits Lane
Winterbourne
Bristol
BS36 1JX

www.aj-homes.co.uk
info@aj-homes.co.uk
01454 252140

Agents Note: Whilst every care has been taken to prepare these sales particulars, they are for guidance purposes only. All measurements are approximate are for general guidance purposes only and whilst every care has been taken to ensure their accuracy, they should not be relied upon and potential buyers are advised to recheck the measurements