



Bakers Ground
Bristol BS34 8GF

Price:
£1,900 PCM

Property Features

- Detached Family Home
- Four Bedrooms (3 Doubles & 1 Large Single)
- En-suite, Family Bathroom & W/C
- Garage & Off Street Parking
- Popular 'Bakers Ground' Location
- Close to Parkway Station & M4/M5/M32
- Unfurnished
- Available 30/6/25

Full Description

Entrance Hall

LOUNGE

18'9" x 12'1"

DINING ROOM

12'1" x 10'1"

KITCHEN

16'5" x 10'7"

UTILITY ROOM

9'5" x 6'

CLOAKROOM

Landing

BEDROOM ONE

15'7" x 9'7"

ENSUITE

BEDROOM TWO

14'2" x 8'2"

BEDROOM THREE

11'2" x 8'2"

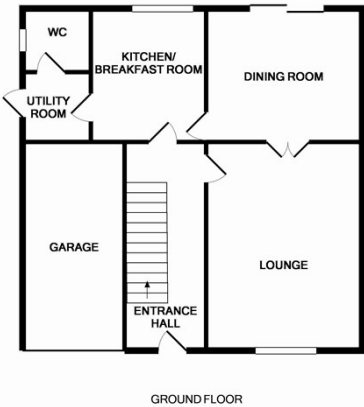
BEDROOM FOUR

11'3" x 7'7"

BATHROOM

GARDEN

GARAGE



4 Flaxpits Lane
Winterbourne
Bristol
BS36 1JX

www.aj-homes.co.uk
info@aj-homes.co.uk
01454 252140

Agents Note: Whilst every care has been taken to prepare these sales particulars, they are for guidance purposes only. All measurements are approximate are for general guidance purposes only and whilst every care has been taken to ensure their accuracy, they should not be relied upon and potential buyers are advised to recheck the measurements