



Nicholls Court Nicholls Lane  
BRISTOL BS36 1NX

**Price:**  
**£1,300 PCM**



## Property Features

- Top Floor Apartment
- Two Double Bedrooms
- En-Suite Shower Room
- Available 1st May
- Lounge/Dining Room
- White Goods Included
- Garage
- Communal Gardens
- Well Presented Throughout
- Early Viewing Recommended

## Full Description

### HALLWAY

### LOUNGE AREA

17'2" x 11'7"

### DINING AREA

6'7" x 13'0"

### KITCHEN

9'11" x 10'2"

White Goods included, washing machine, fridge freezer and cooker.

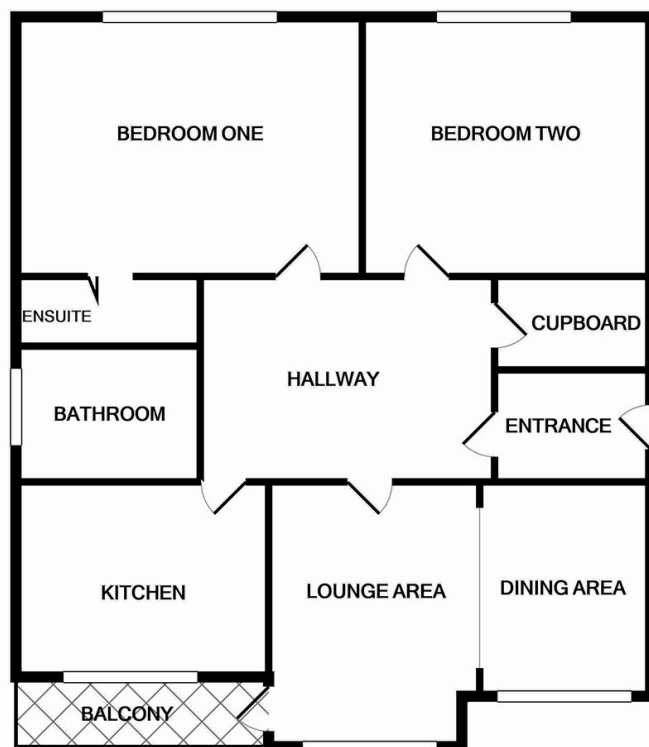
### MASTER BEDROOM

9'11" x 9'8"

### ENSUITE

### BEDROOM TWO

10'0" x 9'11"



Measurements are approximate. Not to scale. Illustrative purposes only  
Made with Metropix ©2021

4 Flaxpits Lane  
Winterbourne  
Bristol  
BS36 1JX

[www.aj-homes.co.uk](http://www.aj-homes.co.uk)  
[info@aj-homes.co.uk](mailto:info@aj-homes.co.uk)  
01454 252140

Agents Note: Whilst every care has been taken to prepare these sales particulars, they are for guidance purposes only. All measurements are approximate are for general guidance purposes only and whilst every care has been taken to ensure their accuracy, they should not be relied upon and potential buyers are advised to recheck the measurements