



Clevedale Court
Bristol BS16 2SG

Price:
£1,150 PCM

Property Features

- 1st Floor Apartment
- 2 Bedrooms
- Open Plan Living Accomodation
- Available March 2025
- Unfurnished
- White Goods
- Garage
- Popular Location

Full Description

communal Entrance
Stairs to first floor.

Entrance Hall

Open Plan Living romm/Kitchen
24'0" x 13'10"

Inner Hall

Bedroom 1
13'11" x 9'11"

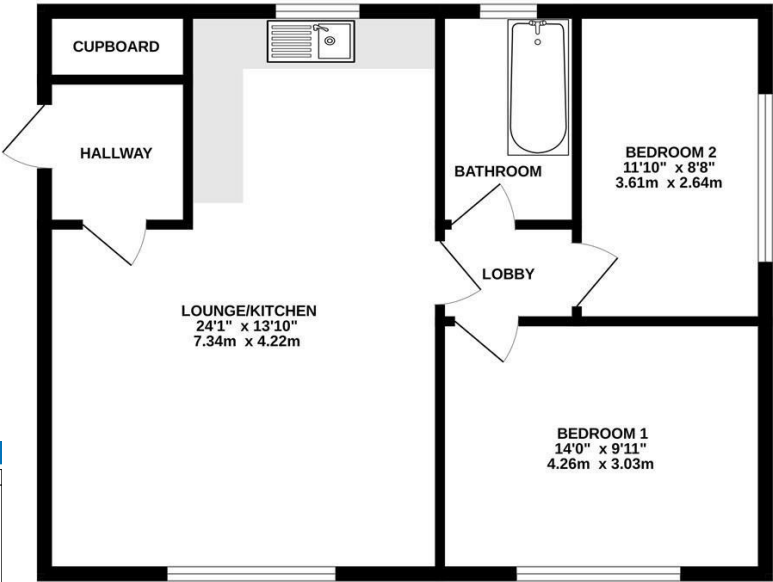
Bedroom 2
11'10" x 8'7"

Bathroom

Garage
in Block No 16



GROUND FLOOR



Energy Efficiency Rating		
	Current	Potential
Very energy efficient - lower running costs		
(92 plus) A		
(81-91) B		
(69-80) C		
(55-68) D		
(39-54) E		
(21-38) F		
(1-20) G		
Not energy efficient - higher running costs		
England & Wales	57	65
EU Directive 2002/91/EC		

Environmental Impact (CO ₂) Rating		
	Current	Potential
Very environmentally friendly - lower CO ₂ emissions		
(92 plus) A		
(81-91) B		
(69-80) C		
(55-68) D		
(39-54) E		
(21-38) F		
(1-20) G		
Not environmentally friendly - higher CO ₂ emissions		
England & Wales		
EU Directive 2002/91/EC		

Measurements are approximate. Not to scale. Illustrative purposes only.
Made with Metropix ©2025

4 Flaxpits Lane
Winterbourne
Bristol
BS36 1JX

www.aj-homes.co.uk
info@aj-homes.co.uk
01454 252140

Agents Note: Whilst every care has been taken to prepare these sales particulars, they are for guidance purposes only. All measurements are approximate are for general guidance purposes only and whilst every care has been taken to ensure their accuracy, they should not be relied upon and potential buyers are advised to recheck the measurements