

**Cotswold Road,
Bristol, BS37 6DS**

**PRICE: Offers In
Excess Of £450,000**

Property Features

- Detached Family House
- 4 Bedrooms
- Ensuite and Family Bathroom
- 2 Reception Rooms
- Kitchen/Breakfast Room
- Garage & Parking
- Popular Location
- Deceptively Spacious
- MUST BE VIEWED

Full Description

Nestled in the charming town of Chipping Sodbury, Bristol, this detached house on Cotswold Road offers a perfect blend of comfort and style. With four spacious bedrooms, this property is ideal for families seeking a serene yet vibrant community.

Upon entering, you are greeted by two reception rooms, providing ample space for relaxation and entertaining guests. These versatile areas can be tailored to suit your lifestyle, whether you envision a cosy family lounge or a sophisticated dining room. The natural light that floods these spaces creates a warm and welcoming atmosphere throughout the home.

The property boasts two bathrooms, ensuring convenience for both family members and visitors alike. On the ground floor is the Cloakroom and Utility Room.

The surrounding area of Chipping Sodbury is known for its picturesque scenery and friendly community spirit. Residents can enjoy a variety of local amenities, including shops, cafes, and parks, all within easy reach. The town's rich history and charming architecture add to its appeal, making it a wonderful place to call home.

This detached house on Cotswold Road is not just a property; it is a lifestyle choice, offering a peaceful retreat while remaining well-connected to the vibrant city of Bristol. With its generous living space and prime location, this home is a rare find that promises to meet the needs of modern family living. Do not miss the opportunity to make this lovely house your new home.



Entrance Porch

Entrance Hall

Cloakroom

Living Room
13'10" x 11'10" (4.23m x 3.63m)

Dining Room
21'3" x 10'4" (6.50m x 3.15m)

Kitchen/Breakfast Room
13'7" x 11'6" (4.16m x 3.51m)

Landing

Master Bedroom
24'2" x 11'6" (7.37m x 3.51m)

Balcony
11'6" x 5'4" (3.51m x 1.63m)

En suite Shower Room

Bedroom 2
14'3" x 12'4" (4.35m x 3.76m)

Bedroom 3
14'3" x 9'10" (4.35m x 3.02m)


Bedroom 4
7'3" x 7'0" (2.21m x 2.15m)


Bathroom

Front Garden and Parking

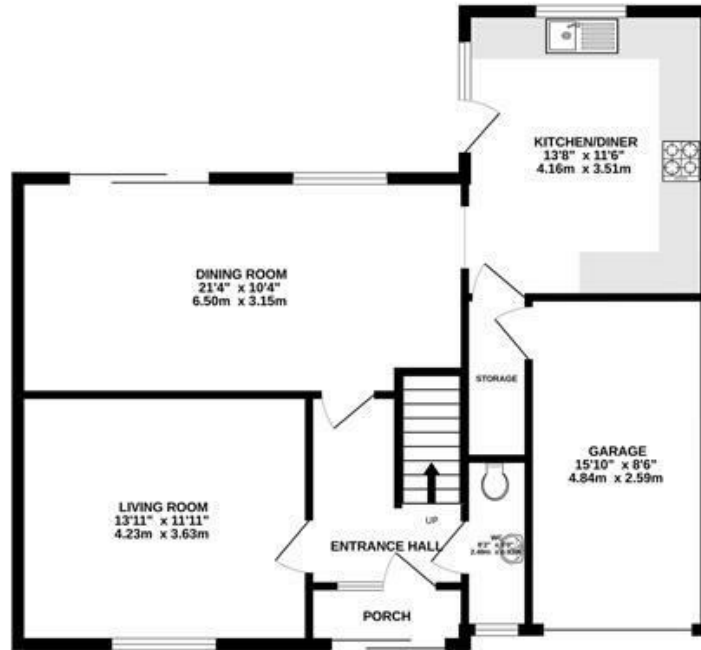
Rear Garden



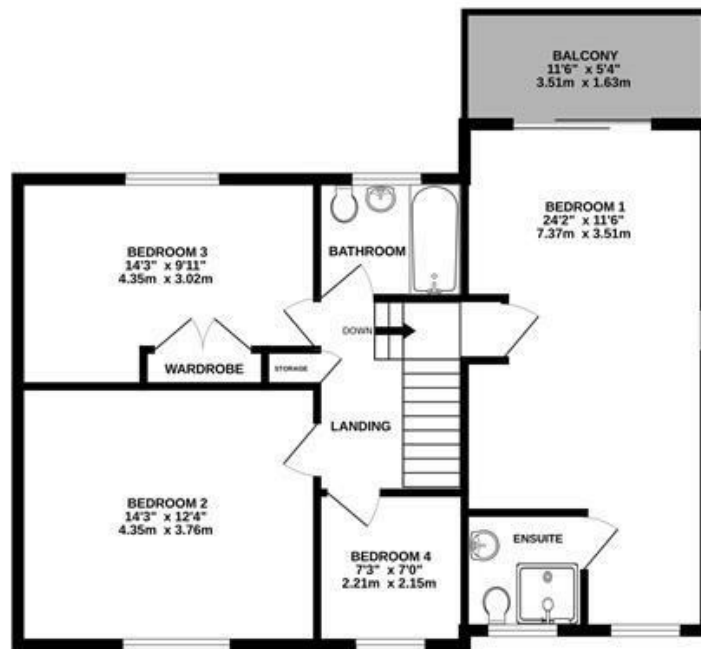
| Energy Efficiency Rating | | |
|---|---|-----------|
| | Current | Potential |
| Very energy efficient - lower running costs | | |
| (92 plus) A | | |
| (81-91) B | | |
| (69-80) C | | |
| (55-68) D | | |
| (39-54) E | | |
| (21-38) F | | |
| (1-20) G | | |
| Not energy efficient - higher running costs | | |
| | 66 | 77 |
| England & Wales | EU Directive 2002/91/EC  | |

| Environmental Impact (CO ₂) Rating | | |
|---|---|-----------|
| | Current | Potential |
| Very environmentally friendly - lower CO ₂ emissions | | |
| (92 plus) A | | |
| (81-91) B | | |
| (69-80) C | | |
| (55-68) D | | |
| (39-54) E | | |
| (21-38) F | | |
| (1-20) G | | |
| Not environmentally friendly - higher CO ₂ emissions | | |
| | | |
| England & Wales | EU Directive 2002/91/EC  | |

GROUND FLOOR



1ST FLOOR



Measurements are approximate. Not to scale. Illustrative purposes only
Made with Metropix ©2025

4 Flaxpits Lane
Winterbourne
Bristol
BS36 1JX

www.aj-homes.co.uk
info@aj-homes.co.uk
01454 252140

Agents Note: Whilst every care has been taken to prepare these sales particulars, they are for guidance purposes only. All measurements are approximate are for general guidance purposes only and whilst every care has been taken to ensure their accuracy, they should not be relied upon and potential buyers are advised to recheck the measurements