



**Walter Road,
Bristol, BS36 2FR**

**PRICE: Asking Price
£500,000**

Property Features

- Detached Family Home
- Four Bedrooms
- Three Reception Rooms
- Kitchen/Breakfast Room
- Cloakroom & Utility Room
- Garage & Off Street Parking
- Enclosed Rear Garden
- Popular Development
- Well Presented Throughout

Full Description

Entrance Hallway

Under stairs storage cupboard, radiator, stairs rising to the first floor landing, smoke detector.

Cloakroom

Double glazed obscure window to the side, low level w.c., pedestal wash hand basin, tiled splash-backs, radiator, wall mounted fuse box.

Living Room

17'2 x 13'11 (5.23m x 4.24m)

Double glazed bay window to the front, double glazed window to the side, two radiators, television point.

Dining Room

10'9m x 8'11 (3.28mm x 2.72m)

Double glazed French doors to the rear garden, radiator.

Kitchen/Breakfast Room

17'1 x 8'11 (5.21m x 2.72m)

Two double glazed windows to the rear, fitted with a range of wall and base units with roll edge work-surfaces over, space for dishwasher, space for fridge/freezer, space for dining table, built in double electric oven and gas hob with extractor over, stainless steel single drainer sink unit with mixer tap over, radiator.

Utility Room

7'7 x 5'4 (2.31m x 1.63m)

Double glazed door to the side, fitted with a range of wall and base units with roll edge work-surfaces over, space for washing machine, space for tumble dryer, wall mounted boiler, radiator.

Study

7'7 x 7'6 (2.31m x 2.29m)

Double glazed bay window to the front, radiator.



Landing
Access to the loft space (part boarded) built in airing cupboard with tank and shelving.

Bedroom One
13'11 x 11'2 (4.24m x 3.40m)
Double glazed windows to the front and side, radiator, fitted wardrobes with hanging space and shelving.

En-Suite Shower Room
Double glazed obscure window to the front, built in shower cubicle with shower over, low level w.c., radiator, pedestal wash hand basin.

Bedroom Two
13'3 x 10'4 (4.04m x 3.15m)
Double glazed window to the front, radiator, fitted wardrobes with hanging space and shelving.

Bedroom Three
10'9 x 10'9 (3.28m x 3.28m)
Double glazed window to the rear, radiator.

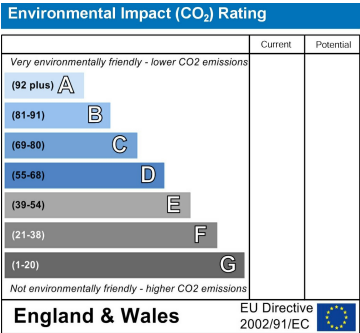
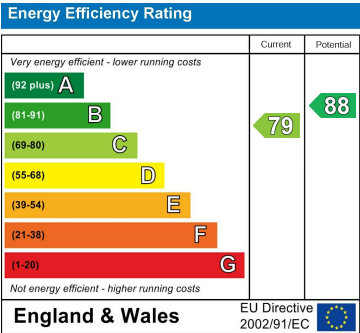
Bedroom Four
10'4 x 9'6 (3.15m x 2.90m)
Double glazed window to the rear, radiator.

Bathroom
Double glazed obscure window to the rear, panelled bath with shower attachment over, low level w.c., pedestal wash hand basin, radiator, shaver point, extractor, part tiled walls.

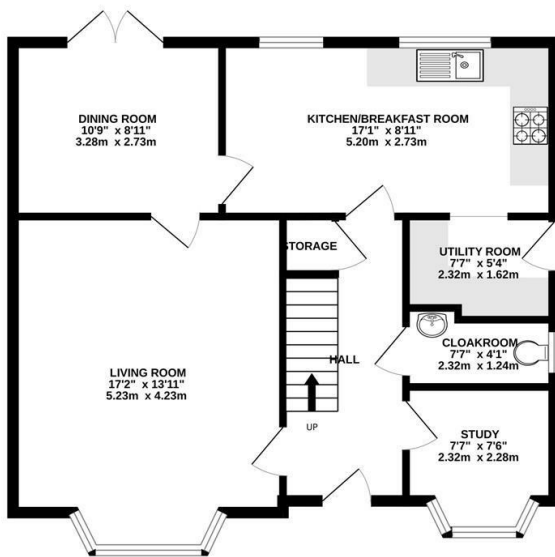
Rear Garden
Enclosed by fencing, side access gate, laid to lawn with planted borders, path to side gate, storage shed, tap.

Garage
With up and over door, power and lighting, off street parking in front of garage for two vehicles.

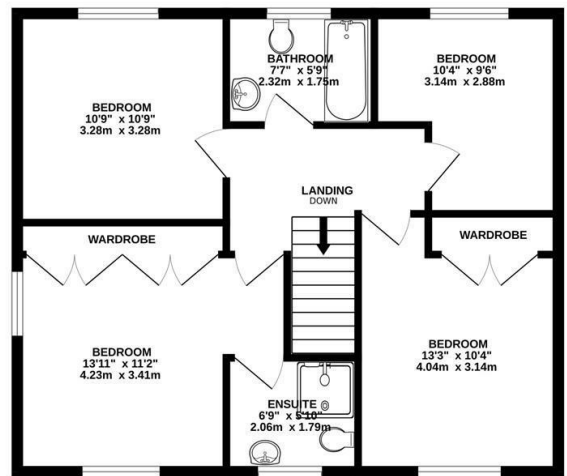
Front
Path to front door, planted area.



GROUND FLOOR
684 sq.ft. (63.6 sq.m.) approx.



1ST FLOOR
656 sq.ft. (60.9 sq.m.) approx.



TOTAL FLOOR AREA : 1340 sq.ft. (124.5 sq.m.) approx.
Measurements are approximate. Not to scale. Illustrative purposes only
Made with Metropix ©2024

4 Flaxpits Lane
Winterbourne
Bristol
BS36 1JX

www.aj-homes.co.uk
info@aj-homes.co.uk
01454 252140

Agents Note: Whilst every care has been taken to prepare these sales particulars, they are for guidance purposes only. All measurements are approximate are for general guidance purposes only and whilst every care has been taken to ensure their accuracy, they should not be relied upon and potential buyers are advised to recheck the measurements