



**Beesmoor Road,  
Bristol, BS36 2JW**

**PRICE: Asking Price  
£550,000**

## Property Features

- Extended Detached Bungalow
- Four Bedrooms
- Kitchen/Dining Room
- Lounge
- Large Entrance Hallway
- Cloakroom
- Shower Room/Utility
- Detached Timber Garage
- Situated off the Main Road
- Large Rear Garden

## Full Description

### Porch

Tiled flooring, door to the hallway.

### Entrance Hall

Double glazed window to the front, spiral stairs leading to the first floor landing, built in storage cupboards, textured ceiling.

### Cloakroom

Double glazed obscure window to the side, low level w.c.

### Shower Room/Utility

Double glazed obscure window to the side, pedestal wash hand basin, built in shower cubicle with shower over, space for washing machine, fully tiled walls, heated towel rail, textured ceiling.

### Kitchen/Dining Room

17'9 x 10'9 (5.41m x 3.28m)

Double glazed window to the rear, two double glazed obscure windows to the side, fitted with a range of wall and base units with roll edge work-surfaces over, display cabinets, space for fridge/freezer, space for cooker, extractor, stainless steel single drainer sink unit with mixer tap over, tiled splash-backs, textured ceiling, strip lighting, radiator, space for dining table, pantry cupboard.

### Living Room

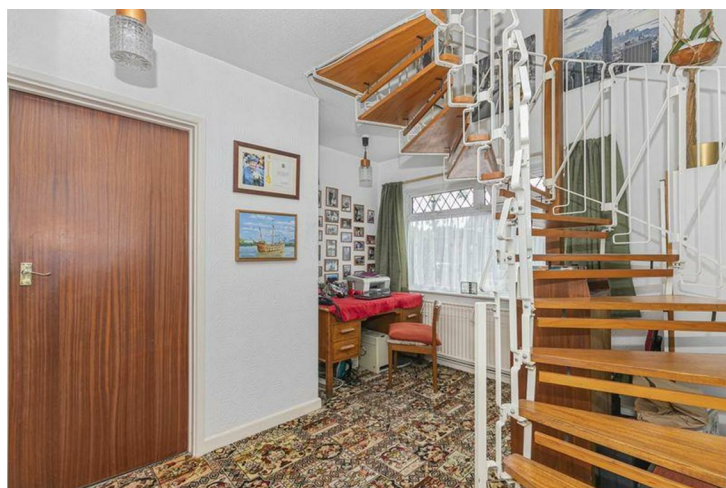
20'7 x 10'5 (6.27m x 3.18m)

Double glazed patio doors to the rear with awning to the rear garden, feature fireplace with electric fire, radiator, textured ceiling, wall light points.

### Bedroom/Reception Room

12 x 11'6 (3.66m x 3.51m)

Double glazed window to the front, radiator, textured ceiling.



### Bedroom One

14'3 x 11'6 (4.34m x 3.51m)

Double glazed window to the rear, fitted wardrobes with hanging space and shelving with cupboards above, textured ceiling, radiator.



### Landing

Double glazed Velux window, eaves storage, textured ceiling, smoke detector, radiator.

### Bedroom Two

15 x 11'11 (4.57m x 3.63m)

Double glazed window to the rear, radiator, two eaves storage cupboards, textured ceiling.

### Bedroom Three

15 x 12'11 (4.57m x 3.94m)

Double glazed window to the rear, double glazed obscure window to the side, eaves storage cupboard.

### Bathroom

15 x 12'11 (4.57m x 3.94m)

Double glazed obscure window to the rear, panelled bath, pedestal wash hand basin, bidet, low level w.c., radiator, textured ceiling.



### Front Garden

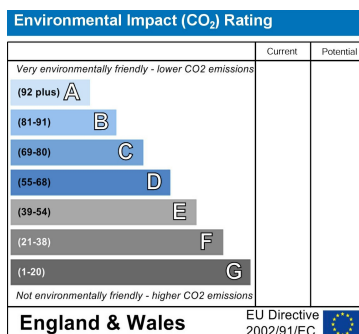
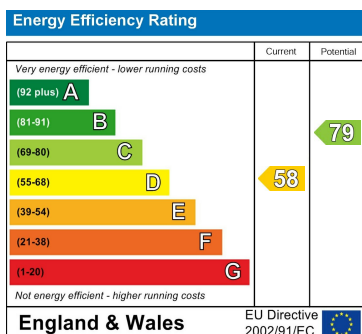
Laid to lawn with planted borders, block paved path leading to the front door, lighting, tap to the side, block paved driveway leading to double length car port and timber garage, side access to the rear garden, off street parking for several vehicles.

### Timber Garage

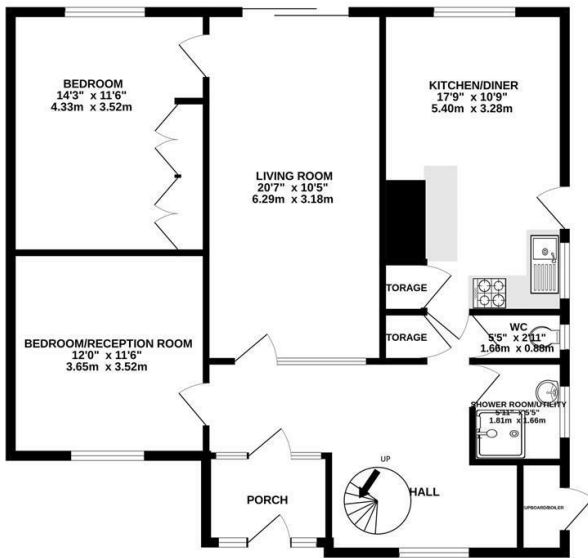
With double doors to the front, door to the side, two windows to the side.

### Rear Garden

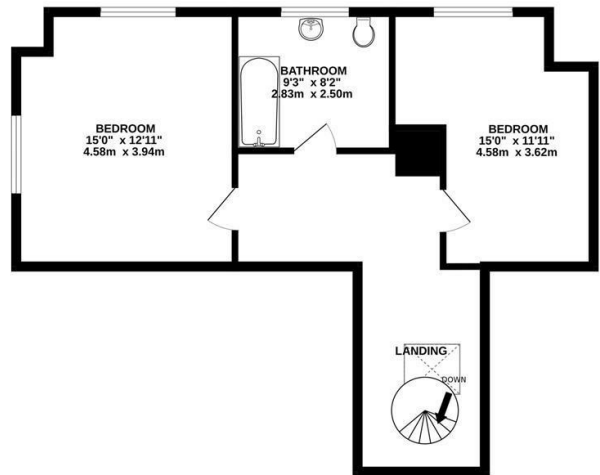
Large rear garden mainly laid to lawn with planted borders, paved patio area, mature shrubs and trees, summer house, storage shed to the rear, enclosed by fencing, cox apple tree.



GROUND FLOOR  
963 sq.ft. (89.5 sq.m.) approx.



1ST FLOOR  
584 sq.ft. (54.2 sq.m.) approx.



TOTAL FLOOR AREA : 1547 sq.ft. (143.7 sq.m.) approx.  
Measurements are approximate. Not to scale. Illustrative purposes only  
Made with Metropix ©2024

4 Flaxpits Lane  
Winterbourne  
Bristol  
BS36 1JX

www.aj-homes.co.uk  
info@aj-homes.co.uk  
01454 252140

Agents Note: Whilst every care has been taken to prepare these sales particulars, they are for guidance purposes only. All measurements are approximate are for general guidance purposes only and whilst every care has been taken to ensure their accuracy, they should not be relied upon and potential buyers are advised to recheck the measurements