



**Buckingham Drive,
Bristol, BS34 8NS**

PRICE: £1,250 PCM

Property Features

- End Of Terrace Home
- Two Bedrooms
- Kitchen/Breakfast Room
- Living Room
- Rear Garden
- Garage
- Unfurnished
- Available November 2024



Full Description

Entrance Hall

Living Room

12'2" x 10'8" (3.72m x 3.26m)

Kitchen/Breakfast Room

13'10" x 9'0" (4.24m x 2.76m)

landing

Bedroom 1

11'10" x 10'9" (3.63m x 3.30m)

Bedroom 2

9'6" x 8'6" (2.90m x 2.60m)

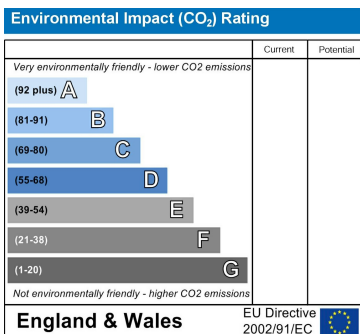
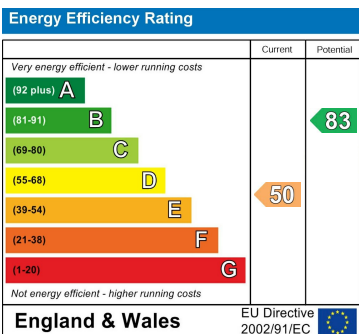
Bathroom

Rear Garden

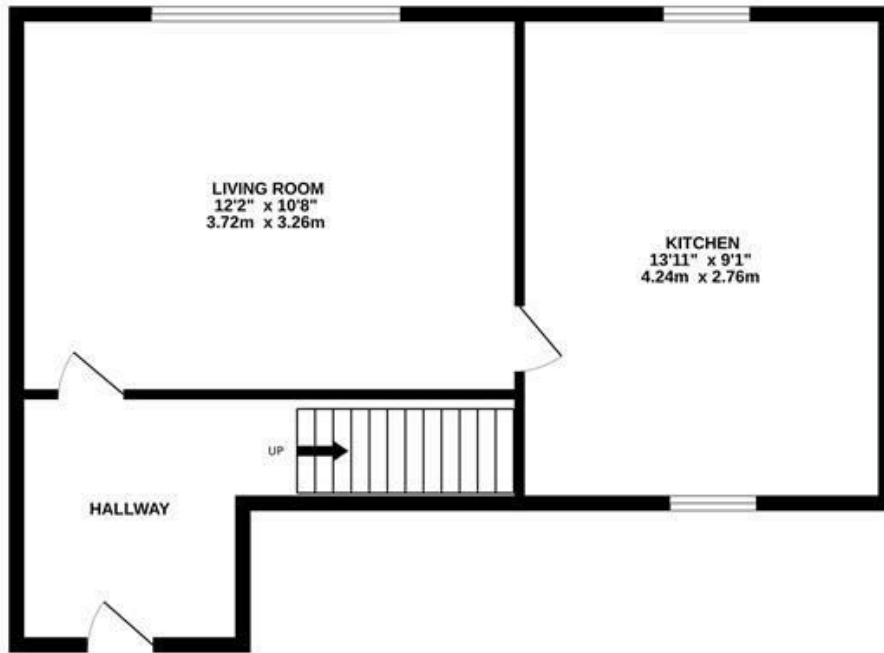
Garage

In nearby block

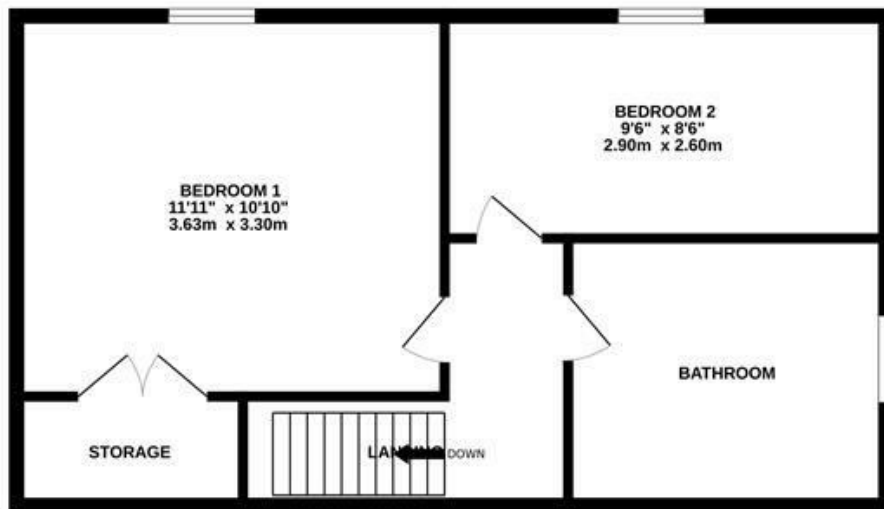




GROUND FLOOR



1ST FLOOR



Measurements are approximate. Not to scale. Illustrative purposes only
Made with Metropix ©2024

4 Flaxpits Lane
Winterbourne
Bristol
BS36 1JX

www.aj-homes.co.uk
info@aj-homes.co.uk
01454 252140

Agents Note: Whilst every care has been taken to prepare these sales particulars, they are for guidance purposes only. All measurements are approximate are for general guidance purposes only and whilst every care has been taken to ensure their accuracy, they should not be relied upon and potential buyers are advised to recheck the measurements