



Badminton Road  
BRISTOL BS36 2QL

**Price:**  
**£1,450 PCM**

# Property Features

- Semi Detached Home
- Three Bedrooms
- Kitchen/Dining Room
- Living Room
- Garage & Off Street Parking
- Popular Location
- Unfurnished
- Available September 2024
- Must Be Viewed



## Full Description

### ENTRANCE HALL

### LOUNGE

14'6" x 11'1"

### KITCHEN/DINING ROOM

17'6" x 11'2"

Appliances include; Oven & hob

### LANDING

### MASTER BEDROOM

12'10" x 9'2"

Built in wardrobes

### BEDROOM TWO

10'2" x 9'2"

### BEDROOM THREE

7'7" x 7'0"

### BATHROOM

W/C, hand wash basin and bath with shower over

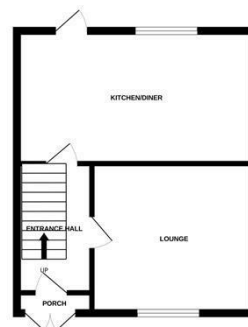
### REAR GARDEN

### GARAGE

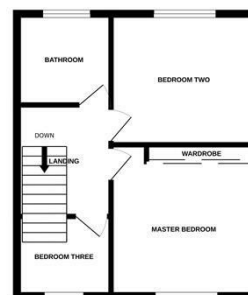
### FRONT GARDEN

Off street parking and gated side access

GROUND FLOOR



1ST FLOOR



Measurements are approximate. Not to scale. Illustrative purposes only.  
Made with Metropix ©2024

4 Flaxpits Lane  
Winterbourne  
Bristol  
BS36 1JX

[www.aj-homes.co.uk](http://www.aj-homes.co.uk)  
[info@aj-homes.co.uk](mailto:info@aj-homes.co.uk)  
01454 252140

Agents Note: Whilst every care has been taken to prepare these sales particulars, they are for guidance purposes only. All measurements are approximate are for general guidance purposes only and whilst every care has been taken to ensure their accuracy, they should not be relied upon and potential buyers are advised to recheck the measurements