



**Down Road,  
BRISTOL, BS36 1BZ**

**PRICE: £375,000**

## Property Features

- Semi Detached Family Home
- Three Bedrooms
- Open Plan Kitchen
- Living Room
- Downstairs Shower Room
- Garage & Parking
- Utility Area
- No Chain



## Full Description

ENTRANCE HALL

LOUNGE

17'2" x 14'2" (5.25m x 4.34m)

DINING AREA

11'0" x 10'10" (3.36m x 3.31m)

KITCHEN AREA

9'4" x 5'11" (2.87m x 1.82m)

BATHROOM

LANDING

MASTER BEDROOM

12'2" x 11'0" (3.71m x 3.36m)

CLOAKROOM

BEDROOM TWO

12'2" x 10'10" (3.71m x 3.31m)

BEDROOM THREE

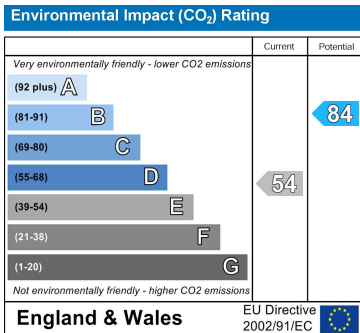
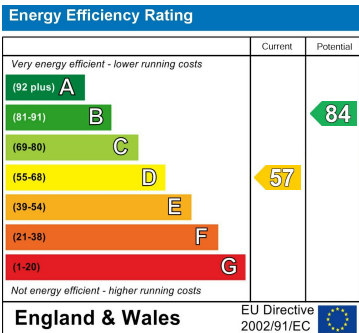
9'3" x 6'4" (2.84m x 1.94m)

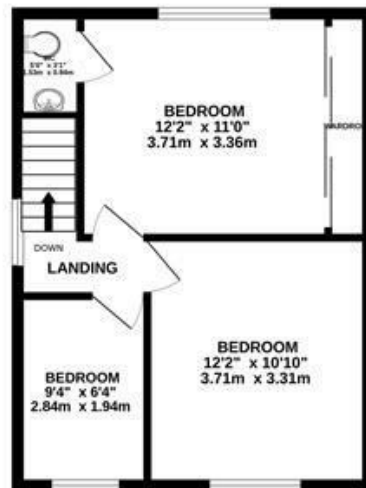
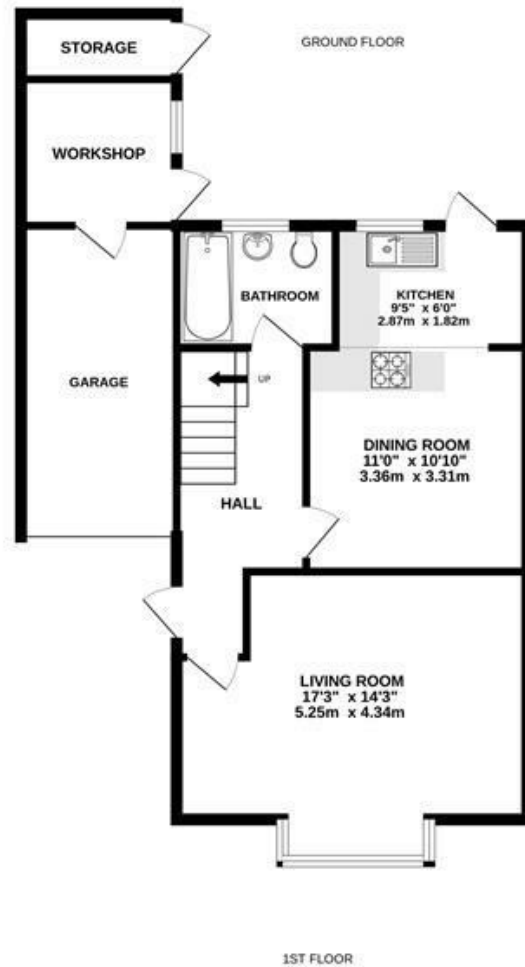
GARAGE

UTILITY ROOM

REAR GARDEN







Measurements are approximate. Not to scale. Illustrative purposes only  
Made with Metropix ©2024

4 Flaxpits Lane  
Winterbourne  
Bristol  
BS36 1JX

www.aj-homes.co.uk  
info@aj-homes.co.uk  
01454 252140

Agents Note: Whilst every care has been taken to prepare these sales particulars, they are for guidance purposes only. All measurements are approximate are for general guidance purposes only and whilst every care has been taken to ensure their accuracy, they should not be relied upon and potential buyers are advised to recheck the measurements