



**Mayshill Farm,
Frampton Cotterell, BS36 2NS**

PRICE: £700,000

Property Features

- Brand New Barn Conversion
- Detached Single Story
- 2/3 Bedrooms
- Open Plan Living Accomodation
- Open Plan Kitchen
- Master Bedroom & Ensuite
- Family Bathroom
- Large Corner Plot
- Block Paved Off Street Parking
- MUST BE VIEWED

Full Description

Welcome to 'The Old Diaiy' Mayshill Farm in the picturesque village of Frampton Cotterell! This stunning Detached barn conversion offers a perfect blend of modern living within a traditional setting.

As you step into this new build property, you are greeted by a spacious open plan living area, ideal for entertaining guests or simply relaxing with your family. The property boasts one/two reception rooms, two/three bedrooms, and two modern bathrooms, providing ample space for comfortable living.

Situated on a detached plot, this barn conversion offers privacy and tranquility, allowing you to enjoy the peaceful surroundings of Mayshill Farm. The property's unique design and character make it a truly special place to call home.

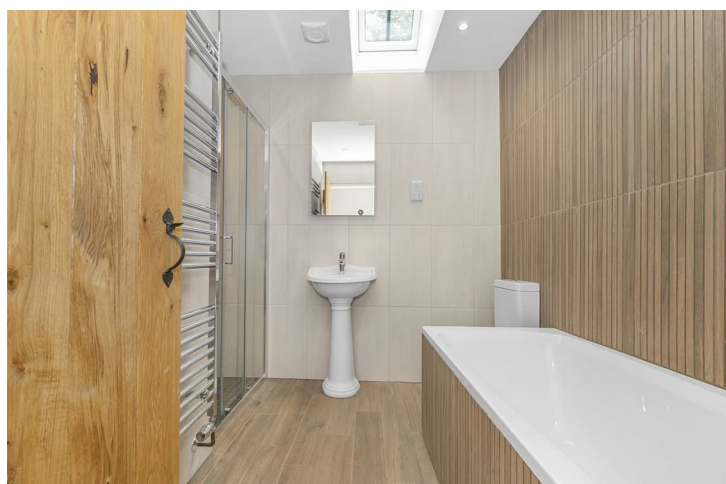
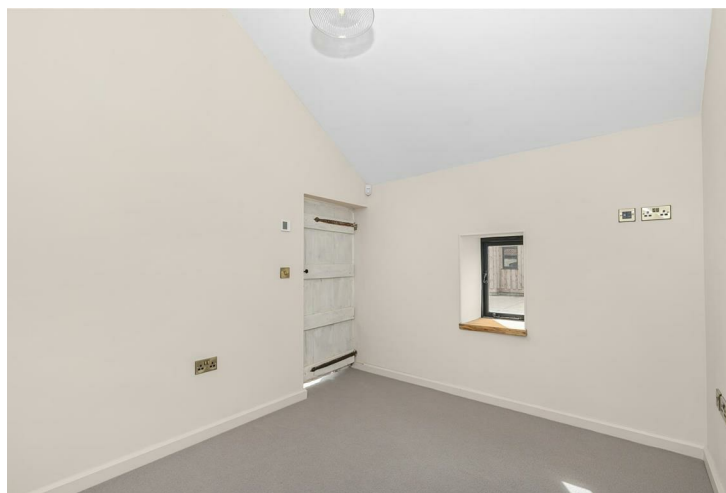
Don't miss the opportunity to make this charming barn conversion your own. Contact us today to arrange a viewing and experience the beauty of country living at Mayshill Farm!

Open Plan Living Accomodation
39'5" x 11'3" (12.03m x 3.44m)

Study/Bedroom 3
11'3" x 9'4" (3.44m x 2.86m)

Inner Hall

Cloakroom



Plant Cupboard

Shower Room

Master Bedroom
14'2" x 13'5" (4.32m x 4.10m)

Ensuite Shower Room

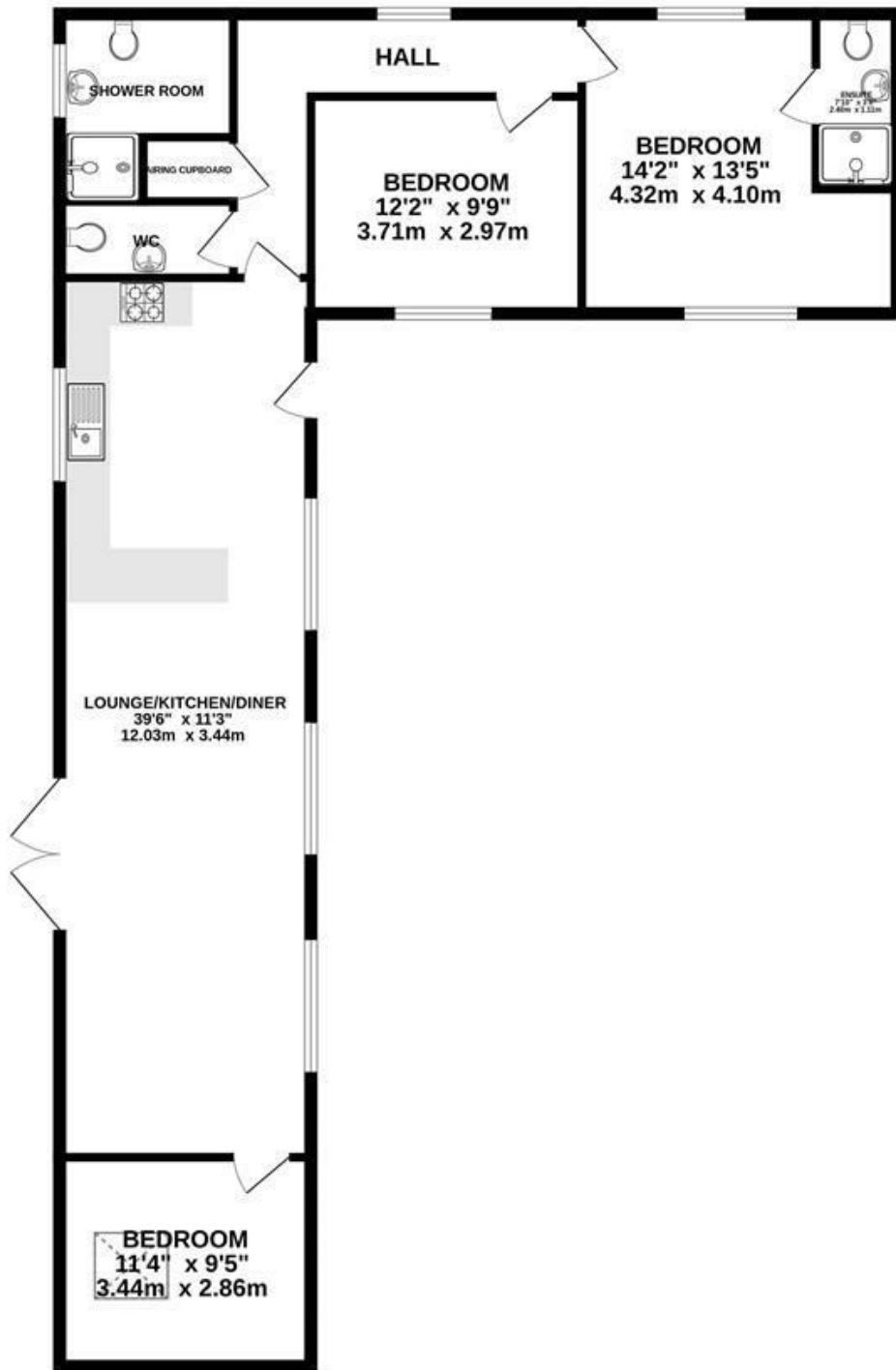
Bedroom 2
12'2" x 9'8" (3.71m x 2.97m)

Block Paved Parking

Large Corner Plot



GROUND FLOOR



Measurements are approximate. Not to scale. Illustrative purposes only
Made with Metropix ©2024

4 Flaxpits Lane
Winterbourne
Bristol
BS36 1JX

www.aj-homes.co.uk
info@aj-homes.co.uk
01454 252140

Agents Note: Whilst every care has been taken to prepare these sales particulars, they are for guidance purposes only. All measurements are approximate are for general guidance purposes only and whilst every care has been taken to ensure their accuracy, they should not be relied upon and potential buyers are advised to recheck the measurements