



**Mayshill Farm,
Frampton Cotterell, BS36 2NS**

PRICE: £750,000

Property Features

- Brand New Barn Conversion
- 2 Bedrooms
- 7m Living Room
- 6m Kitchen/Breakfast Room
- Utility & CloakRoom
- Open Fire
- 2 Ensuite Shower Rooms
- Large Corner Plot
- Block Paved Parking
- Views Over Open Fields

Originally part of the The hunting lodge formerly of the Smyth family Ashton Court estate. Welcome to 'The Forge' Mayshill in the picturesque village of Frampton Cotterell! This stunning barn conversion offers a perfect blend of modern living within a charming rural setting.

As you step inside, you'll be greeted by not one, but two spacious reception rooms, providing ample space for entertaining guests or simply relaxing with your loved ones. The property boasts two cosy bedrooms, ideal for a small family or those looking for a peaceful retreat.

With two well-appointed bathrooms, you'll never have to worry about queuing for the shower in the morning rush. The new build property exudes a fresh and contemporary feel, offering all the comforts of modern living in a characterful barn conversion.

Situated on a large plot, the property offers plenty of outdoor space for gardening enthusiasts or those who simply enjoy the great outdoors. Imagine waking up to the tranquil views over open fields, a perfect way to start your day with a sense of peace and serenity.

Don't miss out on the opportunity to make this barn conversion your new home. Contact us today to arrange a viewing and experience the beauty of Mayshill Farm for yourself.

Full Description

Living Room

23'9" x 17'11" (7.24m x 5.48m)



Study
9'10" x 6'7" (3.00m x 2.02m)

Kitchen/Breakfast Room
19'6" x 15'7" (5.96m x 4.75m)

Utility Room
8'4" x 5'7" (2.55m x 1.71m)

Plant Room

Cloakroom

Landing

Master Bedroom
11'11" x 10'11" (3.65m x 3.35m)

Ensuite Shower Room

Bedroom 2
9'10" x 9'3" (3.00m x 2.83m)

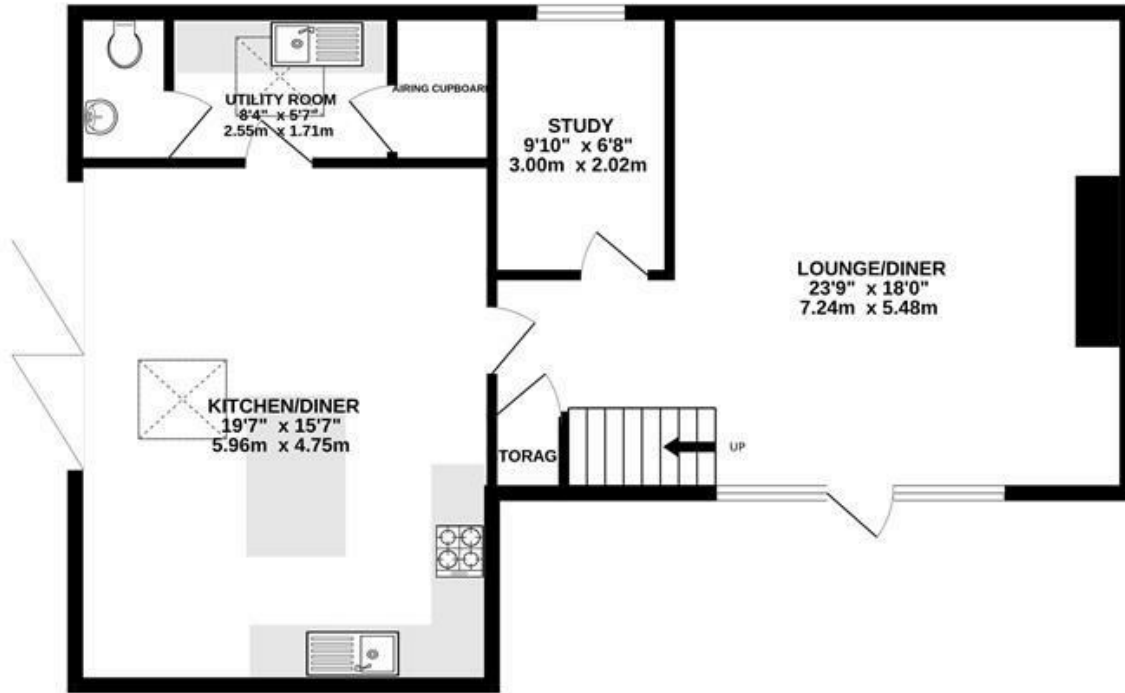
Ensuite Shower Room

Blocked Paved Parking

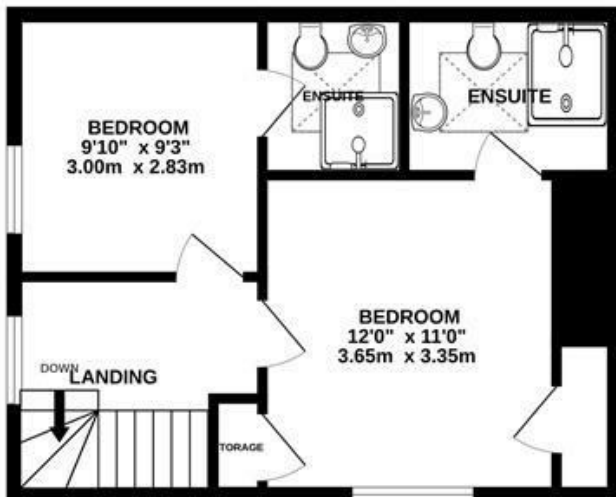
Large Corner Plot Garden
VIEWS OVER OPEN FIELDS



GROUND FLOOR



1ST FLOOR



Measurements are approximate. Not to scale. Illustrative purposes only
Made with Metropix ©2024

4 Flaxpits Lane
Winterbourne
Bristol
BS36 1JX

www.aj-homes.co.uk
info@aj-homes.co.uk
01454 252140

Agents Note: Whilst every care has been taken to prepare these sales particulars, they are for guidance purposes only. All measurements are approximate and for general guidance purposes only and whilst every care has been taken to ensure their accuracy, they should not be relied upon and potential buyers are advised to recheck the measurements