

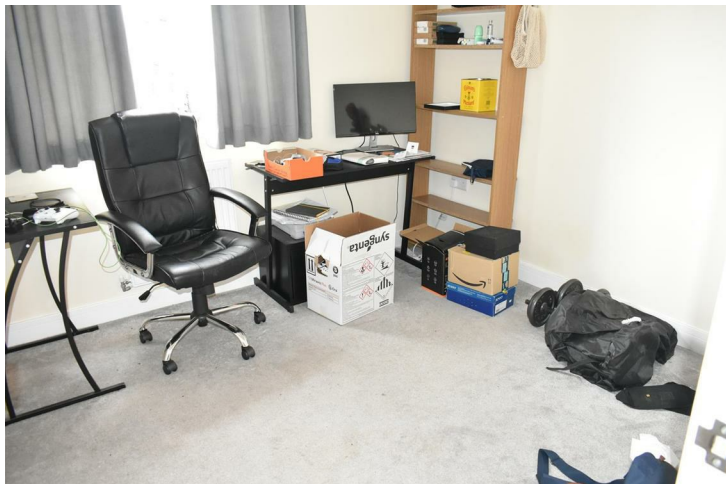


Mount Pleasant
Wotton-under-Edge GL12 7JS

Price:
£1,200 PCM

Property Features

- Three Storey Terraced Home
- Three Bedrooms
- Three Toilets
- Available August 2024
- Fridge Freezer and Oven Provided
- Garden and Parking
- MUST BE VIEWED



Full Description

ENTRANCE HALL

KITCHEN

9'1" x 7'8"

Inc Fridge freezer, oven, hob and extractor.

CLOAKROOM

LIVING ROOM

12'11" x 11'7"

LANDING

BEDROOM

9'11" x 9'4"

Fitted wardrobe. Wall mounted combi boiler.

BATHROOM

8'2" x 5'7"

Shower over bath.

BEDROOM

11'0" x 10'8"

BEDROOM

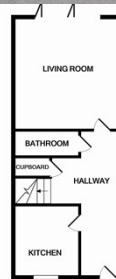
9'4" x 9'1"

Fitted wardrobe

SHOWER ROOM

OFF STREET PARKING

GARDEN



GROUND FLOOR



1ST FLOOR



2ND FLOOR

Measurements are approximate. Not to scale. Illustrative purposes only. Made with Mapigo 10/2021

4 Flaxpits Lane
Winterbourne
Bristol
BS36 1JX

www.aj-homes.co.uk
info@aj-homes.co.uk
01454 252140

Agents Note: Whilst every care has been taken to prepare these sales particulars, they are for guidance purposes only. All measurements are approximate are for general guidance purposes only and whilst every care has been taken to ensure their accuracy, they should not be relied upon and potential buyers are advised to recheck the measurements