



Mayshill Farmhouse, Mays Hill,  
Bristol, BS36 2NS

**Price: £1,500,000**

# Property Features

- Grade II Listed Farmhouse
- Flexible Accommodation Set over 4 Floors
- 8 Bedrooms
- 4 Bathrooms
- 2 Basement Rooms
- Numerous Character Features
- Sought After Location
- Completely Refurbished
- Panaramic Views and Delightful Gardens
- NO CHAIN

## Full Description

This outstanding Grade II farmhouse situated in this popular location with flexible accommodation split over four floors. In the basement the 2 rooms are ideal as cinema rooms, gym, office or similar whilst on the ground floor the 2 reception rooms are complimented by a large kitchen/breakfast room, utility and boot room and cloakroom. On the next 2 floors the 8 bedrooms and 4 bathrooms are equally split. Externally the property occupies a lovely plot with views on all aspects with ample off street parking. In total this magnificent family home is rarely available and combines both the old and modern seamlessly an early viewing is essential to appreciate all this property has to offer.

Entrance Hall

Living Room  
14'10" x 12'7"

Reception Room  
15'0" x 12'3"

Lobby

Boot Room

Cloakroom

Utility Room  
6'7" x 6'3"

Kitchen/Breakfast Room  
25'3" x 15'0"

Stairs to First Floor Landing



**Stairs down to Basement Level**

**Basement Hallway**

**Basement Room 1**  
13'7" x 11'5"

**Basement Room 2**  
13'6" x 11'5"

**First Floor Landing**

**Bedroom**  
15'0" x 12'7"  
Front Aspect

**Bedroom**  
14'10" x 12'7"  
Front aspect

**Bedroom**  
16'1" x 11'0"  
Rear Aspect

**Bedroom**  
11'0" x 10'7"  
Rear Aspect

**En suite Shower Room**

**Bathroom**  
Front aspect

**Second Floor Landing**

**Master Bedroom/Bathroom Suite**  
16'1" x 14'11"  
Front aspect

**Ensuite Shower Room**

**Bedroom**  
15'0" x 11'10"  
Dual Aspect

**Bedroom**  
12'2" x 12'2"

**Ensuite Shower Room**

**Bedroom**  
16'1" x 10'4"  
Side Aspect

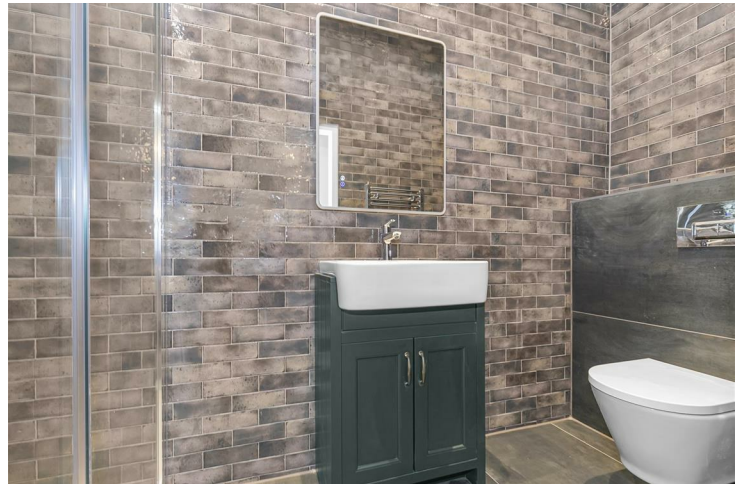
**Outside Gardens**

**Oak Double Carport**

**Block Paved Parking For Numerous Vehicles**

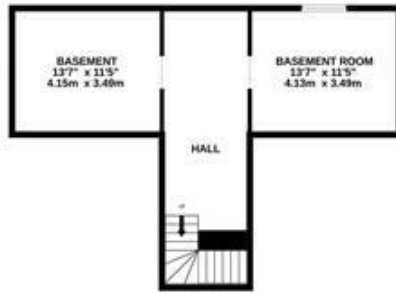




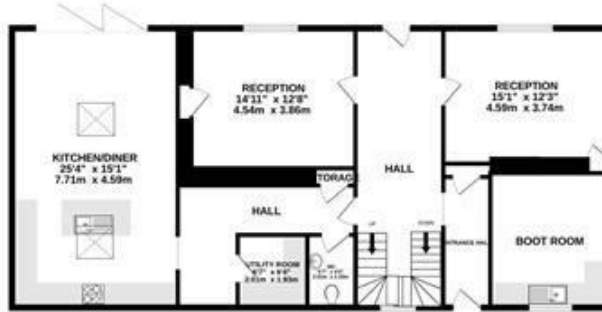




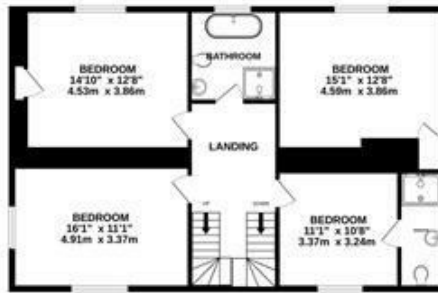
BASEMENT



GROUND FLOOR



1ST FLOOR



2ND FLOOR



Measurements are approximate. Not to scale. Illustrative purposes only  
Made with Metroptix ©2024

4 Flaxpits Lane  
Winterbourne  
Bristol  
BS36 1JX

[www.aj-homes.co.uk](http://www.aj-homes.co.uk)  
[info@aj-homes.co.uk](mailto:info@aj-homes.co.uk)  
01454 252140

Agents Note: Whilst every care has been taken to prepare these sales particulars, they are for guidance purposes only. All measurements are approximate and for general guidance purposes only and whilst every care has been taken to ensure their accuracy, they should not be relied upon and potential buyers are advised to recheck the measurements