



**Arthurs Close,
Bristol, BS16 7JB**

**PRICE: Asking Price
£185,000**

Property Features

- Second Floor Apartment
- Two Bedrooms
- No Onward Chain
- Off Street Parking & Communal Gardens
- Close to Ring Road and Motorway Links



Full Description

ENTRANCE HALL

Storage cupboard housing hot water tank

KITCHEN

10'5" x 7'5" (3.18 x 2.26)

Double glazed window to rear, stainless steel sink and drainer with mixer tap. Electric hob with extractor over and integrated oven. Spotlights. Space for dishwasher, space for washing machine and space for fridge freezer. Electric heater, tiled splashback and extractor fan.

LOUNGE/DINER

14'11" x 10'3" (4.55 x 3.12)

Night storage heater, double glazed French doors to Juliet balcony, wall lights.

MASTER BEDROOM

11'4" x 10'0" (3.45 x 3.05)

Double glazed window front, panel radiator and wall lights.

BEDROOM TWO

7'9" x 6'9" (2.36 x 2.06)

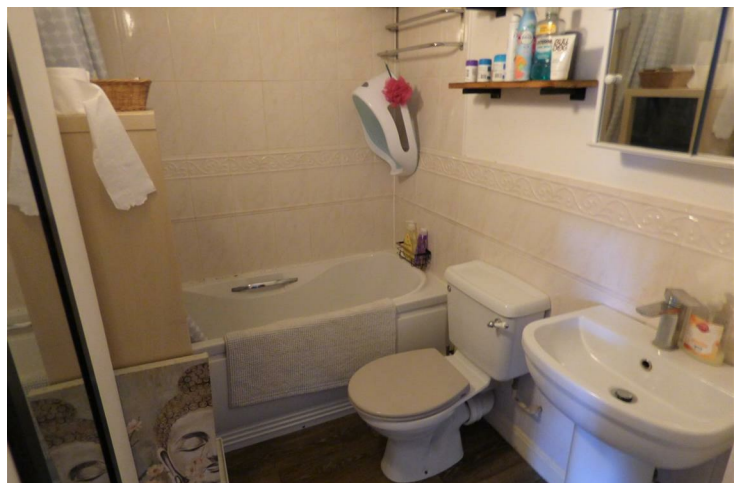
Double glazed window front, panel radiator and wall lights.

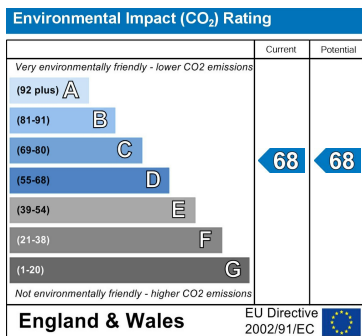
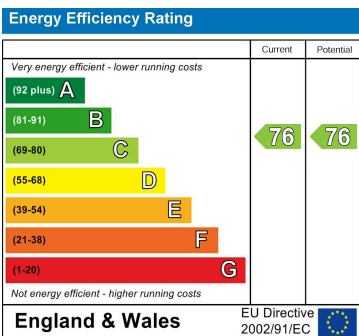
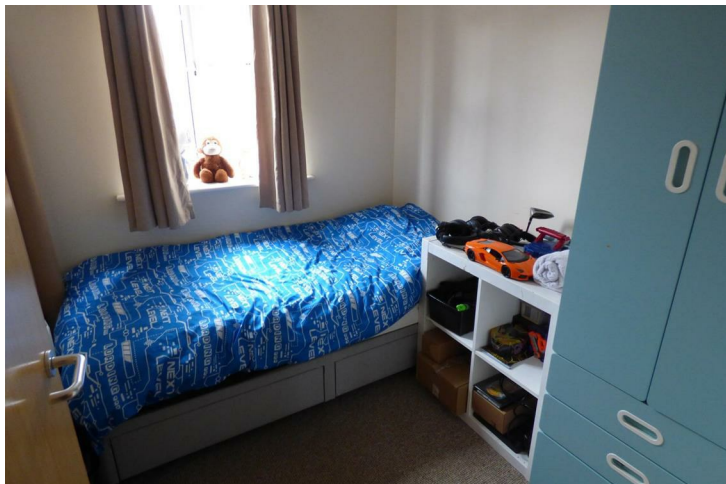
BATHROOM

W/C, hand wash basin, panelled bath with electric shower over, shaver point, wall heater and extractor fan.

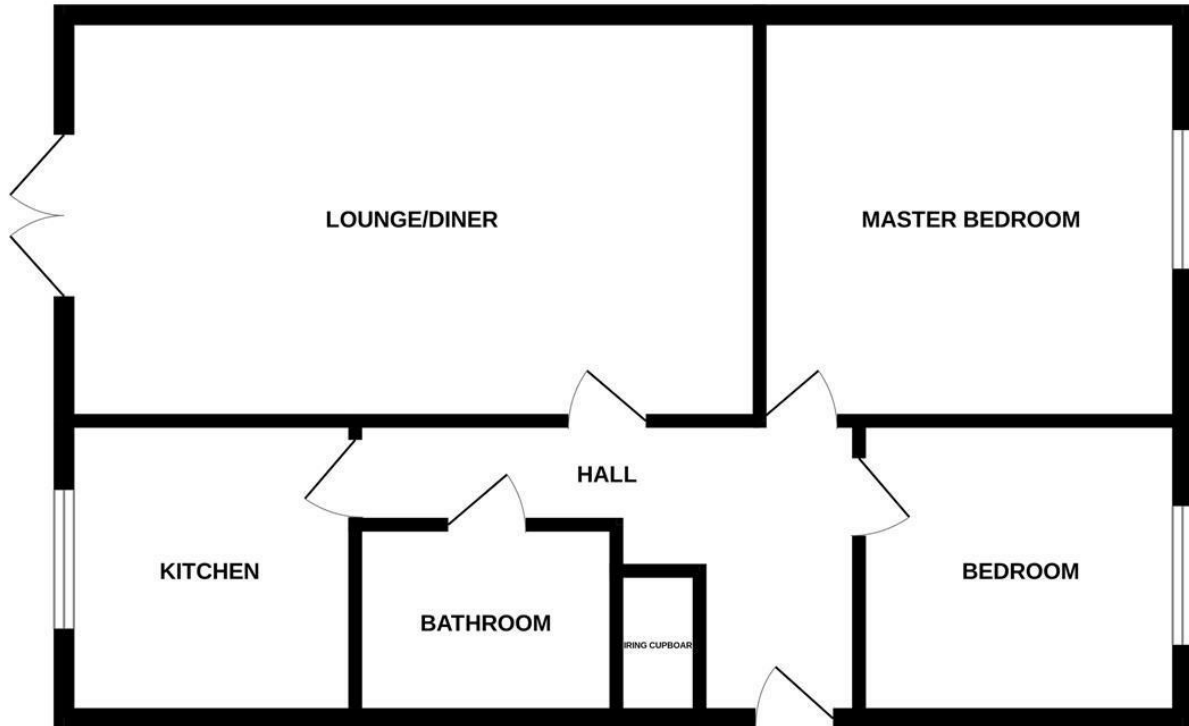
PARKING

Off street parking for one car.





GROUND FLOOR



Measurements are approximate. Not to scale. Illustrative purposes only
Made with Metropix ©2024

4 Flaxpits Lane
Winterbourne
Bristol
BS36 1JX

www.aj-homes.co.uk
info@aj-homes.co.uk
01454 252140

Agents Note: Whilst every care has been taken to prepare these sales particulars, they are for guidance purposes only. All measurements are approximate are for general guidance purposes only and whilst every care has been taken to ensure their accuracy, they should not be relied upon and potential buyers are advised to recheck the measurements