



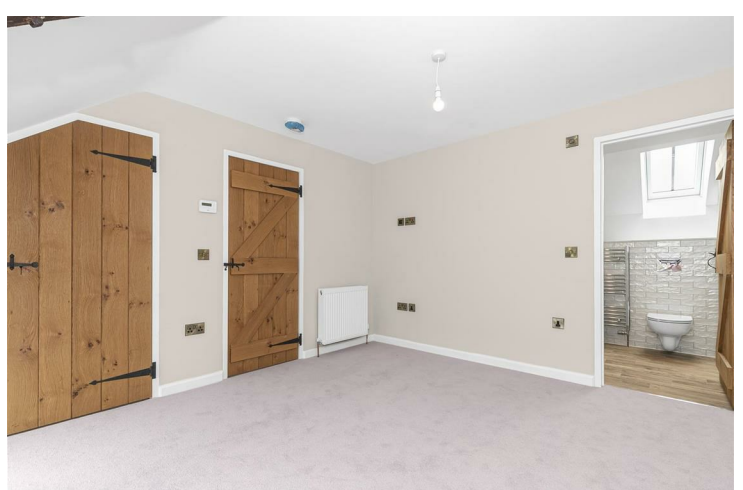
**Mays Hill,
Bristol, BS36 2NS**

**PRICE: From Offers In
Excess Of £700,000**

Property Features

- COMING SOON
- FOUR BARN CONVERSIONS
- PRICES FROM: £700,000
- INDIVIDUAL BARN CONVERSIONS ON LARGE PLOTS
- COMPLETION AUTUMN 2024
- SOUGHT AFTER LOCATION
- HIGH SPECIFICATION
- VIEWS OVER OPEN FIELDS & FARM LAND
- WEALTH OF CHARACTER FEATURES
- BOOKING VIEWING SLOTS NOW

COMING SOON - FOUR CONVERTED BARNs READY AUTUMN 2024. Planning reference: P22/04364/F EACH PROPERTY IS UNIQUE WITH A WEALTH OF CHARACTER AND SITUATED ON GOOD SIZED PLOTS. FULL DETAILS WILL BE AVAILABLE SOON HOWEVER VIEWINGS ARE AVAILABLE BY PRIOR ARRANGEMENTS. CALL 01454 252140 TO BOOK A SLOT.





4 Flaxpits Lane
Winterbourne
Bristol
BS36 1JX

www.aj-homes.co.uk
info@aj-homes.co.uk
01454 252140

Agents Note: Whilst every care has been taken to prepare these sales particulars, they are for guidance purposes only. All measurements are approximate are for general guidance purposes only and whilst every care has been taken to ensure their accuracy, they should not be relied upon and potential buyers are advised to recheck the measurements