



Seymour Place
BRISTOL BS36 2FH

Price:
£1,200 PCM

Property Features

- Semi Detached Coach House
- Two Double Bedrooms
- Private Garden
- Garage (for storage only)
- Unfurnished
- Family Bathroom & En-suite
- Available 27th June 2024
- Gas Central Heating
- Pets Considered, No Smokers or Sharers



Full Description

ENTRANCE HALL

Stairs to first floor

LANDING

Large storage cupboard

LOUNGE/DINER

17'9" x 14'2"

Juliette Balcony

KITCHEN

8'0" x 7'0"

MASTER BEDROOM

12'7" x 8'10"

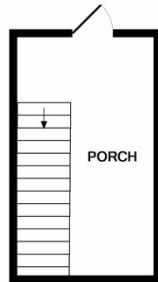
ENSUITE SHOWER ROOM

BEDROOM TWO

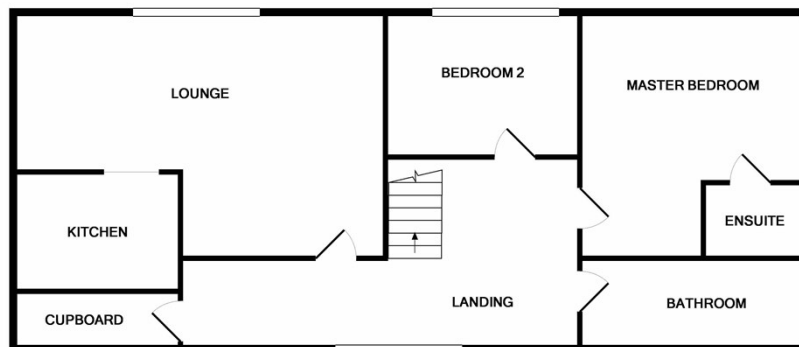
BATHROOM

GARAGE

GARDEN



GROUND FLOOR



1ST FLOOR

Whilst every attempt has been made to ensure the accuracy of the floor plan contained here, measurements of doors, windows, rooms and any other items are approximate and no responsibility is taken for any error, omission, or mis-statement. This plan is for illustrative purposes only and should be used as such by any prospective purchaser. The services, systems and appliances shown have not been tested and no guarantee as to their operability or efficiency can be given.
Made with Metropix ©2013

4 Flaxpits Lane
Winterbourne
Bristol
BS36 1JX

www.aj-homes.co.uk
info@aj-homes.co.uk
01454 252140

Agents Note: Whilst every care has been taken to prepare these sales particulars, they are for guidance purposes only. All measurements are approximate and for general guidance purposes only and whilst every care has been taken to ensure their accuracy, they should not be relied upon and potential buyers are advised to recheck the measurements