



Marsh Close,
Bristol, BS36 1HY

Guide Price: £1,150 PCM

Property Features

- Semi Detached Home
- Open Plan Accommodation
- 20' Living Room
- 13' x 13' Bedroom
- Available 25th August
- Front & Rear Gardens
- Off Street Parking

Full Description

LIVING ROOM

20'0" x 13'3"

Front aspect double glazed window. Underfloor heating. Television point. Open plan to:

KITCHEN

8'7" x 8'5"

Garden aspect. Worktop surfaces with inset Single drainer sink unit with mixer tap. Range of base level cupboards and drawers. Inset 4 ring hob with oven under and extractor over. Wall mounted gas fired boiler for heating and hot water. Double glazed window.

SHOWER ROOM

Opaque double glazed window. Suite comprising: Tiled shower cubicle with wall mounted shower and glass screen. Low level W.C. Wall mounted wash hand basin with cupboards under. Under floor heating.

MEZZANINE BEDROOM

13'2" x 13'0"

Garden aspect 'Velux' Windows. Eaves storage cupboard.

FRONT GARDEN

Mainly laid to lawn enclosed by fencing.

OFF STREET PARKING

Off street parking for 1 vehicle. Access to:

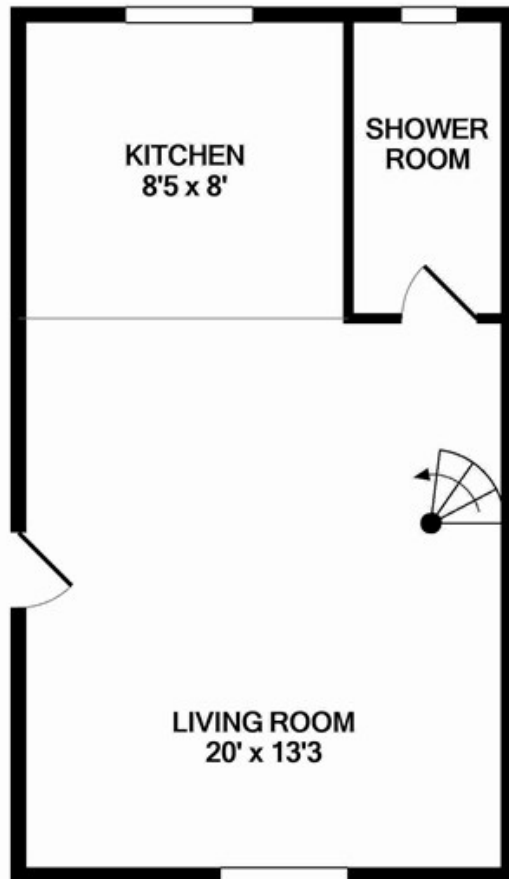
REAR GARDEN

Laid to lawn.

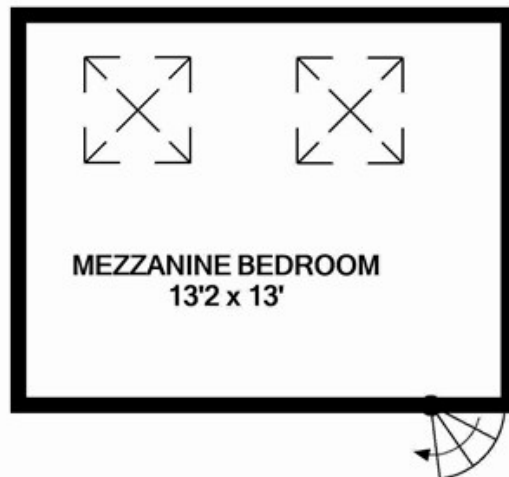


Energy Efficiency Rating		
	Current	Potential
Very energy efficient - lower running costs		
(92 plus) A		
(81-91) B		
(69-80) C		
(55-68) D		
(39-54) E		
(21-38) F		
(1-20) G		
Not energy efficient - higher running costs		
England & Wales		EU Directive 2002/91/EC

Environmental Impact (CO ₂) Rating		
	Current	Potential
Very environmentally friendly - lower CO ₂ emissions		
(92 plus) A		
(81-91) B		
(69-80) C		
(55-68) D		
(39-54) E		
(21-38) F		
(1-20) G		
Not environmentally friendly - higher CO ₂ emissions		
England & Wales		EU Directive 2002/91/EC



GROUND FLOOR



1ST FLOOR

Measurements are approximate. Not to scale. Illustrative purposes only
Made with Metropix ©2020

4 Flaxpits Lane
Winterbourne
Bristol
BS36 1JX

www.aj-homes.co.uk
info@aj-homes.co.uk
01454 252140

Agents Note: Whilst every care has been taken to prepare these sales particulars, they are for guidance purposes only. All measurements are approximate are for general guidance purposes only and whilst every care has been taken to ensure their accuracy, they should not be relied upon and potential buyers are advised to recheck the measurements