



17 Craven Road , Chesterfield, S41 7HJ

* Traditional Semi-Detached House * Two/Three Bedrooms * Lounge * Family Dining Kitchen with French Doors to Garden * Family Bathroom with White Suite * Gardens to Front & Rear * Highly Popular Residential Area * Close to Amenities & Facilities * Available Immediately

Semi-detached home offering quality accommodation available for a long term let (after an initial 6 month period). The property has well proportioned accommodation throughout comprising: reception hall, lounge and dining kitchen to the ground floor with two double bedrooms, box room and family bathroom to the first floor.

Gardens are positioned to both front and rear elevations and are of particularly good proportion.

The property also benefits from gas fired central heating, double glazed windows and doors and is available for immediate occupation.

£875 Per month

17 Craven Road

, Chesterfield, S41 7HJ



- Attractive Semi-Detached House
 - Lounge with Front Aspect
 - Re-Decorated Throughout
 - Available for Immediate Occupation
- Two/Three Bedrooms
 - Dining Kitchen with French Doors to Rear Garden
 - Newly Fitted Carpets
- First Floor Family Bathroom
 - Recently Refurbished
 - Double Glazed & Gas Central Heating

Ground Floor Accommodation

Reception Hall

Lounge

11'10" x 10'9" (3.61m x 3.29m)

Dining Kitchen

17'10" x 9'1" (5.46m x 2.78m)

First Floor Accommodation

Landing

Bedroom One

11'2" x 10'9" (3.41m x 3.28m)

Bedroom Two

11'4" x 9'1" (3.47m x 2.77m)

Boxroom

6'11" x 6'11" (2.13m x 2.11m)

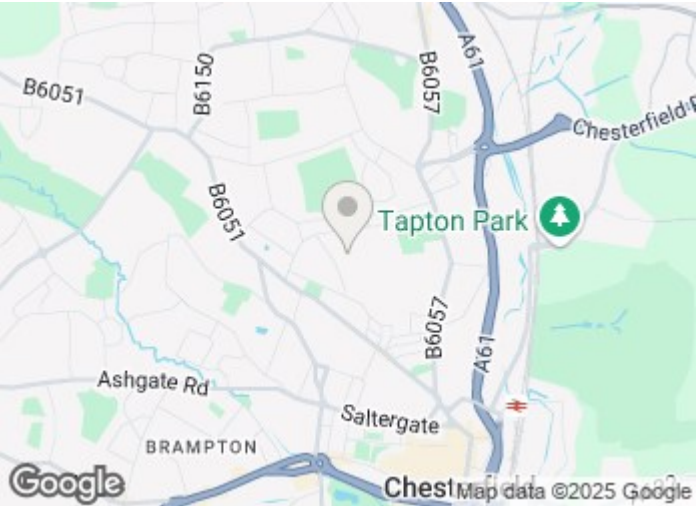
Bathroom/WC

Outside

Viewing

EPC Rating

Council Tax Banding



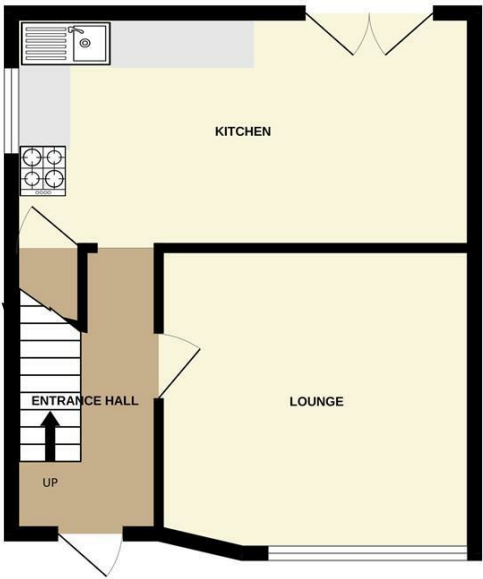
Directions



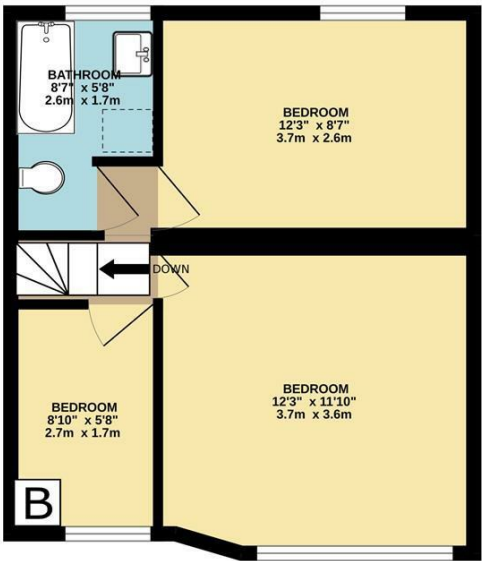


Floor Plan

GROUND FLOOR
369 sq.ft. (34.2 sq.m.) approx.



1ST FLOOR
362 sq.ft. (33.7 sq.m.) approx.



TOTAL FLOOR AREA : 731 sq.ft. (67.9 sq.m.) approx.
Whilst every attempt has been made to ensure the accuracy of the floorplan contained here, measurements of doors, windows, rooms and any other items are approximate and no responsibility is taken for any error, omission or mis-statement. This plan is for illustrative purposes only and should be used as such by any prospective purchaser. The services, systems and appliances shown have not been tested and no guarantee as to their operability or efficiency can be given.
Made with Metropix ©2022

These particulars, whilst believed to be accurate are set out as a general outline only for guidance and do not constitute any part of an offer or contract. Intending purchasers should not rely on them as statements of representation of fact, but must satisfy themselves by inspection or otherwise as to their accuracy. No person in this firms employment has the authority to make or give any representation or warranty in respect of the property.

