



## 35E Washington Road Goldthorpe, Barnsley, S63 9EF

\* Residential Development Portfolio \* Built Approx 4 Years Ago \* 5 x 2 Bedroomed Houses - 73.4sq.m. (790 sq.ft.) each \* Modern, Open Plan Living \* All Mains Services \* Gas Central Heating & Double Glazing \* All Properties Subject to Assured Shorthold Tenancies (Documents Available) \* Fully Let Income in the region of c.£28,650 pa \* Potential to Increase Income

A rare opportunity to acquire a development of 4 semi-detached houses plus 1 detached house currently producing £25,650 pa income (fully let income in the region of £28,650 pa) with the potential to increase to somewhere in the region of £30,000 pa subject to rent reviews.

\*\*PLEASE NOTE: There is also option to buy the full portfolio at offers in the region of £900,000\*\*

### Offers in the region of £450,000

# 35E Washington Road

Goldthorpe, Barnsley, S63 9EF



- INVESTMENT OPPORTUNITY • Portfolio of Family Homes
- Currently Let on Assured Shorthold Tenancy Agreements
- 10 Properties Available in Total

**Accommodation**

**Services**

**Council Tax**

**EPC Rating**

**Tenancy Information**

**Annual Income**

**Viewings**

**Important Note**

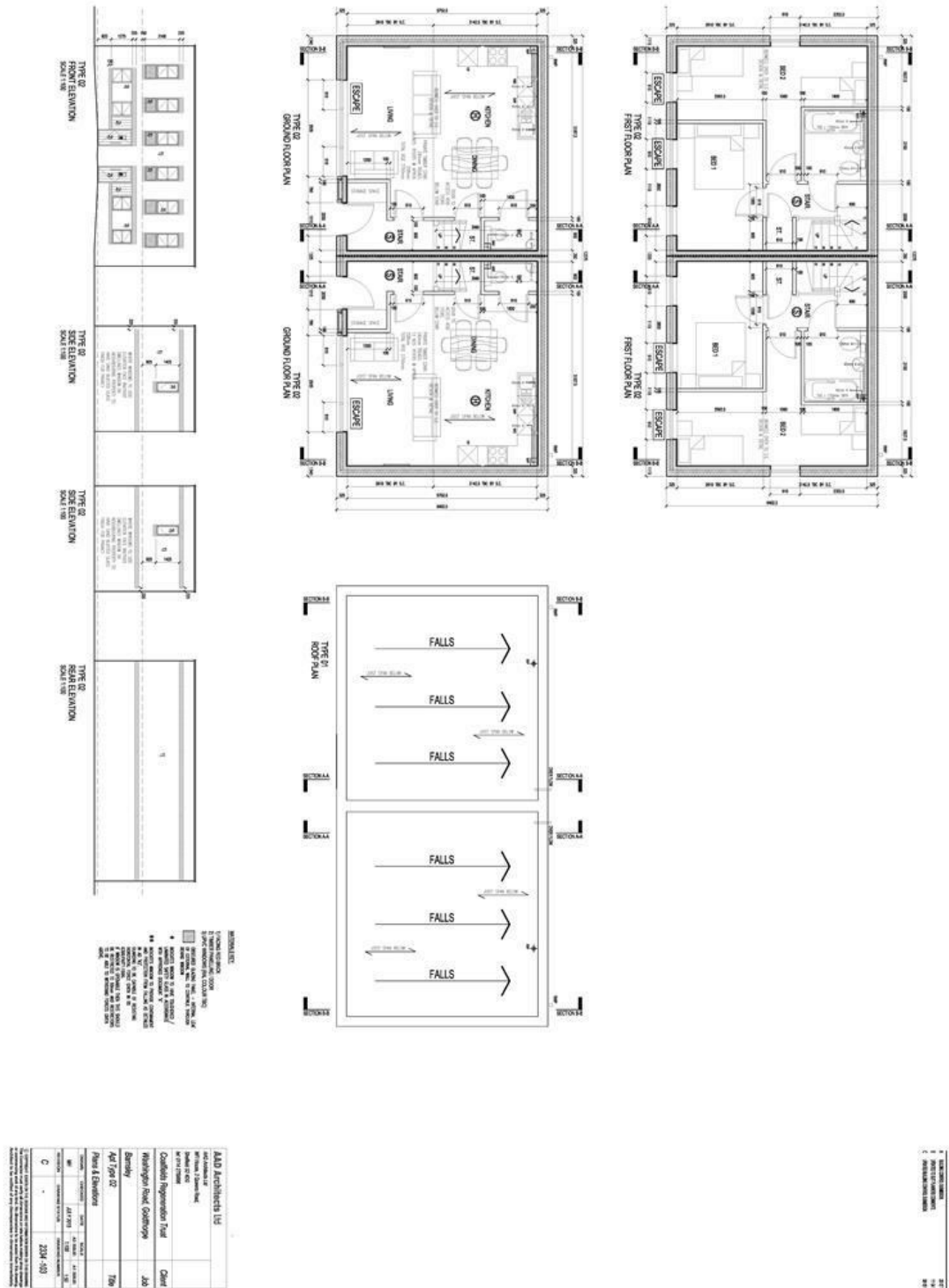


**Directions**





# Floor Plan



These particulars, whilst believed to be accurate are set out as a general outline only for guidance and do not constitute any part of an offer or contract. Intending purchasers should not rely on them as statements of representation of fact, but must satisfy themselves by inspection or otherwise as to their accuracy. No person in this firm's employment has the authority to make or give any representation or warranty in respect of the property.

4 Glumangate, Chesterfield, S40 1QA  
 Tel: 01246 232156 Email: residential@wtparker.com <https://www.wtparker.com/>

Energy Efficiency Rating		Current	Potential
Very energy efficient - lower running costs			
(92 plus) <b>A</b>			95
(81-91) <b>B</b>		82	
(69-80) <b>C</b>			
(55-68) <b>D</b>			
(39-54) <b>E</b>			
(21-38) <b>F</b>			
(1-20) <b>G</b>			
Not energy efficient - higher running costs			
<b>England &amp; Wales</b>	EU Directive 2002/91/EC		