



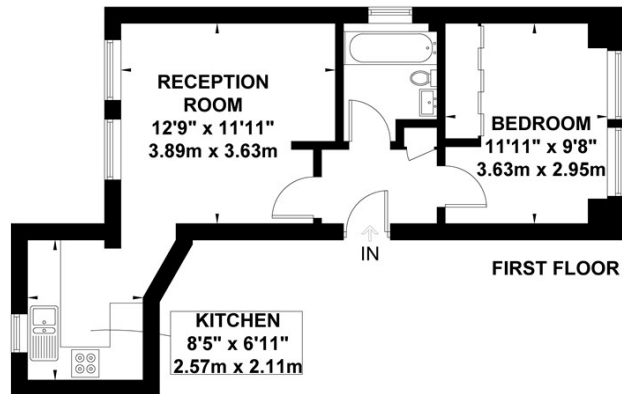
**37 OAKDALE ROAD**  
**WEYBRIDGE, KT13 8EJ**

**£1,175 PCM**

Ideally situated for easy access to the town centre is this one double bedroom first floor conversion apartment, offered unfurnished and available end of January

**BUTLERS**  
butlerspropertyonline.co.uk

**Flat 4, 37 Oakdale Road, Weybridge**  
Approximate Gross Internal Area = 38.2 sq m / 411 sq ft



Exposure House © 2020  
www.exposure.house

Whilst every attempt has been made to ensure the accuracy of this floor plan, measurements of doors, windows and rooms are approximate and no responsibility is taken for any error or omission. This illustration is for identification purposes only. Measured and drawn in accordance with RICS guidelines. Not drawn to scale, unless stated. Dimensions shown are to the nearest 2" and are to the points indicated by the arrow heads.



Energy Efficiency Rating		
	Current	Potential
Very energy efficient - lower running costs		
(92 plus) <b>A</b>		
(81-91) <b>B</b>		
(69-80) <b>C</b>		
(55-68) <b>D</b>		
(39-54) <b>E</b>		
(21-38) <b>F</b>		
(1-20) <b>G</b>		
Not energy efficient - higher running costs		
<b>England &amp; Wales</b>	EU Directive 2002/91/EC	

Agents Note: Whilst every care has been taken to prepare these particulars, they are for guidance purposes only. All measurements are approximate and are for general guidance purposes only and whilst every care has been taken to ensure their accuracy, they should not be relied upon and potential buyers/tenants are advised to recheck the measurements

Weybridge Lettings  
15 Church Street  
Weybridge  
Surrey  
KT13 8NA

01932 887760  
info@butlerspropertyonline.co.uk  
butlerspropertyonline.co.uk

**BUTLERS**  
butlerspropertyonline.co.uk