



## 11 WOODSOME LODGE

WEYBRIDGE, KT13 0DH

£1,695 PCM

Welcome to Woodsome Lodge in the charming town of Weybridge! This delightful apartment boasts 2 well apportioned bedrooms, perfect for a small family or those in need of a guest room or home office.

Situated in a prime location, this apartment offers a tranquil escape from the hustle and bustle of everyday life. The property is ideal for those seeking a peaceful retreat while still being close to local amenities.

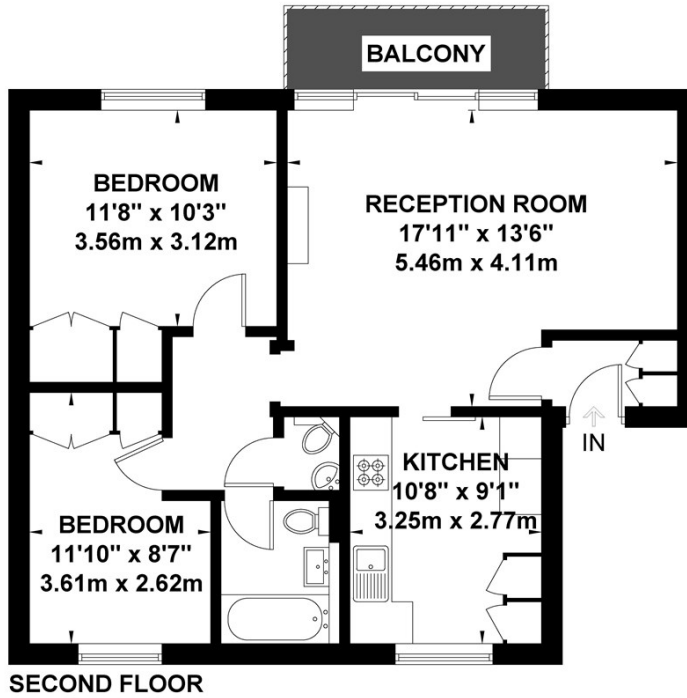
This apartment offers ample space for comfortable living. Whether you're looking to relax in the spacious living area or whip up a culinary masterpiece in the kitchen, this property has it all.

Don't miss out on the opportunity to make Woodsome Lodge your new home. Book a viewing today and experience the charm and convenience this apartment has to offer in the heart of Weybridge.

**BUTLERS**  
butlerspropertyonline.co.uk

## Woodsome Lodge, Weybridge

Approximate Gross Internal Area = 64.5 sq m / 694 sq ft



Exposure House © 2019  
www.exposurehouse.co.uk

Whilst every attempt has been made to ensure the accuracy of this floor plan, measurements of doors, windows and rooms are approximate and no responsibility is taken for any error or omission. This illustration is for identification purpose only. Measured and drawn accordance with RICS guidelines. Not drawn to scale, unless stated. Dimensions shown are to the nearest 3" and are to the points indicated by the arrow heads.



Energy Efficiency Rating		
	Current	Potential
Very energy efficient - lower running costs		
(92 plus) <b>A</b>		
(81-91) <b>B</b>		
(69-80) <b>C</b>		
(55-68) <b>D</b>		
(39-54) <b>E</b>		
(21-38) <b>F</b>		
(1-20) <b>G</b>		
Not energy efficient - higher running costs		
<b>England &amp; Wales</b>	EU Directive 2002/91/EC	

Agents Note: Whilst every care has been taken to prepare these particulars, they are for guidance purposes only. All measurements are approximate and are for general guidance purposes only and whilst every care has been taken to ensure their accuracy, they should not be relied upon and potential buyers/tenants are advised to recheck the measurements

Weybridge Lettings  
15 Church Street  
Weybridge  
Surrey  
KT13 8NA

01932 887760  
info@butlerspropertyonline.co.uk  
butlerspropertyonline.co.uk

**BUTLERS**  
butlerspropertyonline.co.uk