



TAYLOR GIBBS

Residential Sales, Lettings & Management Agents

Hornsey Lane, Highgate, N6
Price £2,500 pcm - To Let

A very spacious two double bedroom top floor flat boasting sole use of a large south roof terrace with panoramic views across central London and the Olympic Village situated within walking distance to both Crouch End Broadway and Highgate Village. The accommodation comprises of a reception room open plan to a kitchen, bathroom and two equally proportioned double bedrooms. There is also one off street parking space on a first come first served basis. The property is conveniently located within close proximity to both Highgate and Archway Underground Station.

Material Information:

The property has gas central heating and fibre broadband is available. The building is serviced by electricity, mains water and sewerage and mobile phone coverage is available. There is off street parking on a first come first served basis and CPZ street parking is available on the surrounding roads with parking restrictions between 10:00 - 14:00, Monday to Friday.

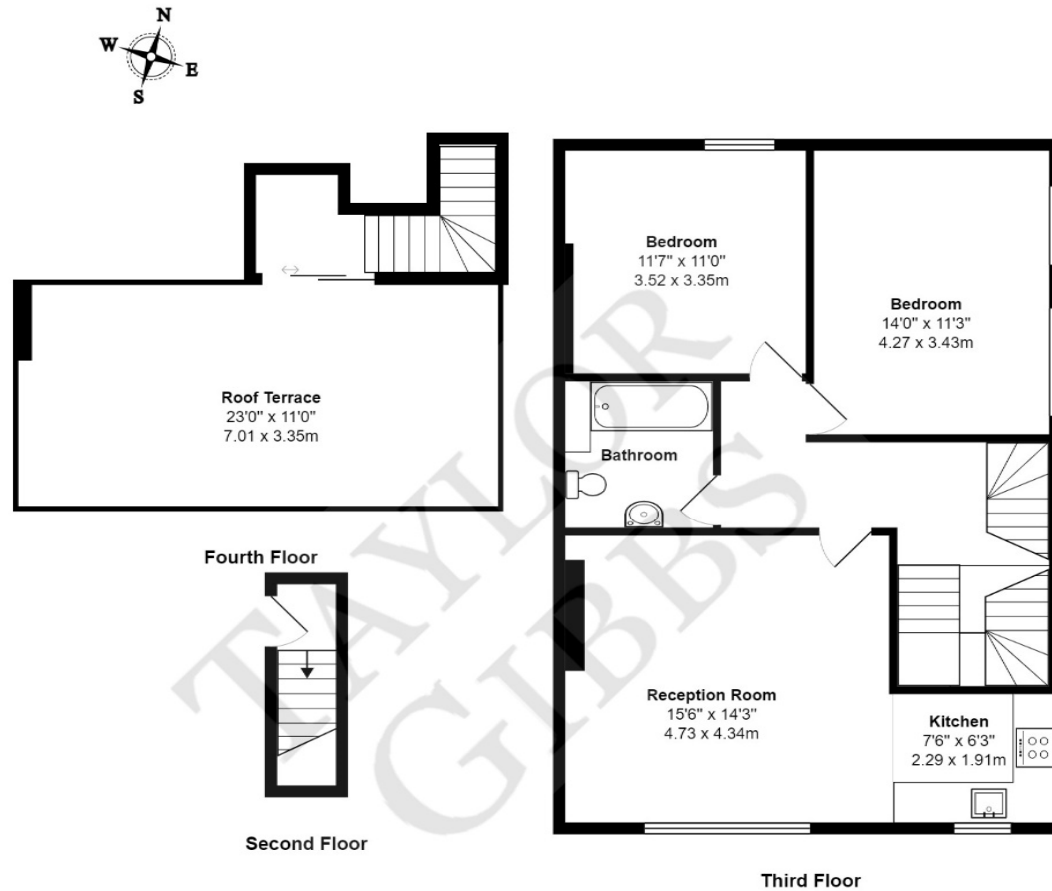
Please note that £2,500 per calendar month is the equivalent of £576.2 per week

Council Tax: Haringey Band E

Tenancy Term: 12 months

Approx. Floor Area: 800 sqft (74.32 sqm)





Hornsey Lane N6
Total Area: 800 ft² ... 74.3 m²

Energy Efficiency Rating		
	Current	Potential
Very energy efficient - lower running costs		
(92-100) A		
(81-91) B		
(69-80) C		
(55-68) D		
(39-54) E		
(21-38) F		
(1-20) G		
Not energy efficient - higher running costs		
England & Wales	EU Directive 2002/91/EC	



