



TAYLOR GIBBS

Residential Sales, Lettings & Management Agents

Milton Park, Highgate, N6
Price £450 pw - To Let

A split level two bedroom raised ground floor period conversion within close walking distance of Highgate Underground Station. Boasting bright and spacious living accommodation throughout, the property comprises a south facing reception room open plan to the kitchen, two double bedrooms, modern bathroom and a separate WC. The property has an abundance of period features that include traditional cornicing and sash windows, fitted wardrobes to both bedrooms and a beautiful rear outlook across Parkland Walk. Milton Park is located within walking distance to the array of amenities of both Highgate Village and Crouch End Broadway as well as the leafy surroundings of Highgate Woods and Queens Wood.

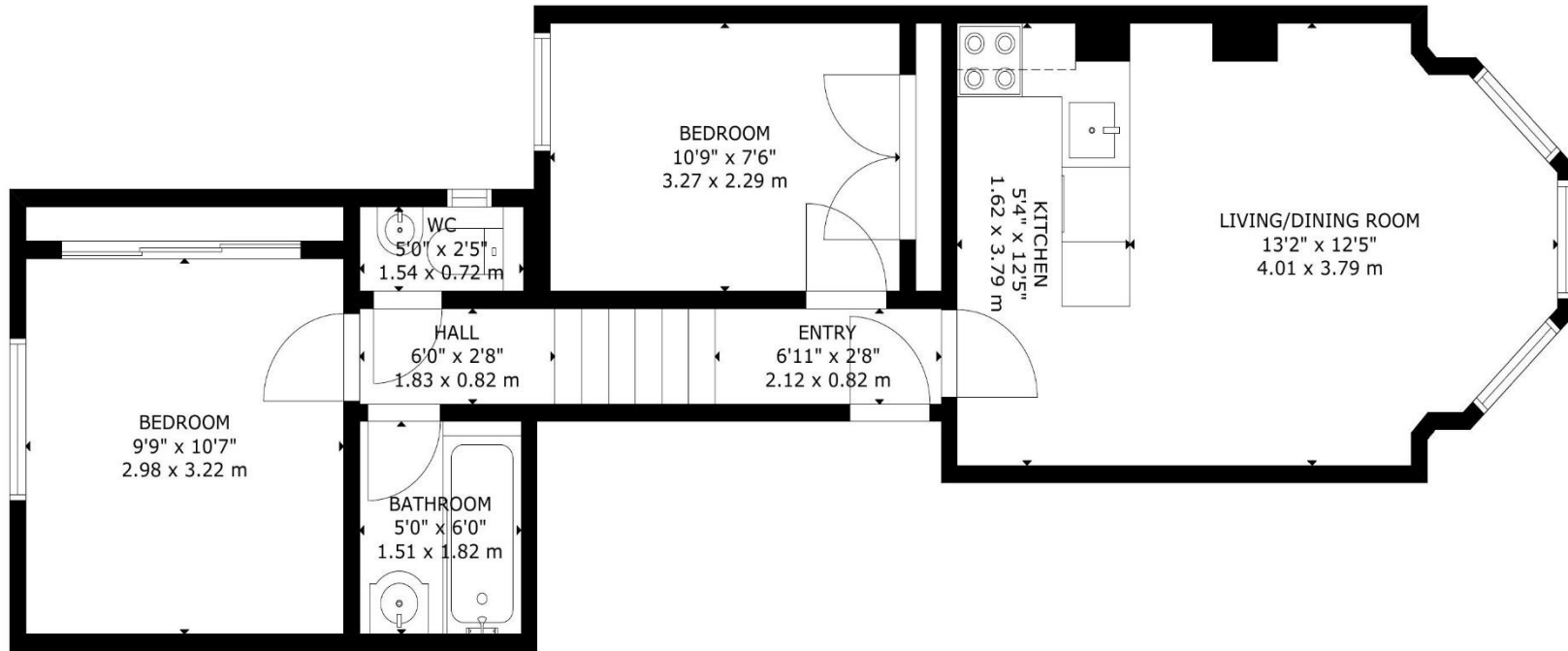
Please note that £450 per week is the equivalent of £1,950 per calendar month

Council Tax: Haringey Band D

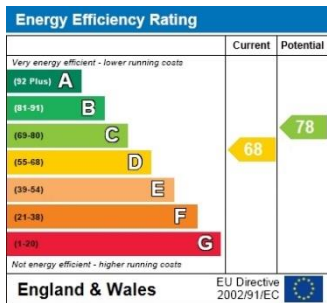
Tenancy Term: 12 months

Approx. Floor Area: 530 sqft (49.24 sqm)





GROSS INTERNAL AREA
 TOTAL: 49 m²/530 sq.ft
 FIRST FLOOR: 49 m²/530 sq.ft
 SIZE AND DIMENSIONS ARE APPROXIMATE, ACTUAL MAY VARY



TAYLOR GIBBS

Residential Sales, Lettings & Management Agents

33 Highgate High Street, Highgate, London, N6 5JT
 Tel: 020 8341 0123
 enquiries@taylorgibbs.co.uk
 www.taylorgibbs.co.uk

