



TAYLOR GIBBS
Residential Sales, Lettings & Management Agents

Bloomfield Road, Highgate, N6
Price £1,442 pw - To Let

A recently refurbished and extremely spacious three bedroom apartment with a private garden and its own entrance situated on one of Highgate`s most sought after roads within close walking distance to Highgate Village. Flooded in natural light, the accommodation comprises a large reception room opening onto a modern fully fitted kitchen with floor to ceiling windows and doors, three double bedrooms, the master benefiting from a walk in wardrobe and en-suite shower room, utility room, study and a further shower room. Further benefits include wooden floors throughout, built in wardrobes to all bedrooms and a low maintenance rear garden. The property is conveniently located only moments away from Highgate Underground Station and within easy reach of Highgate Wood and Waterlow Park.

Please note that £6,250 per calendar month is the equivalent of £1,442.30p per week

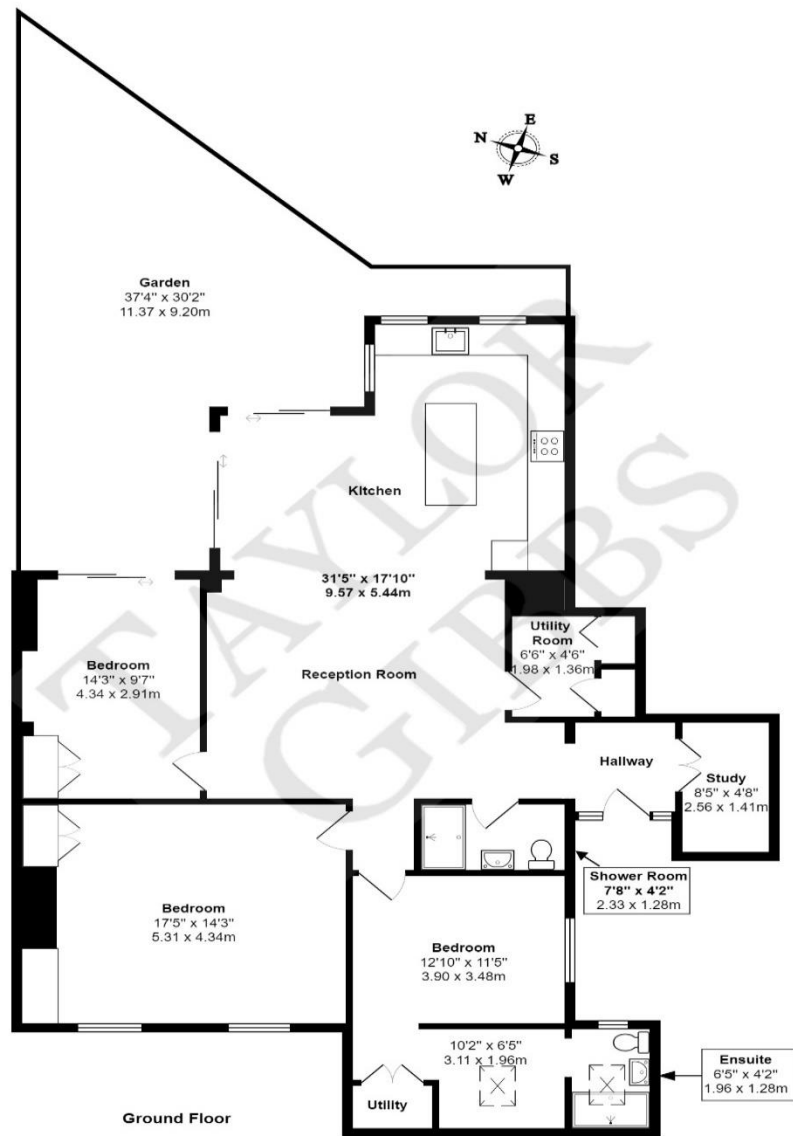
Council Tax: Haringey Band E

Tenancy Term: 12 months or longer



TAYLOR GIBBS

Residential Sales, Lettings & Management Agents



Bloomfield Road N6
 Total Area: 1296 ft² ... 120.4 m²
 All measurements are approximate and for display purposes only

Energy Efficiency Rating		Current	Potential
<i>Very energy efficient - lower running costs</i>			
(92 Plus) A			
(81-91) B			
(69-80) C		75	80
(55-68) D			
(39-54) E			
(21-38) F			
(1-20) G			
<i>Not energy efficient - higher running costs</i>			
England & Wales	EU Directive 2002/91/EC		



