



# TAYLOR GIBBS

Residential Sales, Lettings & Management Agents

Croftdown Road, Dartmouth Park, NW5  
Price £3,500 pcm - To Let



A three/four bedroom split level apartment occupying the top two floors of this period conversion located only moments away from Parliament Hill and Hampstead Heath. Boasting a south facing balcony and stunning views across central London, the accommodation comprises of a spacious reception room, separate kitchen, two double bedrooms, the master benefiting from an en-suite shower room, two single bedrooms or studies and a luxurious bathroom. The property is conveniently situated within close walking distance to restaurants, cafes and bars of both Swains Lane and Highgate Village along with the nearby transport links to central London.

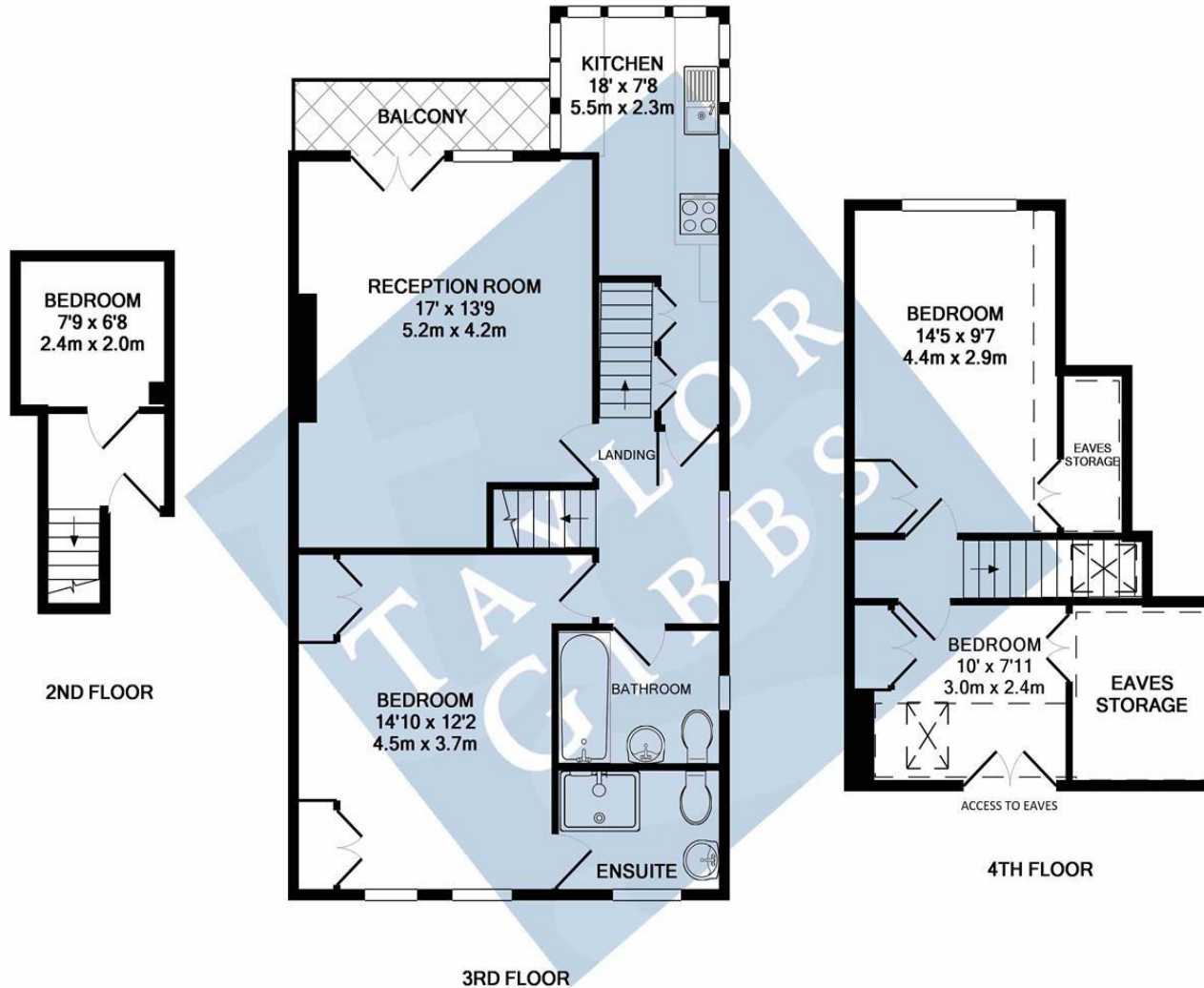
Please note that £3,500 per calendar month is the equivalent of £807.69 per week

Council Tax: Camden Band E

Tenancy Term: 2 years minimum

Approx. Floor Area: 1147 sqft (106.56 sqm)





CROFTDOWN ROAD NW5  
 TOTAL APPROX. FLOOR AREA 1147 SQ.FT. (106.6 SQ.M.)

Energy Efficiency Rating		Current	Potential
<i>Very energy efficient - lower running costs</i>			
(92 Plus)	<b>A</b>		
(81-91)	<b>B</b>		
(69-80)	<b>C</b>		73
(55-68)	<b>D</b>	55	
(39-54)	<b>E</b>		
(21-38)	<b>F</b>		
(1-20)	<b>G</b>		
<i>Not energy efficient - higher running costs</i>			
England & Wales		EU Directive 2002/91/EC	



# TAYLOR GIBBS

Residential Sales, Lettings & Management Agents

33 Highgate High Street, Highgate, London, N6 5JT  
 Tel: 020 8341 0123  
 enquiries@taylorgibbs.co.uk  
 www.taylorgibbs.co.uk



