



TAYLOR GIBBS

Residential Sales, Lettings & Management Agents

Hampstead Lane, Highgate, N6
Price £1,100,000 - Share of Freehold

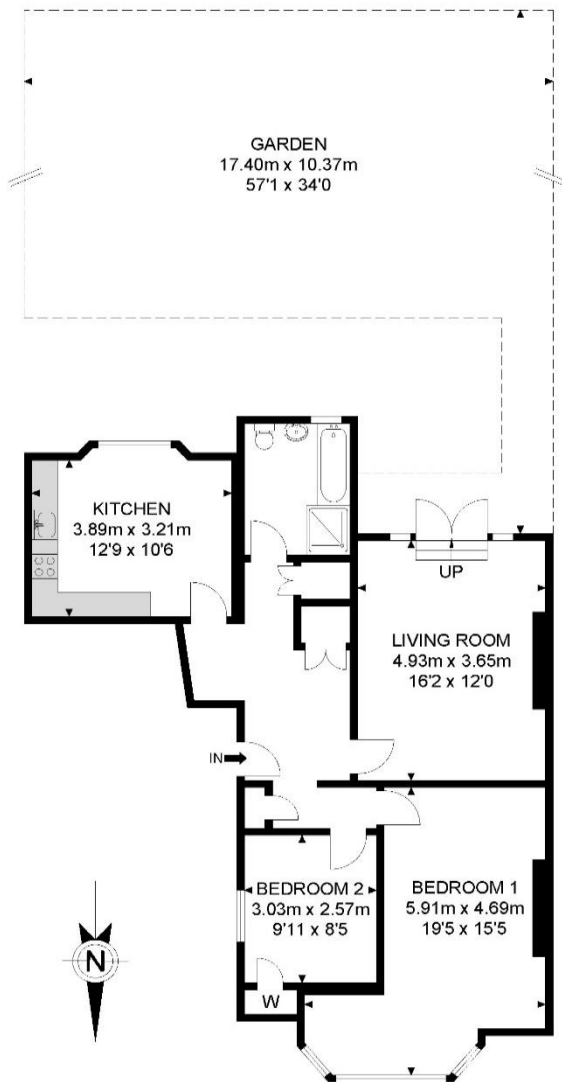
A stunning two bedroom ground floor period conversion with a private garden and off street parking situated in the heart of Highgate Village. Boasting an array of period features throughout, the accommodation comprises a spacious entrance hallway, large bright reception room, fitted kitchen with space for dining, two bedrooms and a bathroom with separate shower cubicle. Externally there is a beautifully maintained south facing garden accessed from the reception room and off street parking for one car. The property is ideally located within walking distance of Highgate Underground Station and only moments away from the picturesque surroundings of Kenwood House and Hampstead Heath.

Council Tax: London Borough Of Camden - Band E
Approx. Floor Area: 881 sqft (81.85 sqm)
Remaining Lease Term: 161 years
Annual Service Charge: £780



TAYLOR GIBBS

Residential Sales, Lettings & Management Agents



Ground Floor



APPROX. GROSS INTERNAL FLOOR AREA 881.56 SQ FT / 81.90 SQM

Whilst every attempt has been made to ensure the accuracy of the floor plan contained here, measurements of doors, windows, rooms and any other items are approximated and no responsibility is taken for any error, omission or mis-statement. This plan is for illustrative purposes only and should be used as such by any prospective purchaser. The service, system and appliances shown have not been tested and no guarantee as to their operability or efficiency can be given.

© SpacePhoto

Photography and Floor Plan

Energy Efficiency Rating		Current	Potential
<i>Very energy efficient - lower running costs</i>			
(92 Plus) A			
(81-91) B			
(69-80) C			
(55-68) D		64	78
(39-54) E			
(21-38) F			
(1-20) G			
<i>Not energy efficient - higher running costs</i>			
England & Wales	EU Directive 2002/91/EC		



