



Ladycroft Road, SE13

£2,400 Per calendar month

A mid terrace house on a quiet residential street perfect for a family. On the ground floor, a spacious reception and a separate eat-in kitchen that leads to a private terrace and garden with under stairs storage. Upstairs are two double bedrooms, a family bathroom and a study.

Ladycroft Road is conveniently located for Lewisham station and DLR, offering an array of shops, restaurants and other amenities nearby as well as Hilly Fields.

Features

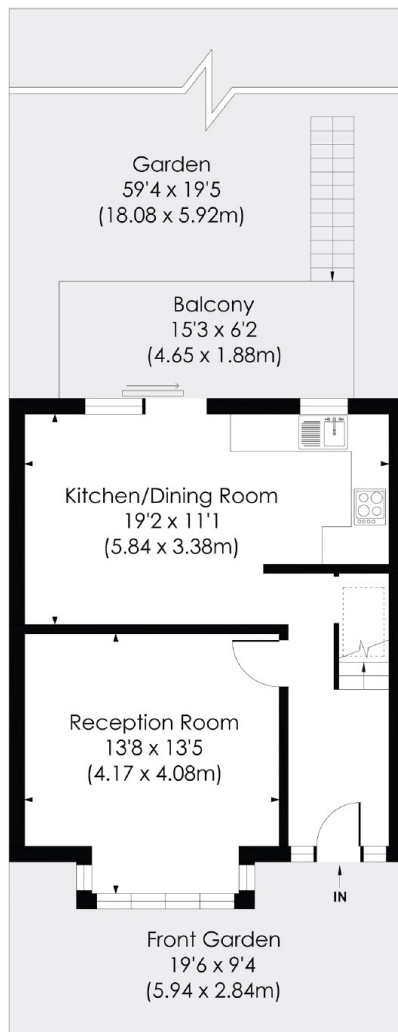
NO LICENCE

- Two Double Bedrooms
- Separate Study
- One Bathroom
- Large Reception
- Eat-In Kitchen
- Quiet Residential Road

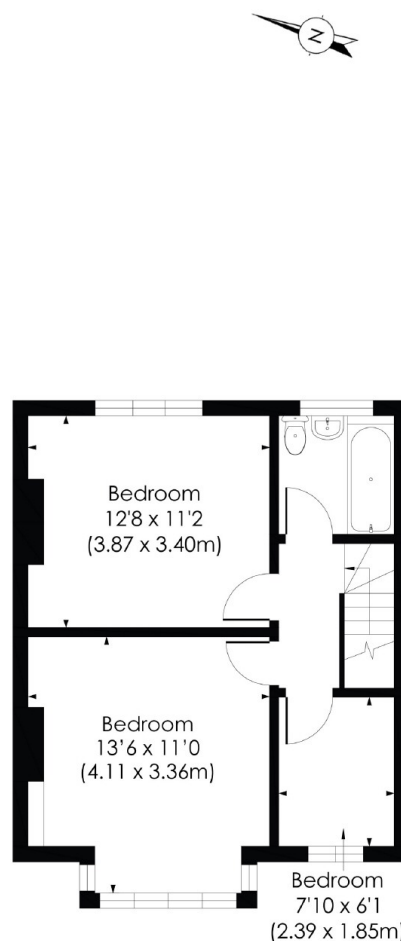
Ladycroft Road, London, SE13

LADYCROFT ROAD, SE13

Approx. Gross Internal Floor Area
911 Sq. ft/84.64 Sq. m



GROUND FLOOR



FIRST FLOOR

pixangle
PROPERTY MARKETING

This floor plan has been prepared for the purpose of illustration only in accordance with the latest RICS code of measuring practice and is not to scale. All measurements and areas are approximate and whilst every effort has been made to ensure the accuracy of the plan contained here, no responsibility is taken for any error, omission or misstatement.

© Pixangle Property Marketing Ltd. info@pixangle.com Tel: 0208 870 2118

Dexters

Lewisham
228 Algernon Road
London
SE13 7AG
Lettings
0208 690 8020

Energy Rating: C. We aim to make our particulars both accurate and reliable. However they are not guaranteed; nor do they form part of an offer or contract. If you require clarification on any points then please contact us, especially if you're traveling some distance to view. Please note that appliances and heating systems have not been tested and therefore no warranties can be given as to their good working order.

RICS | Regulated
Estate Agent
and Letting Agent

dexters.co.uk