



Chalsey Road, SE4

£2,500 Per calendar month

A spacious three bedroom split level apartment with a garden located on Chalsey Road, seconds away from Hilly Fields Park! Within easy walking distance to Brockley and Crofton Park stations.

Just a stones throw from Brockley Overground Station (10 minute walk), this place has the luxury of being on a quiet residential street, but also with great access to local restaurants, bars and parks.

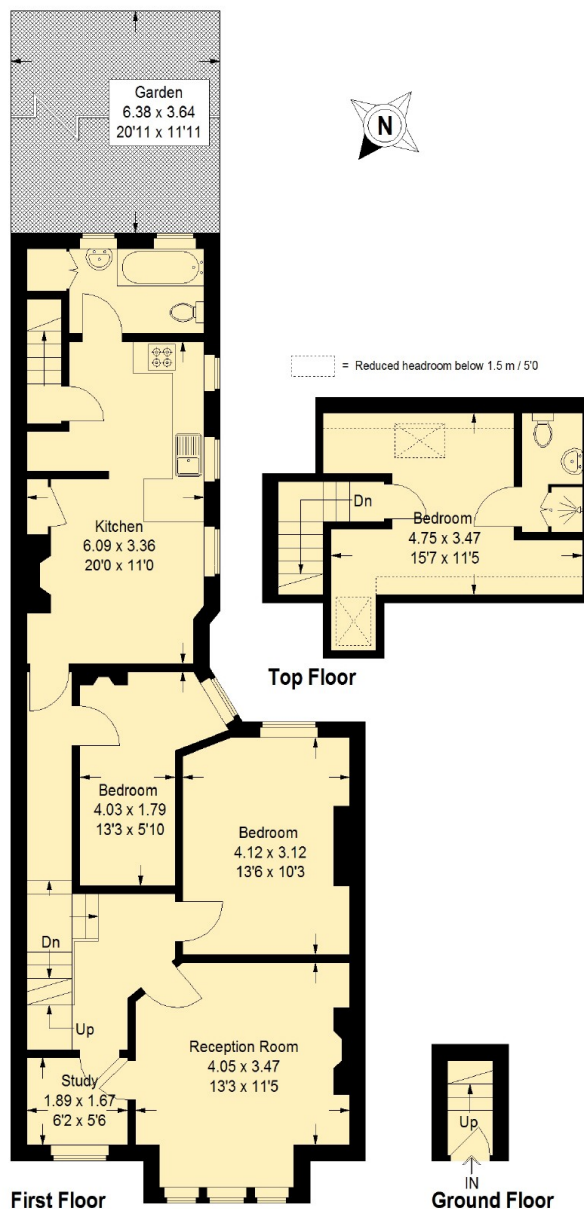
Features

- Three Bedroom Maisonette
- Two Bathrooms
- Private Garden
- Brockley Conservation
- Close To BR Stations
- Plenty Of Storage

Chalsey Road, , SE4

Chalsey Road SE4

Approximate Gross Internal Area
Ground Floor = 15 sq m / 16 sq ft
First Floor = 80.0 sq m / 861 sq ft
Top Floor = 19.6 sq m / 211 sq ft
Total = 101.1 sq m / 1088 sq ft



This plan is for layout guidance only. Not drawn to scale unless stated.
Windows and door openings are approximate. Whilst every care is taken
in the preparation of this plan, please check all dimensions, shapes and
compass bearings before making any decisions reliant upon them. (ID781750)

Dexters

Lewisham
228 Algernon Road
London
SE13 7AG
Lettings
0208 690 8020

Energy Rating: E. We aim to make our particulars both accurate and reliable. However they are not guaranteed; nor do they form part of an offer or contract. If you require clarification on any points then please contact us, especially if you're traveling some distance to view. Please note that appliances and heating systems have not been tested and therefore no warranties can be given as to their good working order.

 **RICS** | Regulated
Estate Agent
and Letting Agent

dexters.co.uk