



Wisteria Road, SE13

£1,550 Per calendar month

A one bedroom raised ground floor Victorian apartment conveniently situated between Lewisham and Hither Green stations.

Wisteria Road is located in Hither Green, an exciting and fast-developing area that borders Blackheath and Lewisham. The nearest station is Hither Green with services direct to London Bridge, Charing Cross and Canon Street. Lewisham station is also within easy reach where you can also pick up the DLR for connections to Canary Wharf and Bank

Features

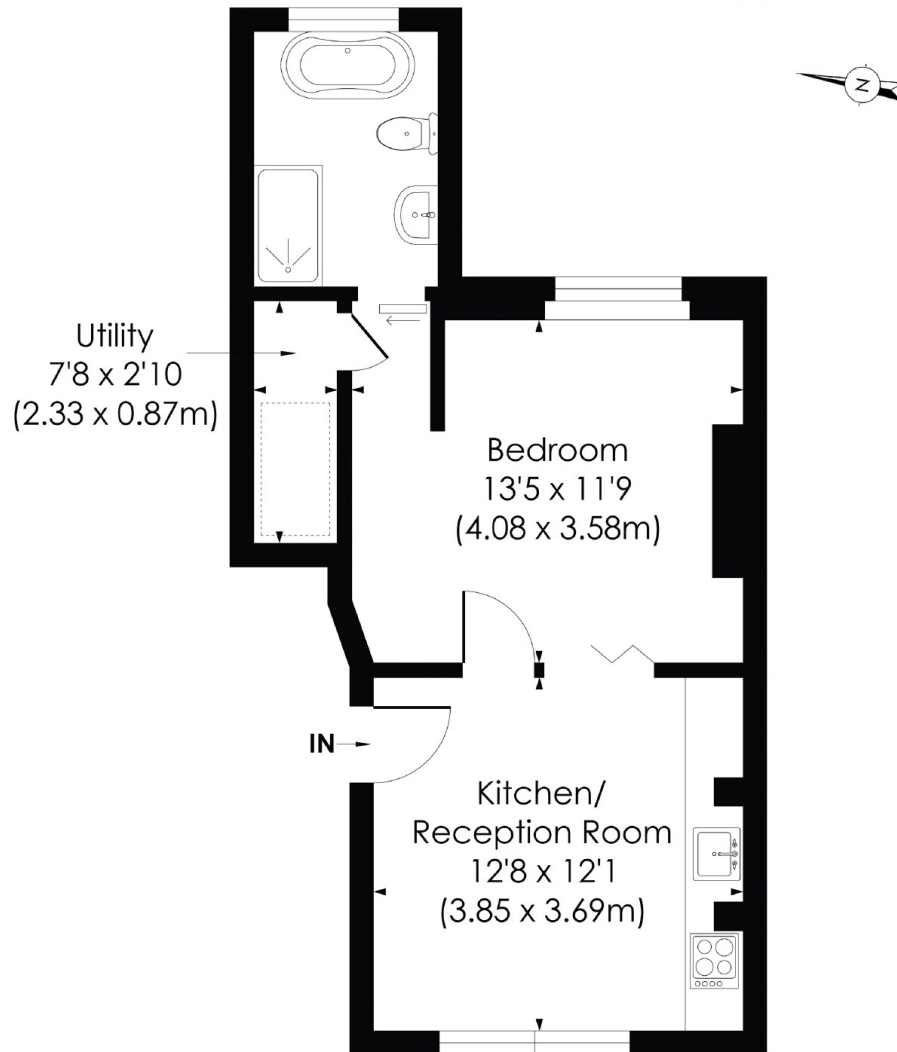
- One Bedroom
- Victorian
- Fitted Kitchen
- Double Bedroom
- Excellent Location

Wisteria Road, London, SE13

WISTERIA ROAD, SE13

Approx. Gross Internal Floor Area

403 Sq. ft/37.47 Sq. m



GROUND FLOOR

© Pixangle Property Marketing Ltd. info@pixangle.com Tel: 0208 870 2118

pixangle
PROPERTY MARKETING

This floor plan has been prepared for the purpose of illustration only in accordance with the latest RICS code of measuring practice and is not to scale. All measurements and areas are approximate and whilst every effort has been made to ensure the accuracy of the plan contained here, no responsibility is taken for any error, omission or misstatement.

Dexters

Lewisham
228 Algernon Road
London
SE13 7AG
Lettings
0208 690 8020

Energy Rating: C. We aim to make our particulars both accurate and reliable. However they are not guaranteed; nor do they form part of an offer or contract. If you require clarification on any points then please contact us, especially if you're traveling some distance to view. Please note that appliances and heating systems have not been tested and therefore no warranties can be given as to their good working order.

 **RICS** | Regulated
Estate Agent
and Letting Agent

dexters.co.uk