



Knowles Hill Crescent, SE13

£1,200 Per calendar month

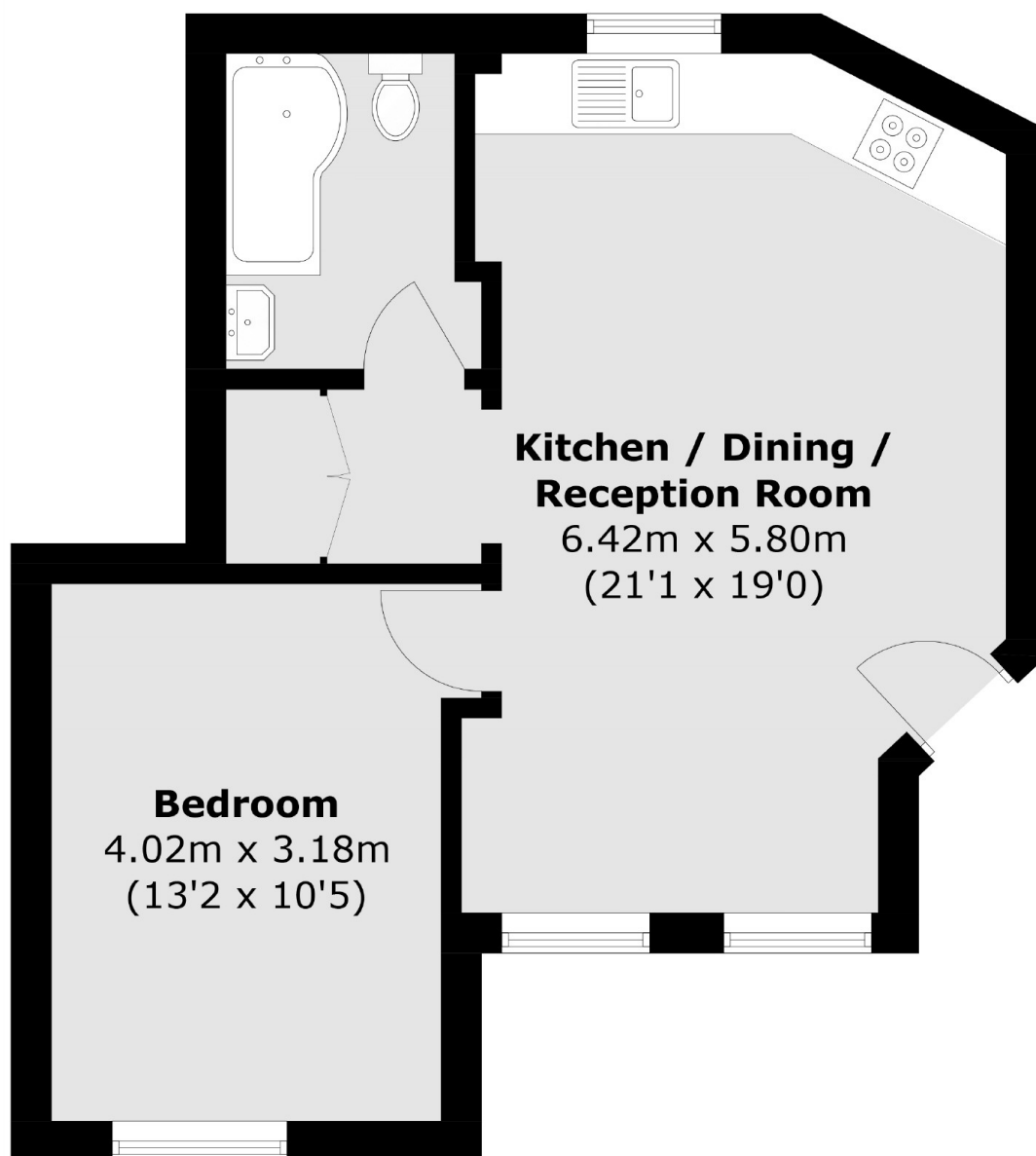
A well presented one bedroom ground floor flat offering secure courtyard parking via electronic gates just 0.4 miles to Hither Green station.

Within the Hither green area, you are presented with a huge array of day to day amenities, such as the local boutique shops and plenty of open green spaces.

Features

Available September
One Bedroom
Ground Floor
Unfurnished
Open Plan
EPC Rating C

Knowles Hill Crescent, London, SE13



Total area (approx.): 42.9 sq. m (461.8 sq. ft)

Dexters

Ladywell
44 Ladywell Road
London
SE13 7UZ
Lettings
0208 690 8020

Energy Rating: C. We aim to make our particulars both accurate and reliable. However they are not guaranteed; nor do they form part of an offer or contract. If you require clarification on any points then please contact us, especially if you're traveling some distance to view. Please note that appliances and heating systems have not been tested and therefore no warranties can be given as to their good working order.

 **RICS** | Regulated
Estate Agent
and Letting Agent

[dexters.co.uk](https://www.dexters.co.uk)