



Woodland Mews, SE13

£2,300 Per calendar month

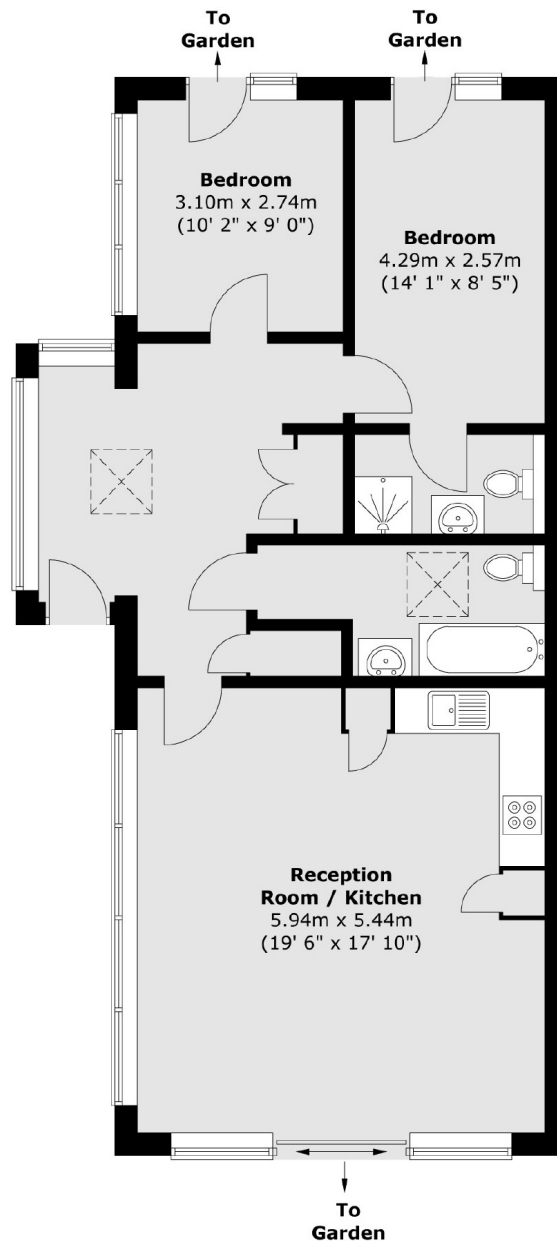
A newly refurbished two double bedroom house located in a secure gated development. Including a modern finish throughout, ample storage, an allocated parking space and a private front and rear garden.

Situated in Woodland Mews, you are within walking distance to Lewisham Station as well as Lewisham High Street and all the amenities that it has to offer.

Features

- Modern Bungalow
- Two Double Bedrooms
- Two Bathrooms
- Gated Development
- Allocated Parking Space
- Private Garden

Woodland Mews, London, SE13



Total area (approx.) : 80 sq. m (861 sq. ft)

Dexters

Lewisham
228 Algernon Road
London
SE13 7AG
Lettings
0208 690 8020

Energy Rating: B. We aim to make our particulars both accurate and reliable. However they are not guaranteed; nor do they form part of an offer or contract. If you require clarification on any points then please contact us, especially if you're traveling some distance to view. Please note that appliances and heating systems have not been tested and therefore no warranties can be given as to their good working order.

 **RICS** | Regulated
Estate Agent
and Letting Agent

[dexters.co.uk](https://www.dexters.co.uk)