

## Elmira Street, SE13

£1,950 Per calendar month

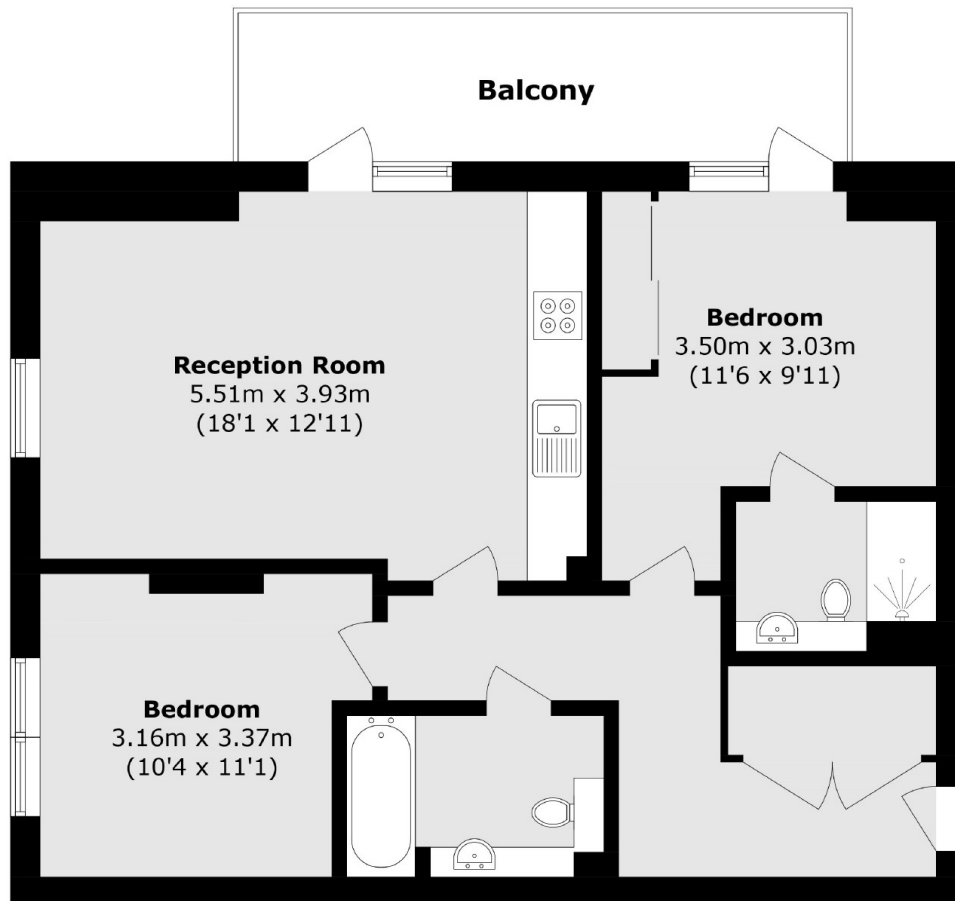
A luxury two bedroom apartment located in this impressive development comprising two large double bedrooms, open plan kitchen / reception, two modern bathrooms and a private balcony.

The property is located moments from Lewisham mainline and DLR stations providing quick and easy access into central London and Canary Wharf. A wide range of amenities can be found in the centre of Lewisham.

### Features

- Two Double Bedrooms
- Two Bathrooms
- Open Plan Kitchen/Reception
- Private Balcony
- 24 Hour Concierge
- Close To Transport Links

Elmira Street,  
London, SE13



Total area (approx.): 62.4 sq. m (671.6 sq. ft)  
Blacony area (approx.): 9.2 sq. m (99 sq. ft)

**Dexters**

Lewisham  
228 Algernon Road  
London  
SE13 7AG  
Lettings  
0208 690 8020

Energy Rating: B. We aim to make our particulars both accurate and reliable. However they are not guaranteed; nor do they form part of an offer or contract. If you require clarification on any points then please contact us, especially if you're traveling some distance to view. Please note that appliances and heating systems have not been tested and therefore no warranties can be given as to their good working order.

 **RICS** | Regulated  
Estate Agent  
and Letting Agent

[dexters.co.uk](https://www.dexters.co.uk)