



Hayward Mews, SE4

£3,200 Per calendar month

Dexters



Hayward Mews, SE4

A stunning three double bedroom modern house situated within a gated development in excellent condition including an open plan lounge/ kitchen, two bathrooms, separate WC and private rear garden. The property also benefits from solar panels supporting its energy efficiency.

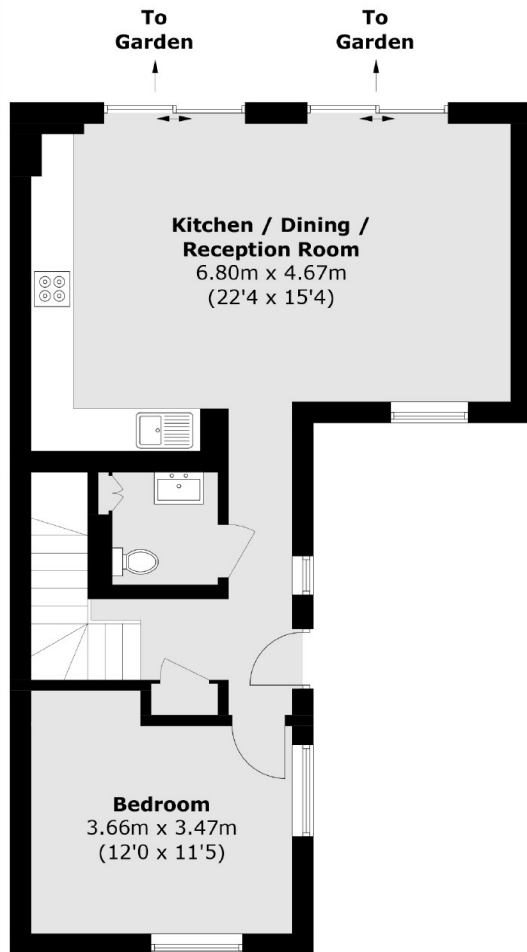
Hayward Mews is a stone's throw away from Crofton Park Station with a walkway which leads you to the entrance to the station and close to the various cafés, restaurants and bars that Crofton Park has to offer.

Features

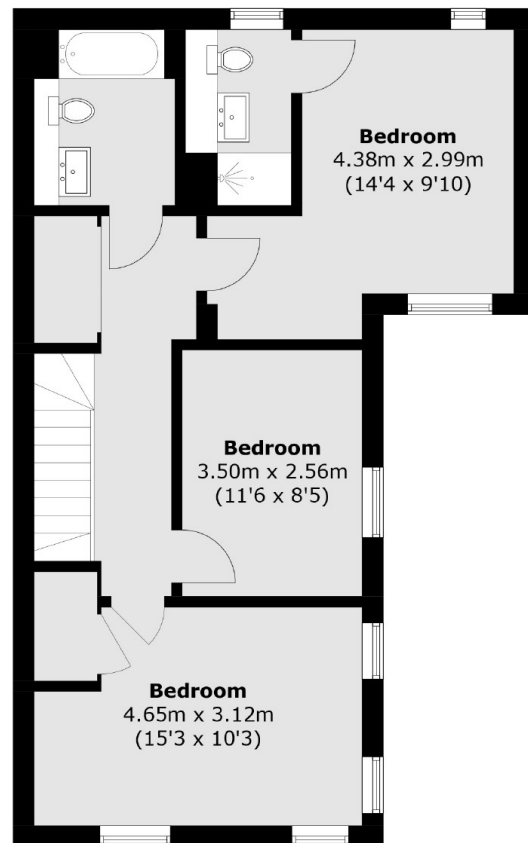
- Modern House
- Three Double Bedrooms
- Driveway
- Private Rear Garden
- Gated Development
- Close To Transport



Hayward Mews, London, SE4



Ground Floor



First Floor

Total area (approx.): 116.1 sq. m (1,249.7 sq. ft)