



## Undercliff Road, SE13

£1,700 Per calendar month

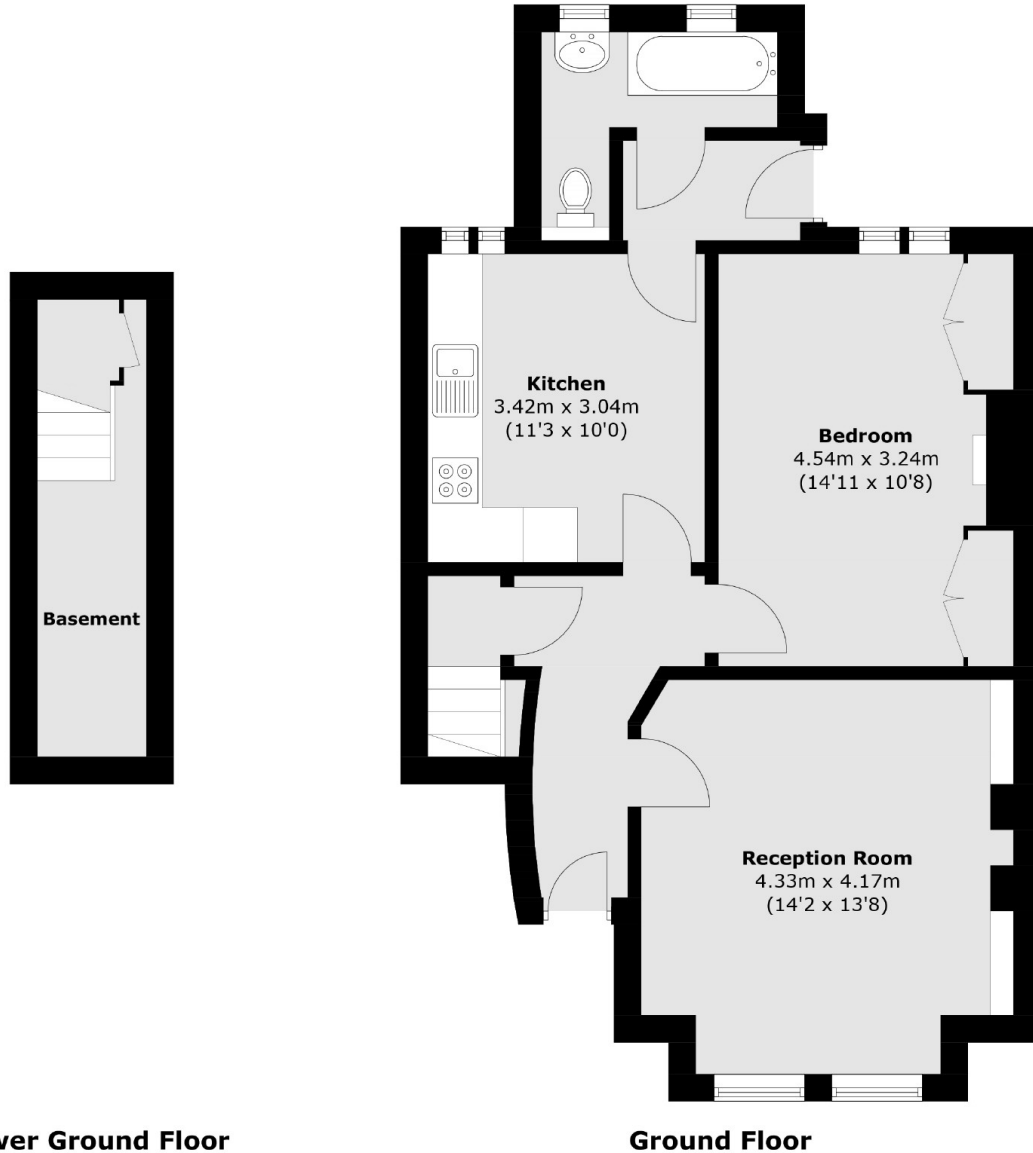
A one double bedroom ground floor Victorian conversion with direct access to a private rear garden. The property offers a bright and spacious reception and modern fitted eat-in kitchen.

Undercliff Road is located close to Lewisham mainline and DLR stations. Mainline services take you into London Bridge, Charing Cross and Cannon St whilst the DLR provides quick and easy access into Canary Wharf.

### Features

- One Double Bedroom
- Private Rear Garden
- Eat-In Kitchen
- Close To Station
- Gas Central Heating
- Excellent Location

# Undercliff Road, London, SE13



**Lower Ground Floor**

**Ground Floor**

Total area (approx.): 64.1 sq. m (690 sq. ft)  
(Including Basement)

## Dexters

Lewisham  
228 Algernon Road  
London  
SE13 7AG  
Lettings  
0208 690 8020

Energy Rating: C. We aim to make our particulars both accurate and reliable. However they are not guaranteed; nor do they form part of an offer or contract. If you require clarification on any points then please contact us, especially if you're traveling some distance to view. Please note that appliances and heating systems have not been tested and therefore no warranties can be given as to their good working order.

 **RICS** | Regulated  
Estate Agent  
and Letting Agent

[dexters.co.uk](http://dexters.co.uk)