



Brockley Road, SE4

£2,250 Per calendar month

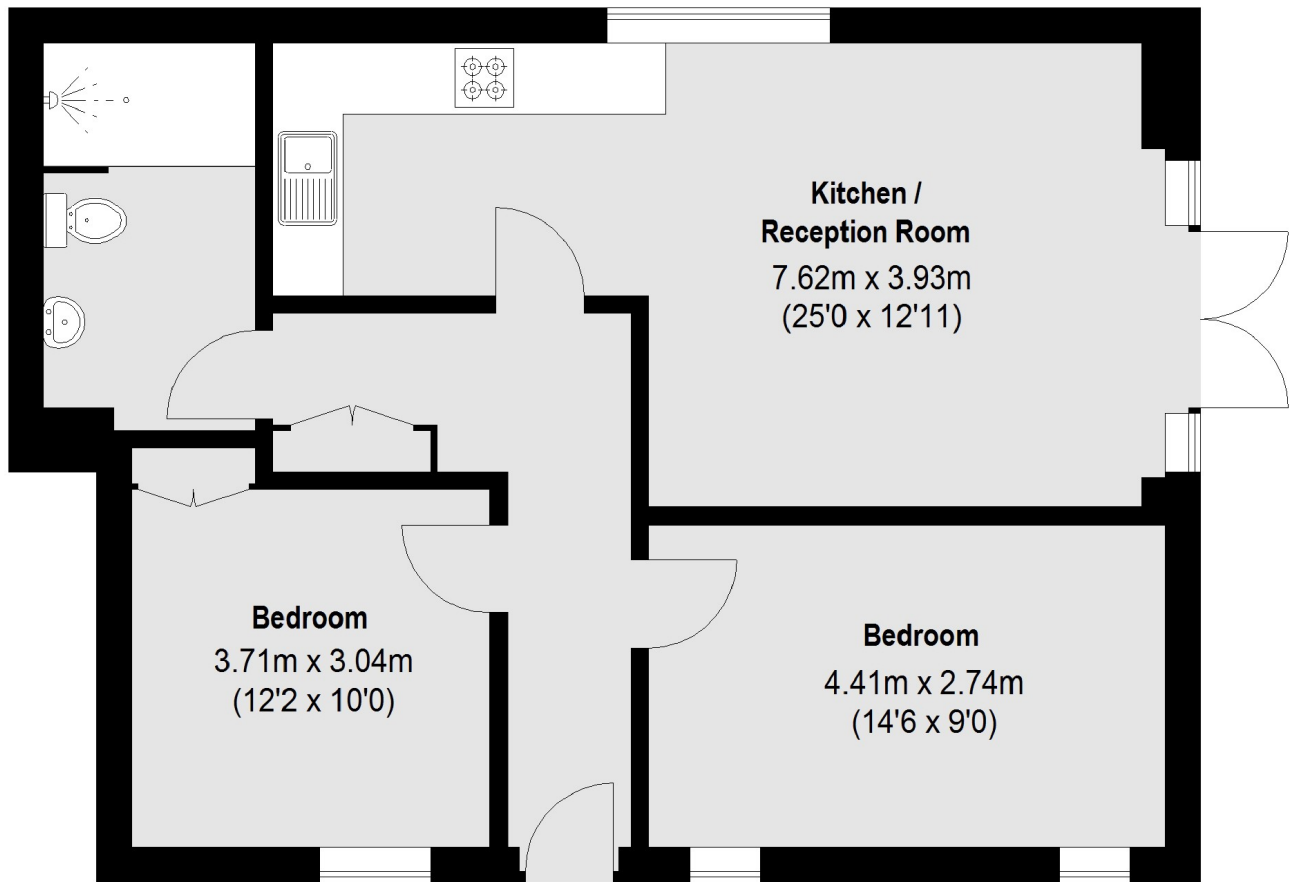
Currently under refurbishment is this brand new stunning ground floor flat comprising it's own entrance, an open plan kitchen/reception that leads to a private patio with street access, two double bedrooms and a modern bathroom with a walk-in shower.

Conveniently located for Crofton Park, Brockley and Ladywell train stations and the open spaces of Blythe Hill, Hilly Fields and Brockwell. The great independent cafés and shops of Crofton Park are located on your door step.

Features

- Brand New Development
- Ground Floor Flat
- Own Entrance
- Open-Plan Kitchen/Reception
- Private Patio
- Two Double Bedrooms

Brockley Road,
London, SE4



Total area (approx.): 63.25sq. m (681 Sq. ft)

Dexters

Ladywell
44 Ladywell Road
London
SE13 7UZ
Lettings
0208 690 8020

Energy Rating: . We aim to make our particulars both accurate and reliable. However they are not guaranteed; nor do they form part of an offer or contract. If you require clarification on any points then please contact us, especially if you're traveling some distance to view. Please note that appliances and heating systems have not been tested and therefore no warranties can be given as to their good working order.

 **RICS** | Regulated
Estate Agent
and Letting Agent

dexters.co.uk