



Roxley Road, SE13

£2,300 Per calendar month

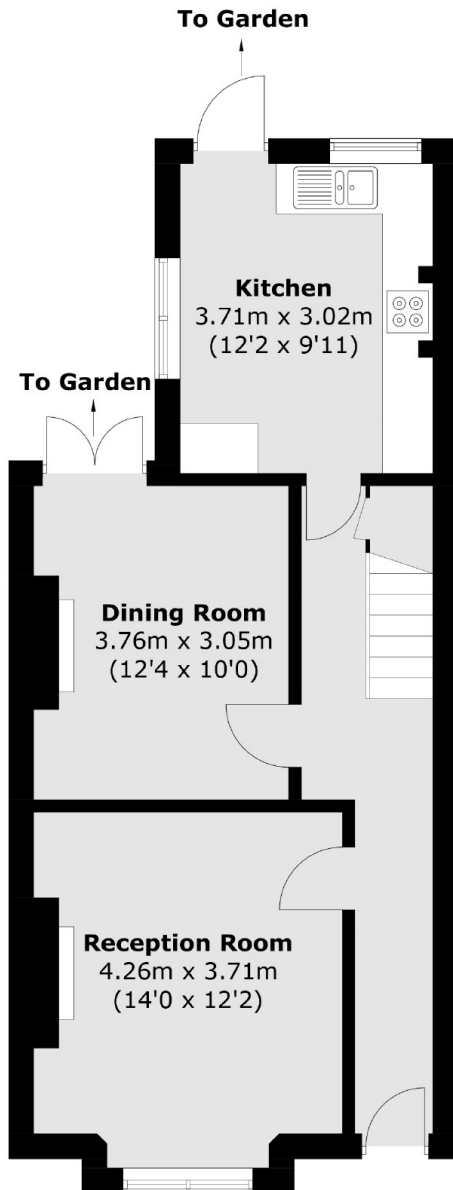
A two double bedroom family home situated close to Lewisham & Catford Railway station. Comprising a separate lounge and diner, spacious kitchen, two bedrooms and a family bathroom. There is also access to a rear private garden.

Lewisham DLR and mainline stations provide quick and easy access into Canary Wharf and central London respectively. For motorists there is on street permit parking.

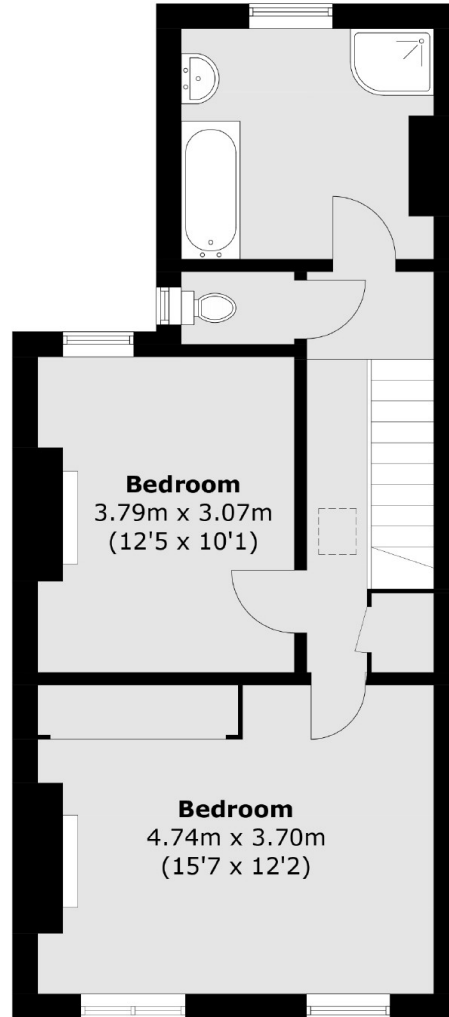
Features

- Family Home
- Terraced House
- Two Double Bedrooms
- Separate Lounge & Diner
- South Facing Garden
- Close To Lewisham Stations

Roxley Road,
London, SE13



Ground Floor



First Floor

Total area (approx.): 97.9 sq. m (1,053.8 sq. ft)