



Chalsey Road, SE4

£3,500 Per calendar month

Roy Brooks are proud to offer this spacious three bedroom split level apartment with a garden located on Chalsey Road, seconds away from Hilly Fields Park! Within easy walking distance to Brockley and Crofton Park BR.

Just a stones throw from Brockley Overground Station (10 minute walk), this place has the luxury of being on a quiet residential street, but also with great access to local restaurants, bars and parks.

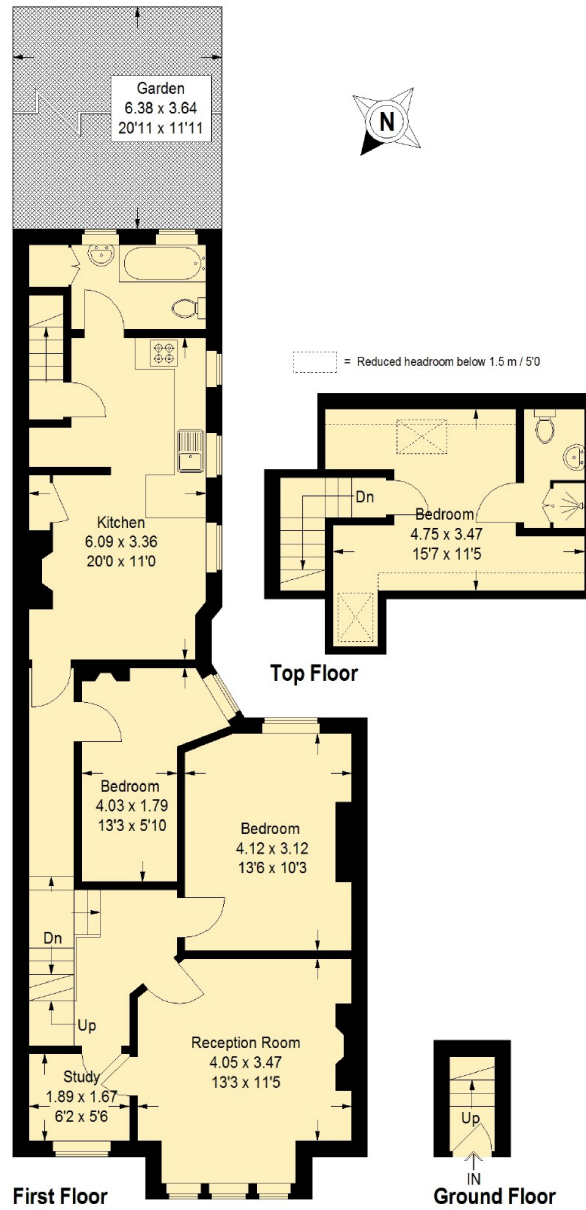
Features

- 3 Bedroom House
- Spacious
- Private Garden
- Brockley
- Close To BR Stations
- Plenty Of Storage

Chalsey Road, , SE4

Chalsey Road SE4

Approximate Gross Internal Area
Ground Floor = 1.5 sq m / 16 sq ft
First Floor = 80.0 sq m / 861 sq ft
Top Floor = 19.6 sq m / 211 sq ft
Total = 101.1 sq m / 1088 sq ft



This plan is for layout guidance only. Not drawn to scale unless stated.
Windows and door openings are approximate. Whilst every care is taken
in the preparation of this plan, please check all dimensions, shapes and
compass bearings before making any decisions reliant upon them. (ID781750)