



Theodore Road, SE13

£2,200 Per calendar month

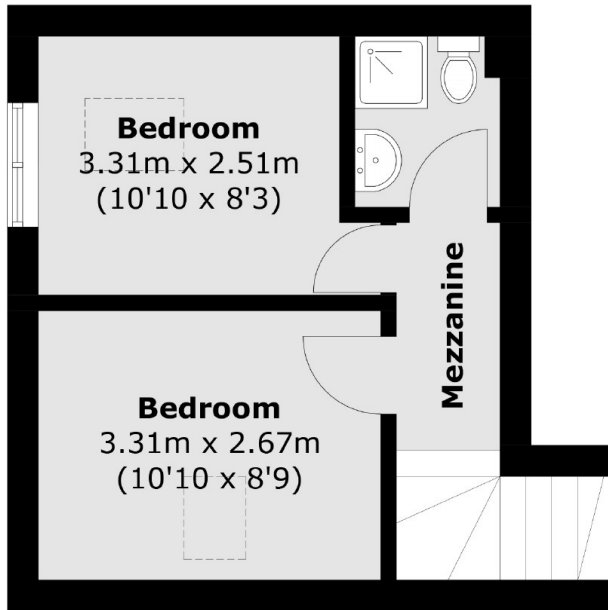
A marvellous house in a secure private development just off of Lee High Road. Pied a Terre consists of two double bedrooms, two bathrooms and a large private garden. The house also boasts off-street parking.

Theodore Road is located 0.3 miles from Hither Green Station and 0.8 Miles from Ladywell Station with regular trains into the city.

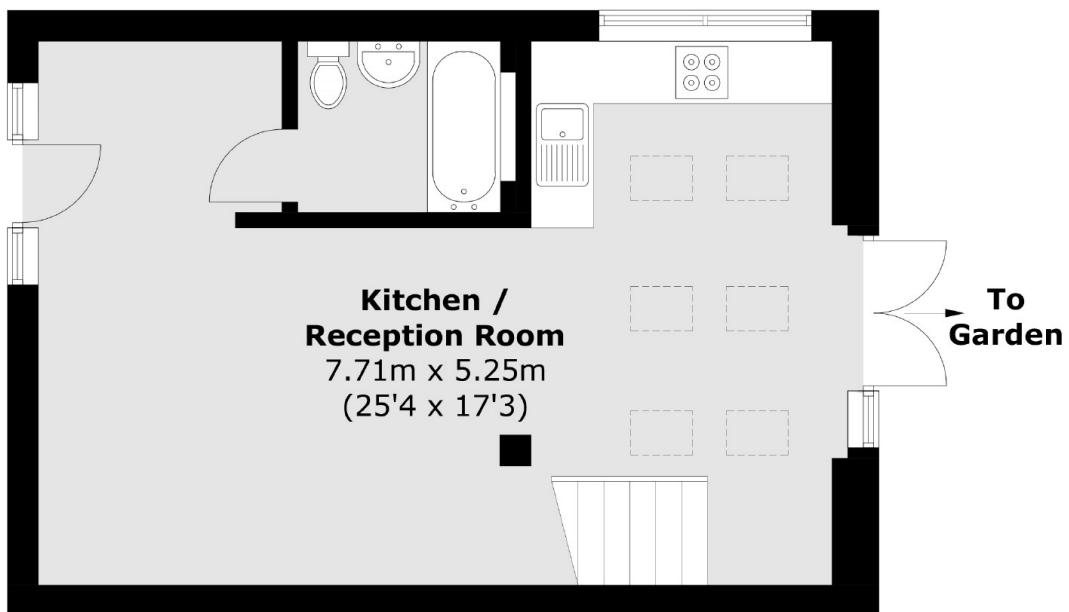
Features

- Gated Development
- A Modern House
- Two Bedrooms
- Two Bathrooms
- Private Garden
- Off-Street Parking

Theodore Road,
London, SE13



First Floor



Ground Floor

Total area (approx.): 65.0 sq. m (699.7 sq. ft)