



Algernon Road, SE13

£3,000 Per calendar month

Available to a family, this fantastic four bedroom period house with the bonus of a self-contained flat. Presented in good order throughout, the property is neutrally decorated, has wooden flooring, two modern kitchens, two bathrooms, double glazing and central heating throughout.

The property is located midway between Lewisham and Algernon from where there are great transport links to all parts of London. Mainline services take you straight into Charing Cross or Cannon St in around 20 mins while the DLR is ideal for anyone working in Canary Wharf. For anyone needing the London Overground, you can pick this up from Brockley station.

Features

- Four Double Bedrooms
- Self-Contained Flat
- Double Reception Room
- Two Bathrooms Plus A Separate Downstairs WC
- Private Garden
- Close To Transport Links



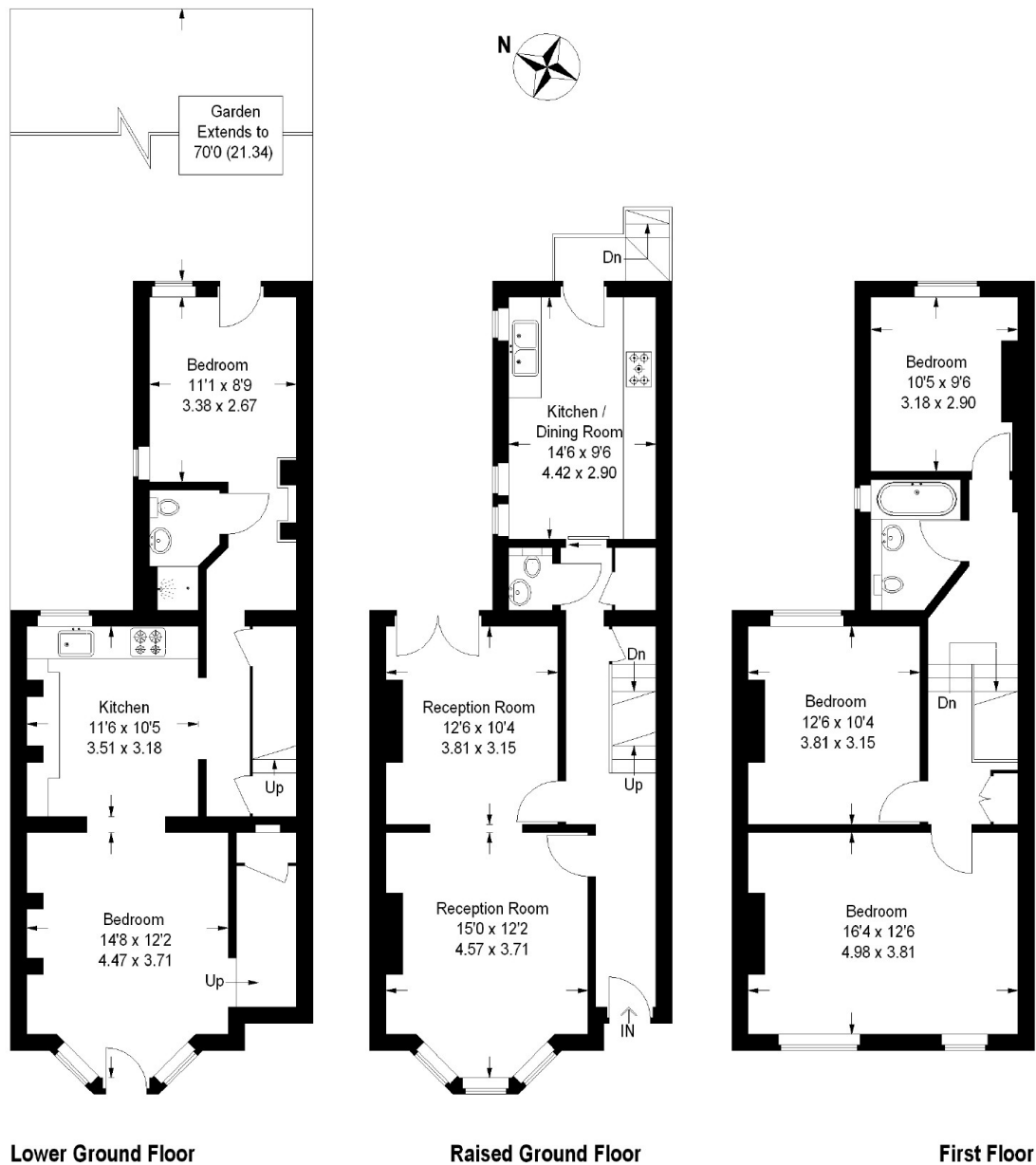
Algernon Road, SE13

Arranged over three floors, the lower ground floor could be used as a self-contained flat as it has its own front door, open-plan kitchen, shower room and bedroom. On the hall floor level is a walk-through reception room, a cloakroom, and a superb kitchen-diner. On the top floor are 3 double bedrooms and a smart family bathroom. The garden can be accessed from either the lower ground floor or from the kitchen-diner on the floor above.



Algernon Road, London, SE13

Algernon Road



Approximate Gross Internal Area = 162.9 sq m / 1753 sq ft

Illustration for identification purposes only,
measurements are approximate.

Drawn for Sebastian Roche .