



Cumberland Place, SE6

£1,300 Per calendar month

A one bedroom modern apartment with the added benefit of off street parking.

Inverness Court is located 1 mile from Hither Green station which has regular services into London and the City.

Features

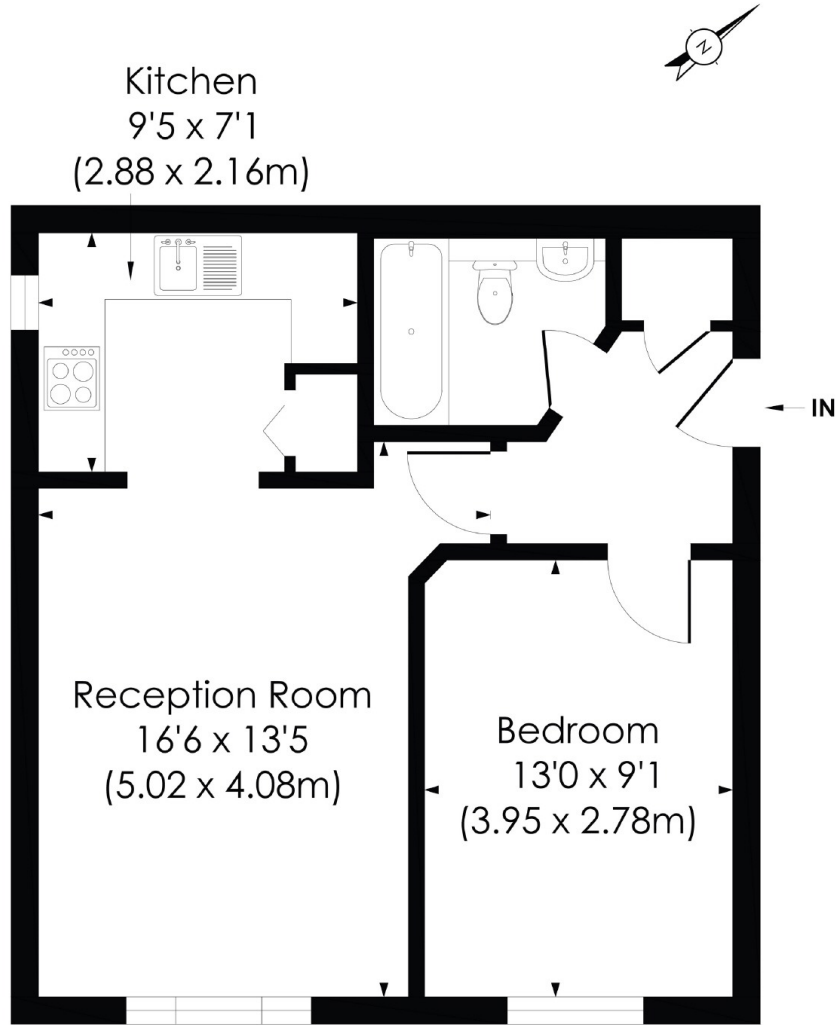
- One Bedroom
- Modern Apartment
- Reception Room
- Kitchen
- Bathroom
- Off Street Parking

Cumberland Place, London, SE6

CUMBERLAND PLACE, SE6

Approx. Gross Internal Floor Area

466 Sq. ft/43.26 Sq. m



FIRST FLOOR

© Pixangle Property Marketing Ltd. info@pixangle.com Tel: 0208 870 2118

pixangle
PROPERTY MARKETING

This floor plan has been prepared for the purpose of illustration only in accordance with the latest RICS code of measuring practice and is not to scale. All measurements and areas are approximate and whilst every effort has been made to ensure the accuracy of the plan contained here, no responsibility is taken for any error, omission or misstatement.

Dexters

Lewisham
228 Algernon Road
London
SE13 7AG

Lettings
0208 690 8020

Energy Rating: B. We aim to make our particulars both accurate and reliable. However they are not guaranteed; nor do they form part of an offer or contract. If you require clarification on any points then please contact us, especially if you're traveling some distance to view. Please note that appliances and heating systems have not been tested and therefore no warranties can be given as to their good working order.

 **RICS** | Regulated
Estate Agent
and Letting Agent

dexters.co.uk