



Chudleigh Road, SE4

£2,300 Per calendar month

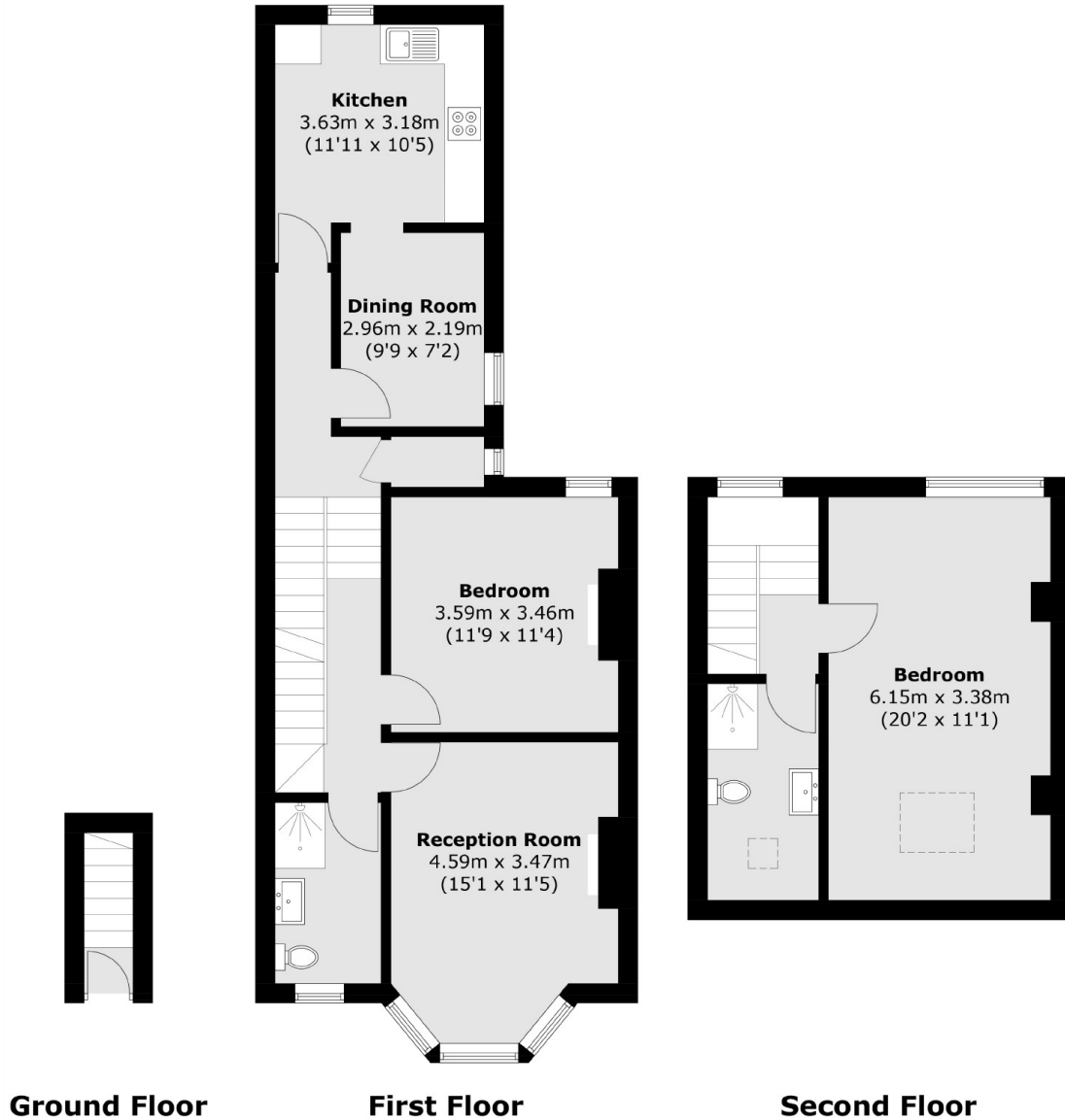
Well presented two double bedroom split level period conversion, situated in the heart of Ladywell, an ideal home for professional couples and sharers alike.

Chudleigh Road is perfectly positioned for Crofton Park and Ladywell stations, the open spaces of Hilly Fields and Blythe Hill as well as the ever popular Gordonbrock Primary School. There are numerous cafes, restaurants and bars all within a short walk.

Features

- First Floor Flat
- Split Level Period Conversion
- Immaculate Decor
- Two Bedrooms
- Two Bathrooms
- Close To Station

Chudleigh Road,
London, SE4



Total area (approx.): 97.3 sq. m (1,047.3 sq. ft)