



## Morley Road, SE13

£4,200 Per calendar month

A five double bedroom house located in central Lewisham and ideal for professionals. Comprising five double bedrooms, two bathrooms, a reception room, kitchen breakfast room and a large garden this house is would be perfect for five professionals.

Morley Road is located less than half a mile to both Lewisham and Ladywell stations which have regular services into Central London. Lewisham High Street has a range of shops, bars and restaurants that are also close by.

### Features

- Five Double Bedrooms
- Two Bathrooms
- Large Living room
- Eat-In Kitchen
- West Facing Garden

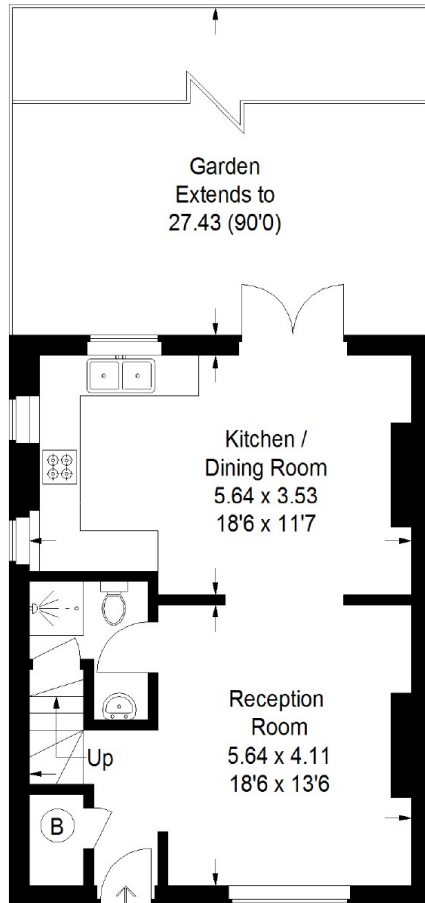




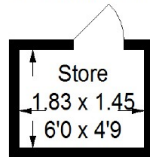
Morley Road, SE13



# Morley Road, London, SE13



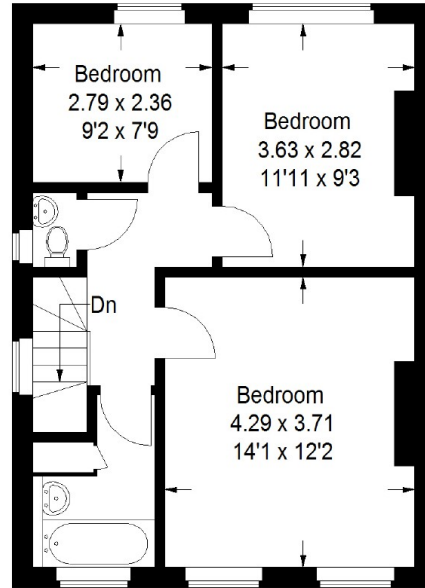
**Lower Ground Floor**



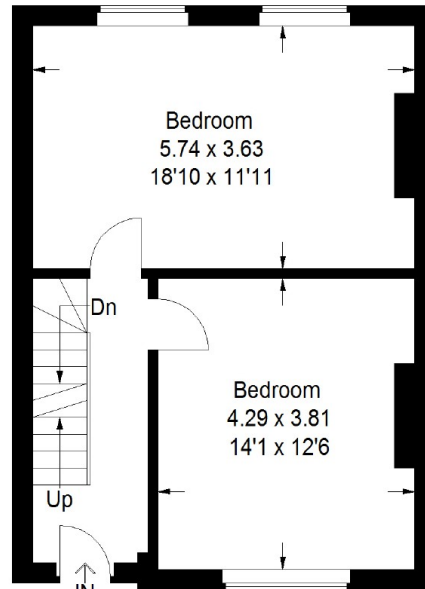
(Not Shown In Actual Location / Orientation)

Approximate Gross Internal Area (Including Store)  
1491 sq ft / 138.5 sq m

Illustration for identification purposes only,  
measurements are approximate.  
Drawn for Sebastian Roche.



**First Floor**



**Raised Ground Floor**