



Foxborough Gardens, SE4

£2,500 Per calendar month

Tucked away in a cul-de-sac, is this beautifully presented three bedroom family home.

On the ground floor as you enter the house to the right has a good size reception room with feature fire place and a downstairs W.C. Down the hall is the large kitchen/diner with integrated appliances that leads to a private garden and separate utility room.

Upstairs are three double bedrooms and the modern family bathroom with a shower over the bath. The property boasts well maintained garden spaces and wood floors throughout.

Foxborough Gardens is located conveniently for Crofton Park, Catford Bridge and Ladywell stations which all have regular services into central London.

Features

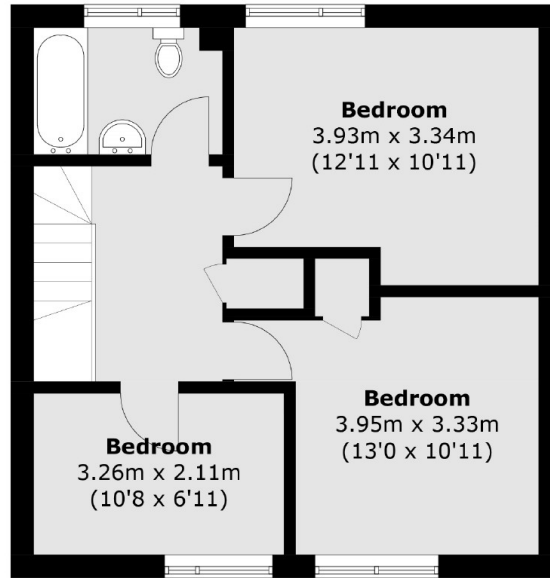
Family Home
Well Presented
Three Double Bedrooms
Modern Family Bathroom
Wood Floors Throughout
Private Garden



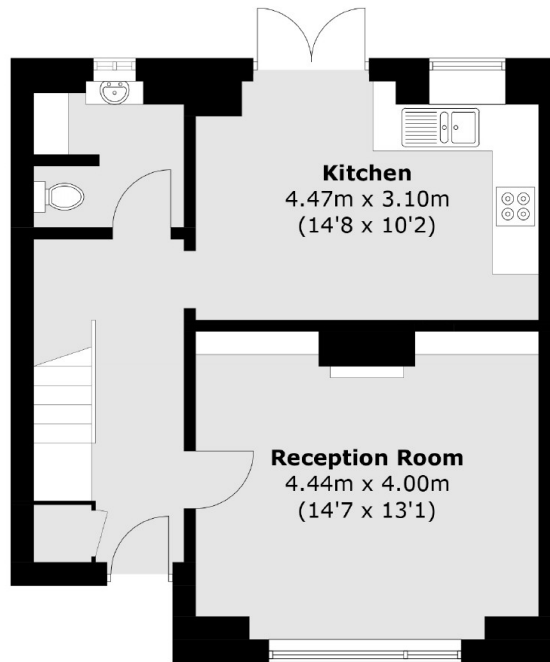
Foxborough Gardens, SE4



Foxborough Gardens,
London, SE4



First Floor



Ground Floor

Total area (approx.): 90.6 sq. m (975.2 sq. ft)