



Bradgate Road, SE6

£2,100 Per calendar month

A beautifully presented two bedroom house comprising a large reception/dining room that leads to a private garden and a separate fitted kitchen. The first floor comprises of two double bedrooms and a modern bathroom.

Bradgate Road is a quiet, residential street located close to Ladywell Fields. You have a choice of stations either Ladywell, Catford or Catford Bridge, all of which are within walking distance. There is no shortage of amenities to be found locally in Catford, Ladywell and Lewisham.

Features

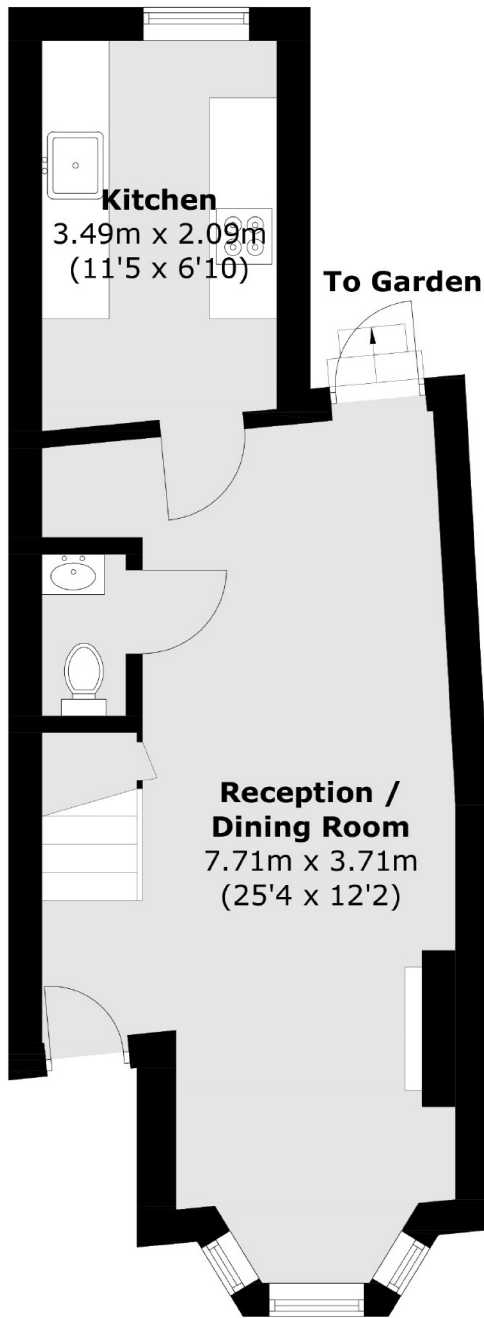
- Victorian House
- Two Double Bedrooms
- Large Living Space
- Modern Features
- Private Rear Garden
- Part-Furnished



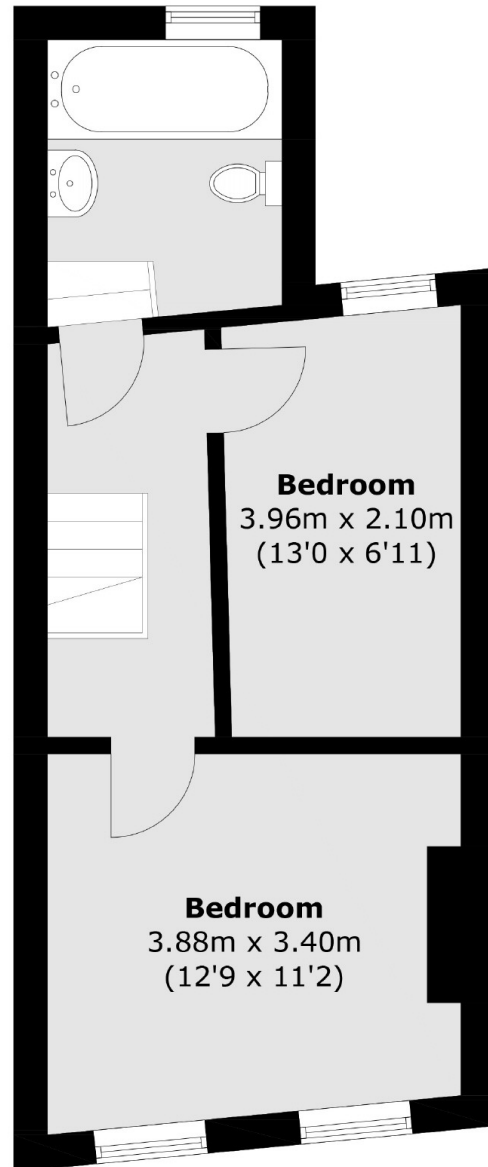
Bradgate Road, SE6



Bradgate Road,
London, SE6



Ground Floor



First Floor

Total area (approx.): 63.9 sq. m (687.8 sq. ft)