









A rare introduction to the market, this extended four bedroom, two bathroom and three reception roomed semi detached home offers well proportioned living accommodation ideal for those space hungry families.

Decorated to a very good standard throughout, the property internally comprises entrance porch with walk in cloaks cupboard, reception hall, lounge, open plan kitchen and dining room, living room, three double size bedrooms at first floor level together with a fourth single size bedroom, en-suite shower room and family bathroom. Benefiting from gas central heating, UPVC double glazing and featuring a floored loft, the property externally sits within corner plot and has attractive gardens to the front, side and rear together with a single drive and larger than average garage with remote control electric doors.

Conveniently positioned on this sought after avenue just a short stroll from Fulwell's superb amenities including good schools, Seaburn Metro station and is also within easy walking distance of the sea front and its award winning Blue Flag beaches. Something quite special this home must be viewed as a matter of urgency as considerable interest is anticipated!

MAIN ROOMS AND DIMENSIONS

Ground Floor

UPVC double glazed French doors to entrance porch.

Entrance Porch

Wood effect laminate flooring, large walk in cloaks cupboard with UPVC double glazed window, heated towel rail, fitted shelving and hanging space for coats etc.

Reception Hall

Spindle balustrade staircase, single radiator, under stairs storage cupboard.

Lounge 11'8" x 14'7" max dimensions into alcoves



UPVC double glazed French window to front elevation, living flame gas fire with feature surround insert and hearth, single radiator, coved cornicing to ceiling, wall lights and double sliding doors through to the kitchen.

Kitchen 9'8" x 18'1" maximum dimensions



Good selection of base and eye level units with solid oak working surfaces and upstands incorporating a 1 1/2 bowl sink and drainer sink unit with pedestal mixer tap. Integrated appliances include a gas hob with tempered glass splashback and overhead extractor hood, double electric oven, whilst space and plumbing is also provided for a washing machine and dishwasher. Space for fridge freezer, solid oak flooring, UPVC double glazed window to the rear elevation, and double radiator. Open plan to the dining room.

Dining Room 8'8" x 10'0"



UPVC double glazed window to rear elevation, solid oak flooring, corner cupboard with solid oak countertop, and coved cornicing to ceiling. Open plan to the living room.

Living Room 14'0" x 22'11" maximum dimensions



Twin UPVC double glazed oriel bay windows to side elevation overlooking gardens, solid oak flooring, double radiator and wall preparation for flat screen TV, wall lights and a built in cupboard housing the wall mounted gas combination boiler serving hot water and radiators.

First Floor Landing

Access point to floored loft via folding timber ladders.

Bedroom 1 12'10" x 12'5"



Maximum dimensions into fitted wardrobes, fitted drawers and bedside cabinets, UPVC double glazed window to side elevation and double radiator.

Visit www.peterheron.co.uk or call 0191 510 3323

Tried. Trusted. Recommended. City Branch 20 Fawcett Street Sunderland SR1 1RH Fulwell Branch 15 Sea Road Fulwell Sunderland SR6 9BS

MAIN ROOMS AND DIMENSIONS

En Suite Shower Room



Low level WC, pedestal washbasin and corner shower cubicle - white suite with part tiled walls, wood effect laminate flooring, UPVC double glazed window, single radiator and ceiling mounted extractor unit.

Bedroom 2 (front) 14'5" x 10'3"



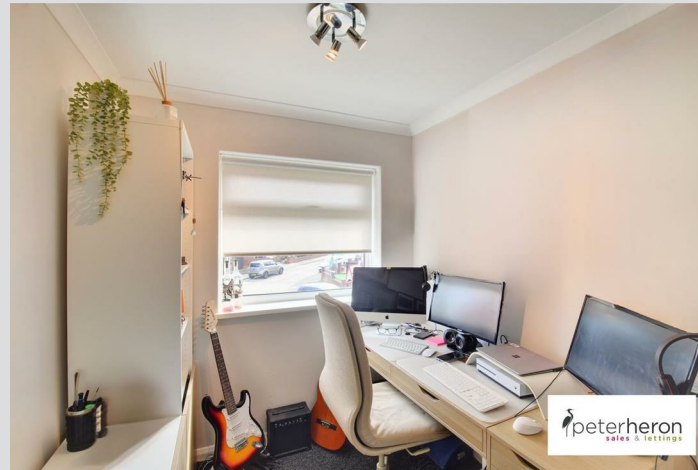
Maximum dimensions into fitted wardrobes, UPVC double glazed bay window to front elevation, fitted shelving, single radiator and coved cornice to the ceiling.

Bedroom 3 (rear) 10'2" x 10'3"



UPVC double glazed window to rear elevation, single radiator and coved cornice to ceiling.

Bedroom 4 (front) 9'1" x 6'9"



UPVC double glazed window to front elevation, single radiator and bulk head cupboards.

Bathroom



Low level WC with concealed cistern, washbasin vanity unit with drawers under and pedestal mixer tap, panel bath with overhead rainfall shower and glass screen - attractive white suite with stone effect UPVC cladding to walls and ceiling, tiled effect flooring, UPVC double glazed window ceiling mounted extractor and heated towel rail.

Outside



Gardens to the front, side with pattern concrete paths winding through and leading to a single garage accessed via double wrought iron gates, remote control electric roller shutter door. Enclosed rear gardens with a concrete pattern patio seating area, second patio seating area together with raised lawns.

Garage 14'5" x 9'3"

Storage space in roof void, single door to rear elevation providing access into enclosed rear gardens.

Council Tax Band

The Council Tax Band is Band C.

Visit www.peterheron.co.uk or call 0191 510 3323

Tried. Trusted. Recommended. City Branch 20 Fawcett Street Sunderland SR1 1RH Fulwell Branch 15 Sea Road Fulwell Sunderland SR6 9BS

MAIN ROOMS AND DIMENSIONS

Tenure Freehold

We are advised by the Vendors that the property is Freehold. Any prospective purchaser should clarify this with their Solicitor.

Important Notice

Peter Heron Ltd for themselves and for the vendors of this property whose agents they are, give notice that:- The particulars are set out for general guidance only for the intending Purchasers and do not constitute part of an offer or contract. Whilst we endeavour to make our sales particulars accurate and reliable, if there is anything of particular importance which you feel may influence your decision to purchase, please contact the office and we will be pleased to check the information. Do so particularly, if contemplating travelling some distance to view the property. All descriptions, dimensions, references to conditions and necessary permissions for use and occupation and other details are given in good faith, and are believed to be correct, however any intending purchasers should not rely on them that statements are representations of fact, but must satisfy themselves by inspection or otherwise as to the correctness of each of them. Independent property size verification is recommended.

Lease details, service charges and ground rent (where applicable) are given as a guide only and should be checked and confirmed by your Solicitor prior to exchange of contracts. No person in the employment of Peter Heron Ltd has any authority to make or give any representation or warranty whatever in relation to this property or these particulars, nor to enter into any contract on behalf of Peter Heron Ltd, nor into any contract on behalf of the Vendor. The copyright of all details and photographs remain exclusive to Peter Heron Ltd.

Please note that in the event the purchaser uses the services of Peter Heron Conveyancing in the purchase of their home, Peter Heron Ltd will be paid a completion commission of £210.00 by Movewithus Ltd.

Sea Road Viewings

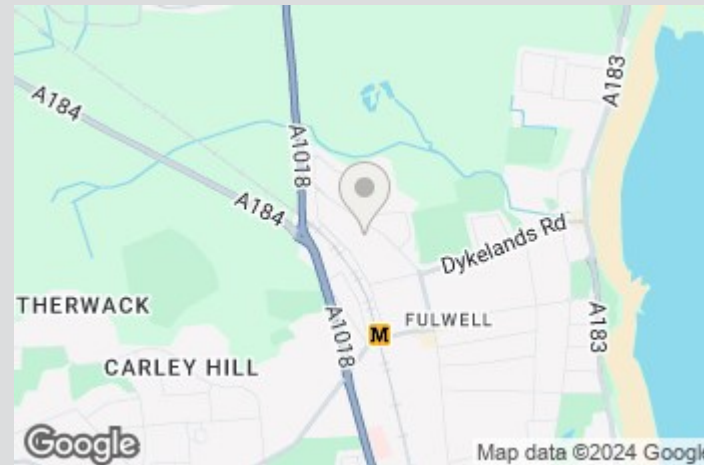
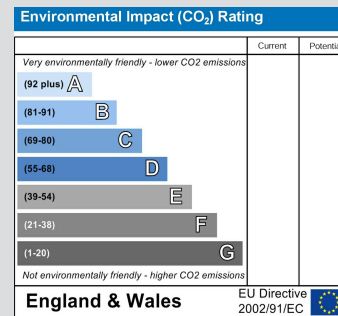
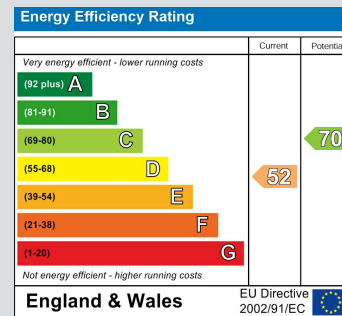
To arrange an appointment to view this property please contact our Sea Road branch on 0191 510 6116 or book viewing online at peterheron.co.uk

Opening Times

Monday to Friday 9.00am - 5.00pm Saturday 9.00am - 12noon

Ombudsman

Peter Heron Estate Agents are members of The Property Ombudsman and subscribe to The Property Ombudsman Code of Practice.



Visit www.peterheron.co.uk or call 0191 510 3323

Tried. Trusted. Recommended. City Branch 20 Fawcett Street Sunderland SR1 1RH Fulwell Branch 15 Sea Road Fulwell Sunderland SR6 9BS



Ground Floor
Approximate Floor Area
(75.80 sq.m)



First Floor
Approximate Floor Area
(62.70 sq.m)

77 Kentmere Avenue